

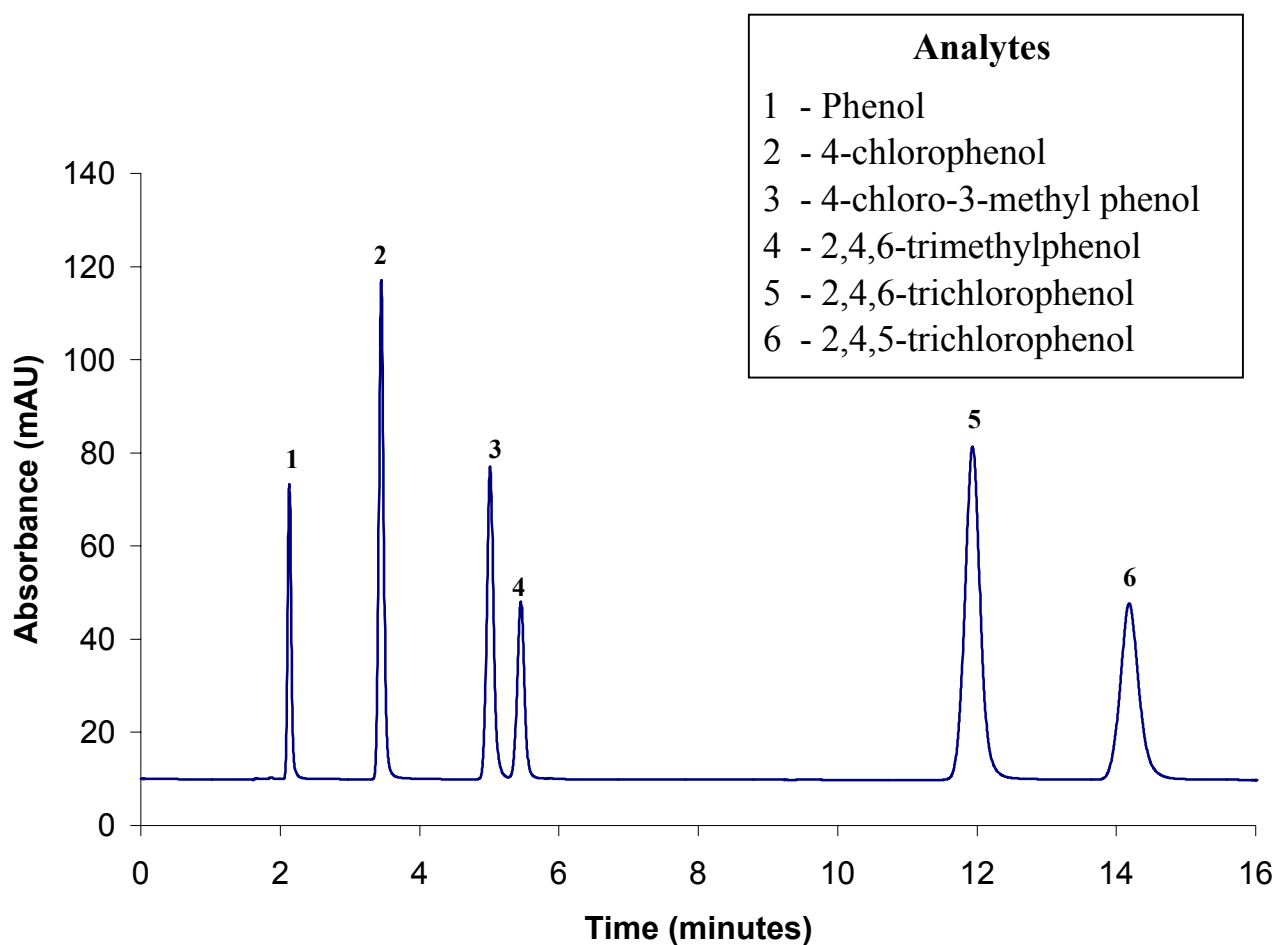


ZirChrom®

Technical Bulletin #131

... For Peak Performance

Chlorophenols Separation on ZirChrom®-PBD



LC Conditions

Column: ZirChrom®-PBD, 150 mm × 4.6 mm i.d.

Mobile Phase: 25/75 A/B

A: Acetonitrile

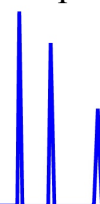
B: 20mM ammonium acetate and 20 mM sodium fluoride, pH 4.10

Flow rate: 1.0 mL/min.

Temperature: 30 °C

Detection: 280 nm

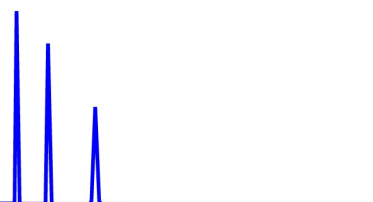
Pressure Drop: 141 bar





ZirChrom®

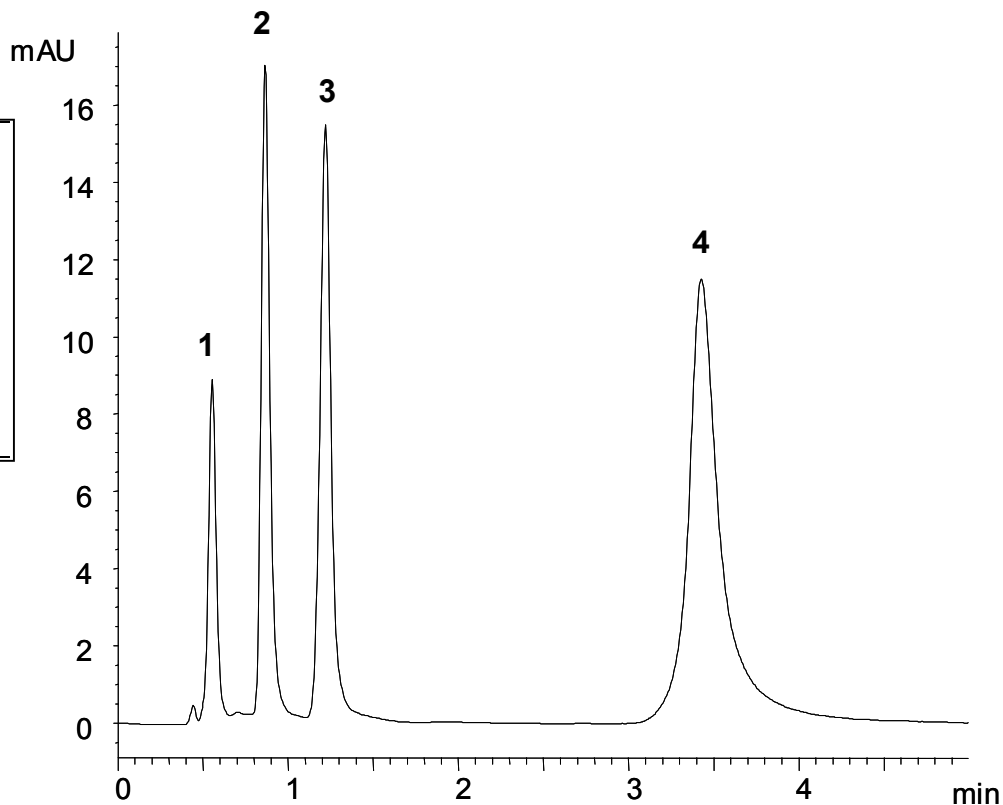
Technical
Bulletin #256



... For Peak Performance

Phenols Separation on Nonporous ZirChrom®-PBD

Analytes
1 - Phenol
2 - 4-chlorophenol
3 - 4-chloro-3-methyl phenol
4 - 2,4,6-trichlorophenol



LC Conditions

Column: Nonporous ZirChrom®-PBD, 50 x 4.6 mm i.d.

Mobile Phase: 25/75 A/B

A: ACN

B: Water

Flow rate:

1.0 mL/min.

Temperature:

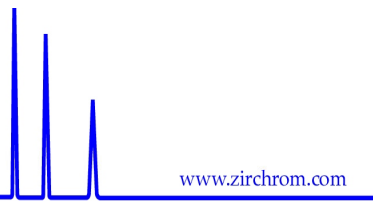
30 °C

Injection volume:

1 µL

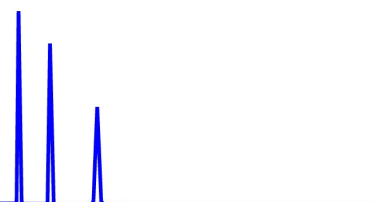
Detection:

254 nm



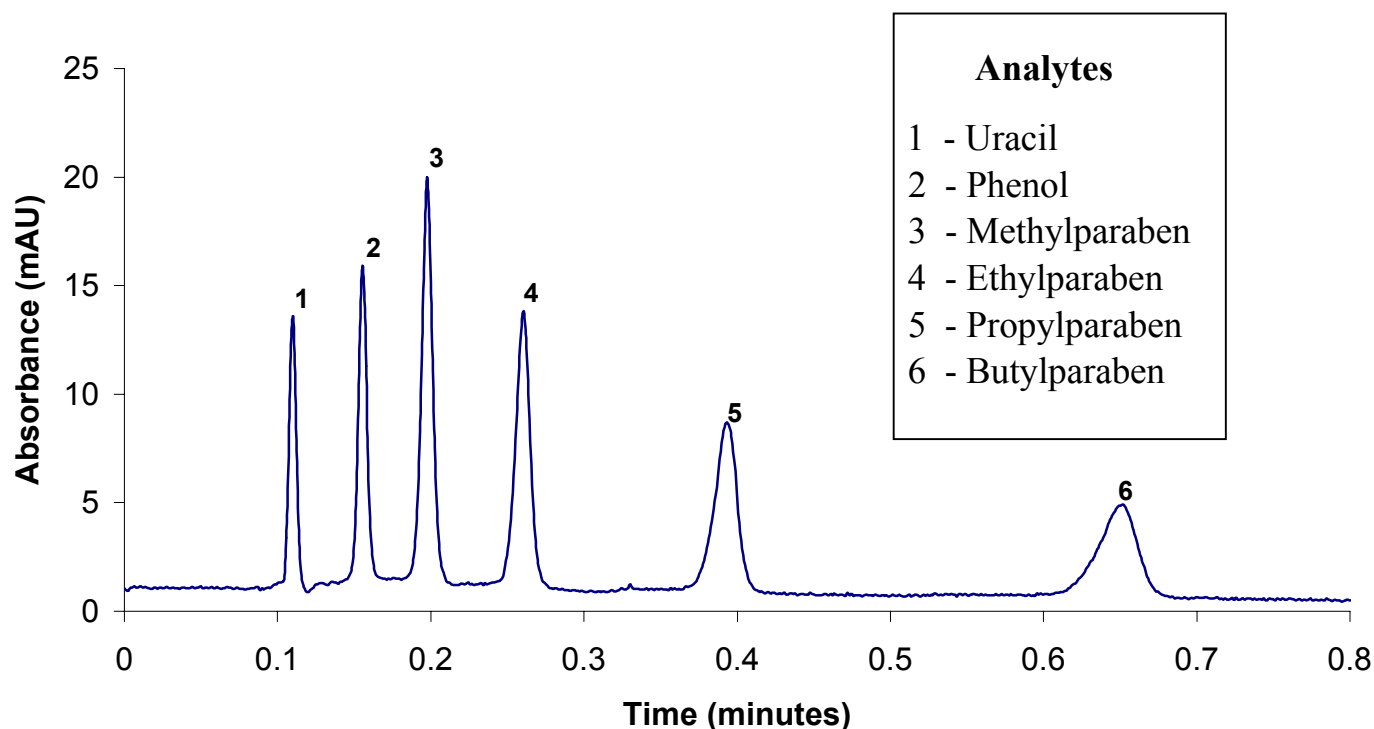


ZirChrom®

 Technical
 Bulletin #235


... For Peak Performance

Parabens and Phenols Separation at 150 °C on Diamondbond™-C18



LC Conditions

 Column: **DIAMOND BOND™**-C18, 50 mm × 4.6 mm i.d.

Mobile Phase: 20/80 A/B

A: ACN

B: 20 mM phosphoric acid, pH 2.3

Flow rate: 5.5 mL/min.

Temperature: 150 °C

Injection volume: 1 µL

Detection: 254 nm

