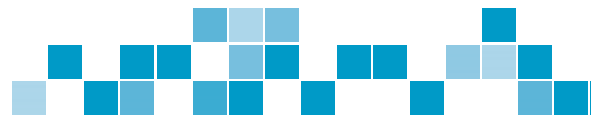




# AquaRo<sup>2</sup> & EDI<sup>2</sup>

INNOVATIVE LABWATER SYSTEMS



The new pure water systems **AquaRo<sup>2</sup>**, **AquaRo<sup>2</sup> DI** and **EDI<sup>2</sup>** are reliable and compact systems which produce up to ASTM Type II grade water from 120 to 960 liter a day. All systems ensure high comfort at low operating costs.

The systems are equipped with a pretreatment of activated carbon and softening components. **AquaRo<sup>2</sup>** systems are equipped with a reverse osmosis (RO), **AquaRo<sup>2</sup> DI** with an additional mixed bed cartridge and **EDI<sup>2</sup>** with an additional electro deionization (EDI) cell to produce de-ionized water of Type II. The systems have a 10 l, 35 l, 70 l or an individual sized storage reservoir which are filled with a production rate of 5-40 l/h. The de-ionized water can be dispensed from the reservoir or optionally with a fixed and flexible dispenser. An UV lamp can be integrated optionally.

The new **AquaRo<sup>2</sup>** and **EDI<sup>2</sup>** models enable remote diagnosis. This Remote Check offers you the opportunity to save time and money by fast and reliable support through the service team.

# RANGE OF STANDARD SYSTEMS

This product guide shows the range of our labwater systems and will help to select the best system for your needs.

## Advantages of the new systems

- Compact housing
- Big touchscreen
- Remote Service module and self diagnosis
- interactive software
- traceable water quality values



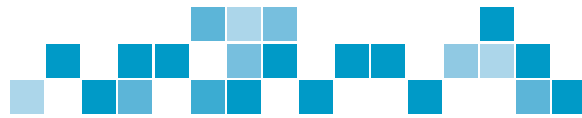
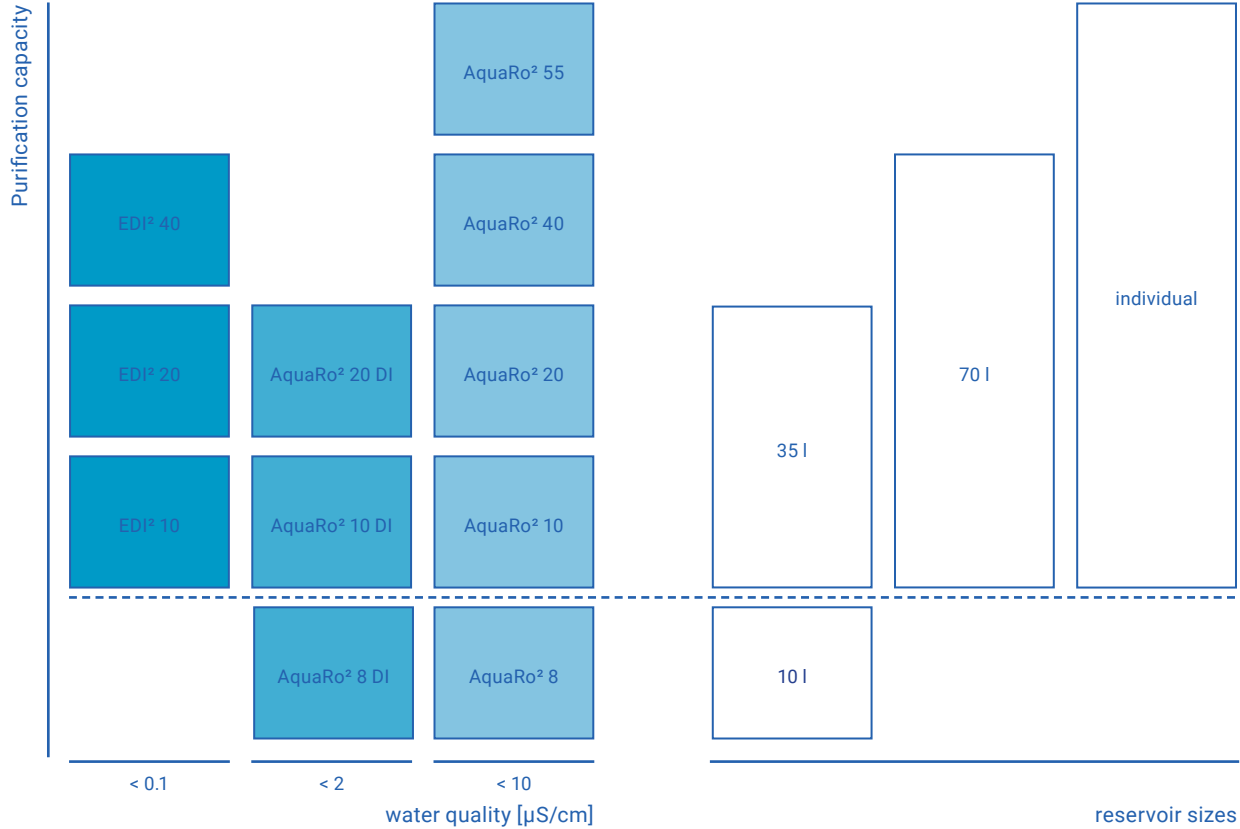
## Typical specifications

	EDI²	AquaRo² DI	AquaRo²
Conductivity	< 0.1 $\mu\text{S}/\text{cm}$	< 2 $\mu\text{S}/\text{cm}^1$	< 10 $\mu\text{S}/\text{cm}^1$
TOC	< 20 ppb	< 50 ppb	< 50 ppb
Germ	< 10 KBE/ml	< 50 KBE/ml	< 50 KBE/ml

<sup>1</sup> depends on inlet water quality







# OPTIONS

## TOC monitoring

(only for EDI<sup>2</sup>)

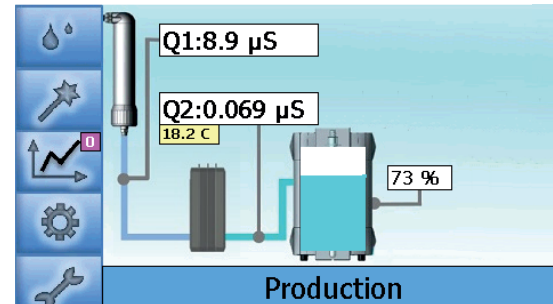
The TOC monitoring during production and intermittent measurements during non-use periods allows to check the organics in water continuously. The TOC value is measured between 1 and 999 ppb and can be shown in the display to monitor organic impurities.

## UV lamp

For sensitive applications the systems can be equipped with an UV lamp.

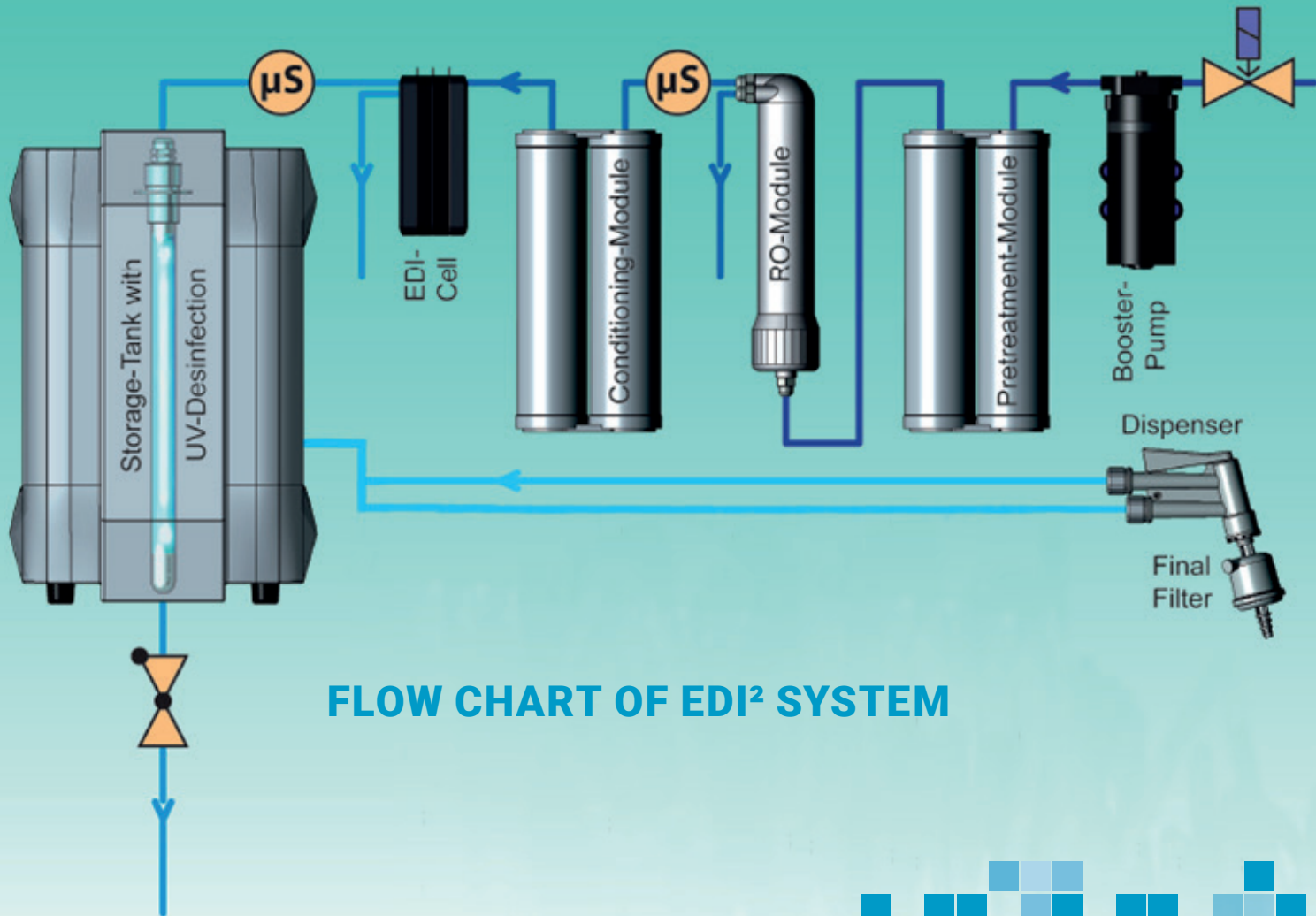
## memTap

Our new automatic memTap allows the volumetric controlled tapping of water with a dispenser arm. The arm can be moved horizontally and vertically. Preset of tap-volume is in 0.1 l steps. This system prevents overflow of containers and allows to tap water without supervising. The 3.5" display with touch screen offers you all relevant data at a glance.



main screen





**FLOW CHART OF EDI<sup>2</sup> SYSTEM**

