

Conditions:

Injection: Split 250°C, 0.5µL, 1:50 Split Ratio.

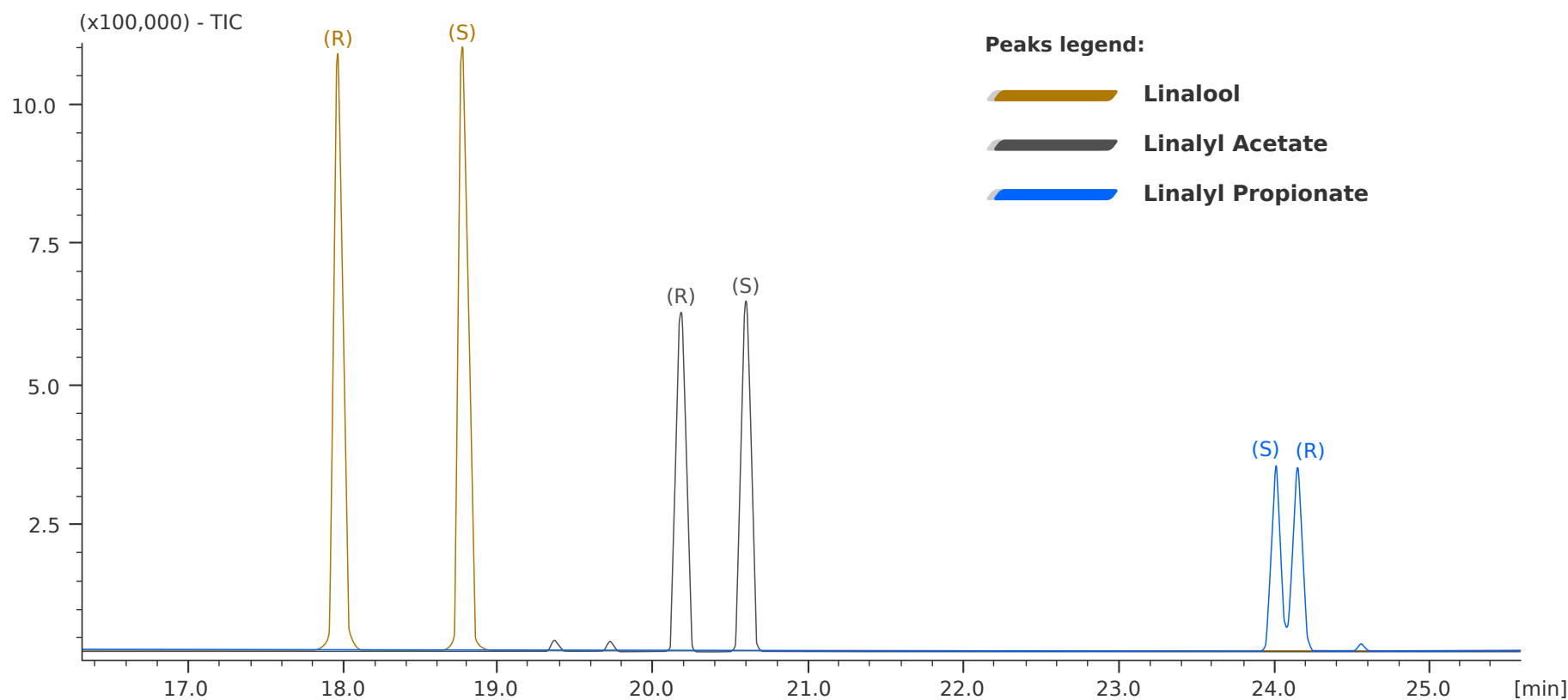
Sample dilution: 1mg/1mL each in n-Hexane.

Contact us for additional information.

**Linalool, Linalyl Acetate and
Linalyl Propionate**
Chiral Separation on MEGA-DEX Columns

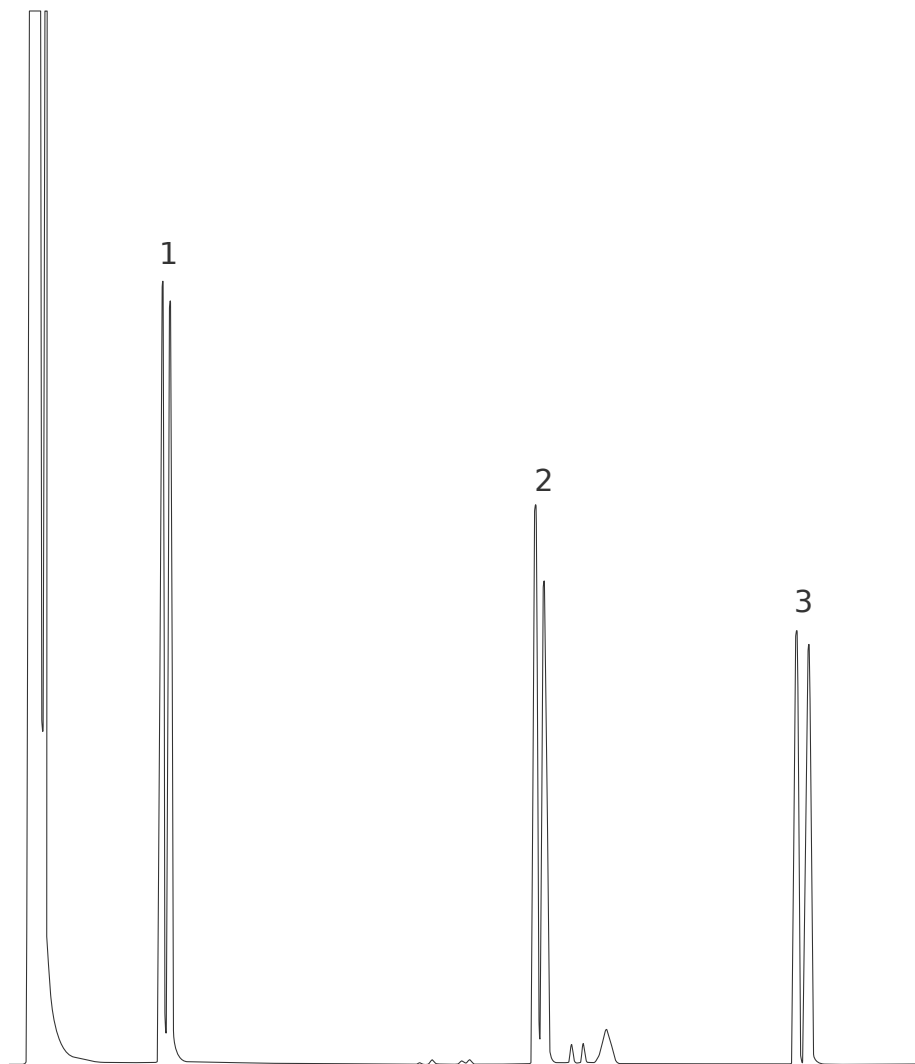
Column: **MEGA-DEX DET Beta - 0.25mm, 0.25µm, 25m**

Catalog Code: DEX-DET-B-025-025-25



Acknowledgement: Prof. C.Bicchi, C.Cordero et al. - Università di Torino, Dipartimento di Scienza e Tecnologia del Farmaco, Via Pietro Giuria, 9 - Torino - Italy.





Alpha-Pinene, Linalool, Menthol (+/-) Chiral Separation on MEGA-DEX Columns

Column: **MEGA-DEX DET Beta - 0.25mm, 0.25 μ m, 25m**

Catalog Code: DEX-DET-B-025-025-25

Conditions:

Injection: Split 250°C, 0.5 μ L, 1:50 Split Ratio.

Sample dilution: 1mg/1mL each in n-Hexane.

Oven Temp.: 75°C, 1°C/min, 160°C.

Detector: FID 250°C.

Carrier Gas: Hydrogen, 75 kPa.

Peaks:

1. (+/-) Alpha-Pinene
2. (+/-) Linalool
3. (+/-) Menthol



Conditions:

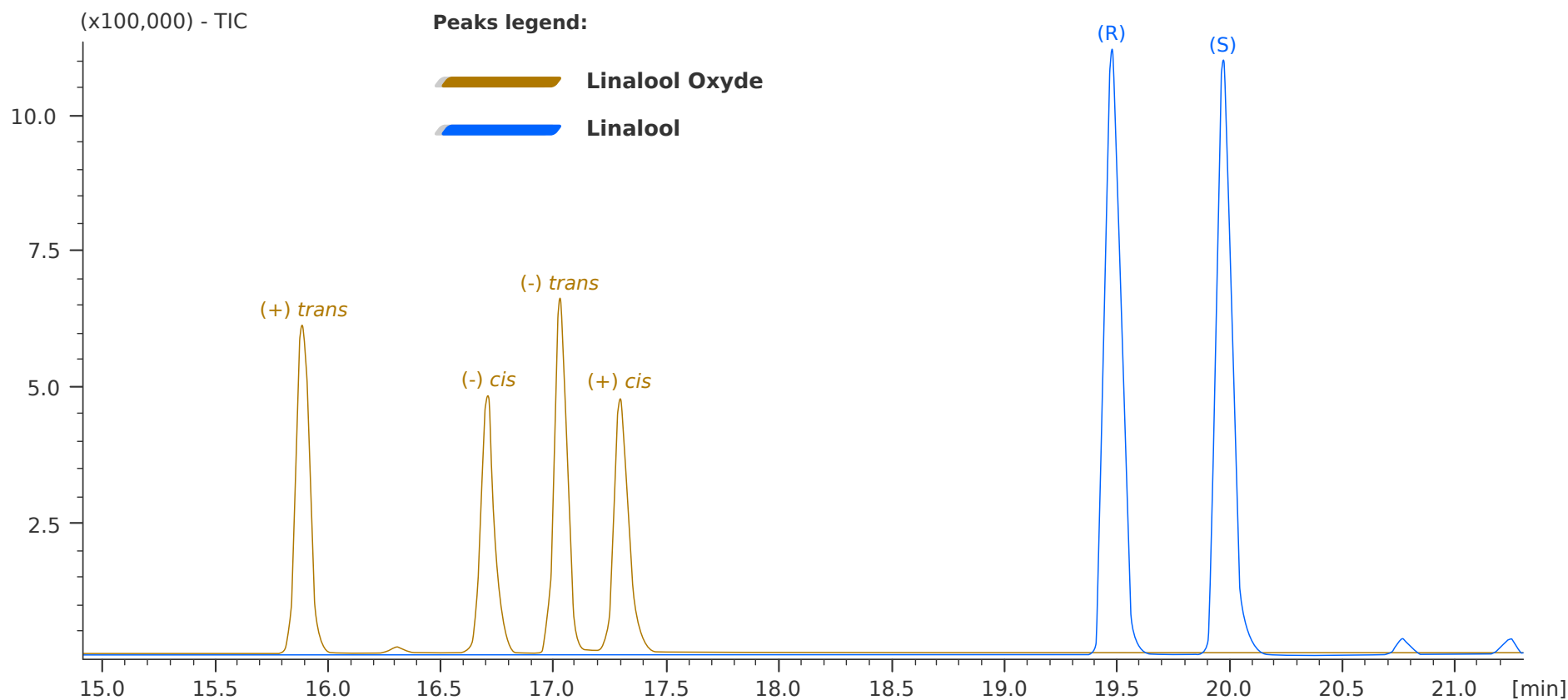
Injection: Split 250°C, 0.5µL, 1:50 Split Ratio.

Sample dilution: 1mg/1mL each in n-Hexane.

Contact us for additional information.

Linalool, Linalool Oxyde
Chiral Separation on MEGA-DEX Columns

Column: **MEGA-DEX DMT Beta - 0.25mm, 0.25µm, 25m**
Catalog Code: DEX-DMT-B-025-025-25



Acknowledgement: Prof. C.Bicchi, C.Cordero et al. - Università di Torino, Dipartimento di Scienza e Tecnologia del Farmaco, Via Pietro Giuria, 9 - Torino - Italy.

