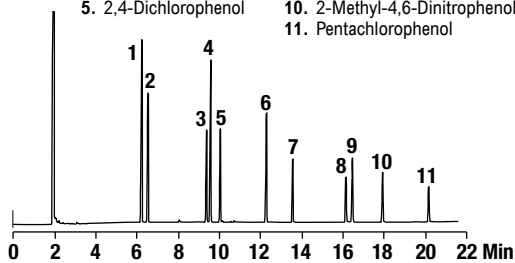


Semivolatiles

Phenols

- 1. Phenol
- 2. 2-Chlorophenol
- 3. 2-Nitrophenol
- 4. 2,4-Dimethylphenol
- 5. 2,4-Dichlorophenol
- 6. 4-Chloro-3-Methylphenol
- 7. 2,4,6-Trichlorophenol
- 8. 2,4-Dinitrophenol
- 9. 4-Nitrophenol
- 10. 2-Methyl-4,6-Dinitrophenol
- 11. Pentachlorophenol

CHROM 2286

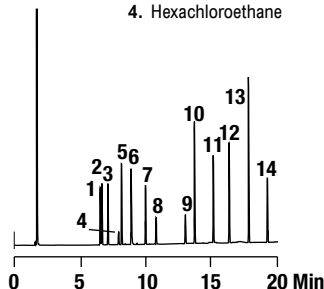


Column: Heliflex® AT™-5, 30m x 0.25mm x 0.25µm (Part No. 13656)
 Temp: 70°C (2 min hold) to 230°C at 8°C/min
 Carrier Gas: Helium at 0.8mL/min
 Detector: FID

Base/Neutral Mix

- 1. 1,3-Dichlorobenzene
- 2. 1,4-Dichlorobenzene
- 3. 1,2-Dichlorobenzene
- 4. Hexachloroethane
- 5. Nitrobenzene
- 6. Isophorone
- 7. 1,2,4-Trichlorobenzene
- 8. Hexachlorobutadiene
- 9. Hexachlorocyclopentadiene
- 10. 2-Chloronaphthalene
- 11. 2,6-Dinitrotoluene
- 12. 2,4-Dinitrotoluene
- 13. Azobenzene
- 14. Hexachlorobenzene

CHROM 2207

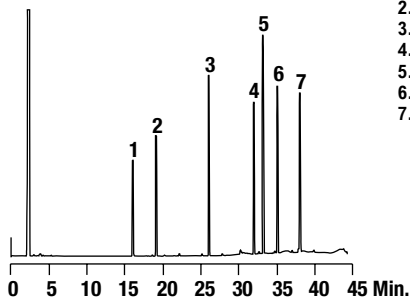


Column: Heliflex® AT™-5, 30m x 0.32mm x 0.25µm (Part No. 13658)
 Temp: 60°C (2 min hold) to 205°C at 8°C/min
 Carrier Gas: Helium at 2.2mL/min
 Detector: FID

Phthalate and Adipate Esters

- 1. Dimethyl Phthalate
- 2. Diethyl Phthalate
- 3. Di-n-Butyl Phthalate
- 4. Butylbenzyl Phthalate
- 5. Di(2-ethylhexyl) Adipate
- 6. Di(2-ethylhexyl) Phthalate
- 7. Di-n-Octyl Phthalate

CHROM 2104

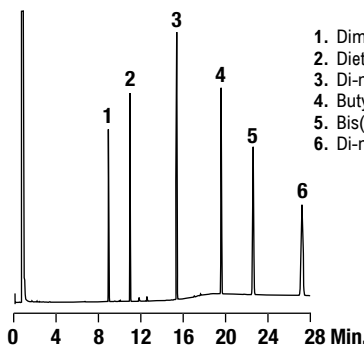


Column: Heliflex® AT™-1, 30m x 0.32mm x 0.25µm (Part No. 13640)
 Temp: 60°C (1 min hold) to 260°C at 6°C/min
 Carrier Gas: Helium at 32cm/sec
 Detector: FID at 295°C

EPA Method 606 - Phthalates

- 1. Dimethylphthalate (20ng)
- 2. Diethylphthalate (20ng)
- 3. Di-n-butylphthalate (20ng)
- 4. Butylbenzyl Phthalate (20ng)
- 5. Bis(2-ethylhexyl)phthalate (20ng)
- 6. Di-n-octylphthalate (20ng)

CHROM 2583

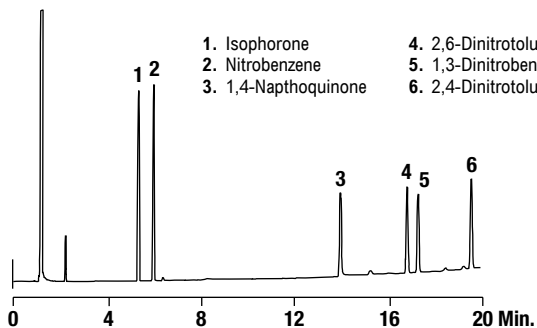


Column: Heliflex® AT™-5, 15m x 0.53mm x 1.00µm (Part No. 13569)
 Temp: 115°C (4 min hold) to 250°C at 10°C/min
 Carrier Gas: Helium at 3.4mL/min (35cm/sec)
 Detector: FID

EPA SW846 Method 8091
 Nitroaromatics and Cyclic Ketones

- 1. Isophorone
- 2. Nitrobenzene
- 3. 1,4-Naphthoquinone
- 4. 2,6-Dinitrotoluene
- 5. 1,3-Dinitrobenzene
- 6. 2,4-Dinitrotoluene

CHROM 2114

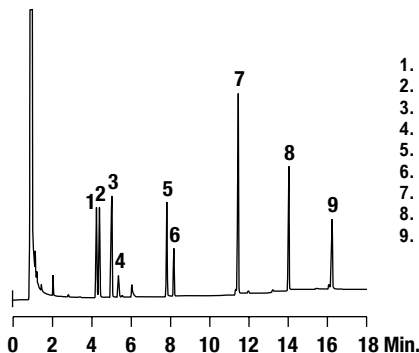


Column: Heliflex® AT™-1701, 30m x 0.53mm x 1.00µm (Part No. 13795)
 Temp: 120°C (2 min hold) to 200°C at 3°C/min
 Carrier Gas: Helium at 44.5cm/sec
 Detector: FID

EPA Method 612: Chlorinated Hydrocarbons

- 1. 1,3-Dichlorobenzene
- 2. 1,4-Dichlorobenzene
- 3. 1,2-Dichlorobenzene
- 4. Hexachloroethane
- 5. 1,2,4-Trichlorobenzene
- 6. Hexachlorobutadiene
- 7. Hexachlorocyclopentadiene
- 8. 2-Chloronaphthalene
- 9. Hexachlorobenzene

CHROM 1840



Column: Heliflex® AT™-1301, 30m x 0.53mm x 1.00µm (Part No. 13970)
 Temp: 90°C (4 min hold) to 190°C at 10°C/min
 Carrier Gas: Helium at 8.1mL/min
 Detector: FID

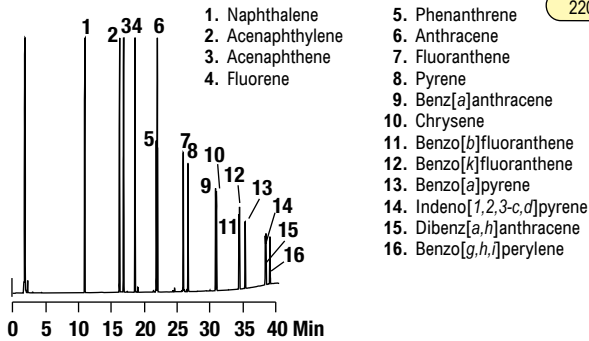
more applications

View our complete searchable chromatogram database at www.discoverysciences.com/chromdb/

Semivolatiles

EPA Method 610: Polynuclear Aromatic Hydrocarbons

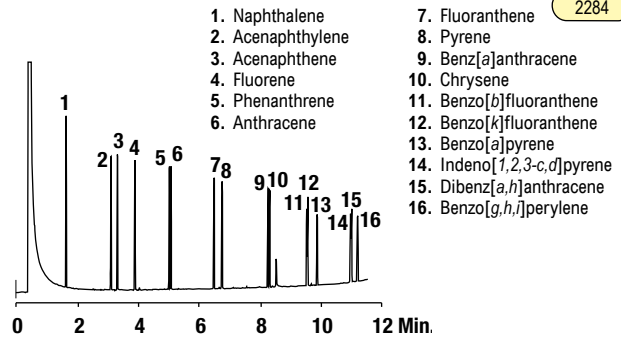
CHROM
2208



Column: Heliflex® AT™-5, 30m x 0.32mm x 0.25µm (Part No. 13658)
Temp: 60°C (2 min hold) to 315°C at 8°C/min
Carrier Gas: Helium at 1.6mL/min
Detector: FID

Fast PAH Analysis

CHROM
2284

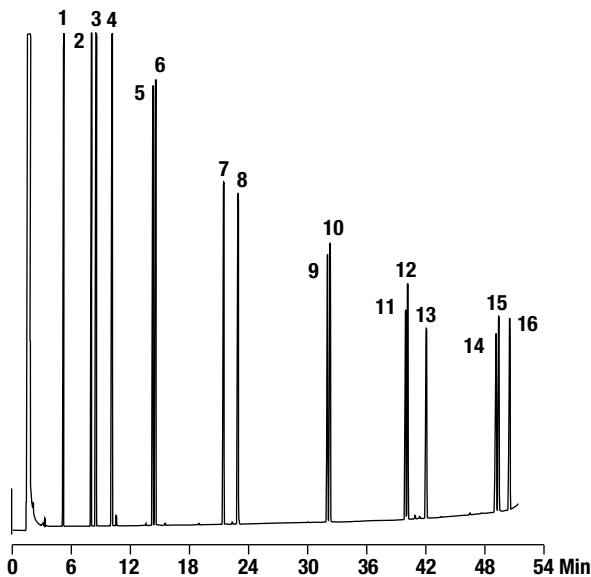


Column: Heliflex® AT™-5, 10m x 0.10mm x 0.10µm (Part No. 14438)
Temp: 100°C to 340°C at 20°C/min
Carrier Gas: Helium at 0.1mL/min (25 cm/sec)
Detector: FID

environmental

PAHs

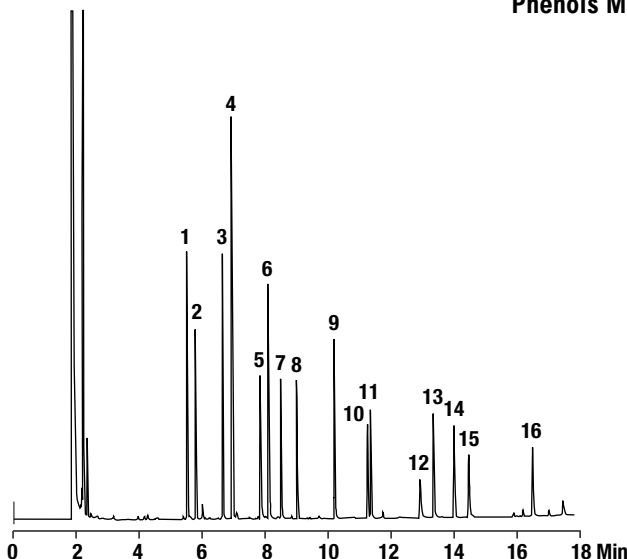
CHROM
2463



Column: Heliflex® AT™-5ms, 30m x 0.25mm x 0.25µm (Part No. 15807)
Temp: 80°C (1 min hold) to 160°C at 25°C/min, to 300°C at 3°C min, to 325°C at 25°C/min
Carrier Gas: Helium at 0.8mL/min (26cm/sec)
Detector: FID

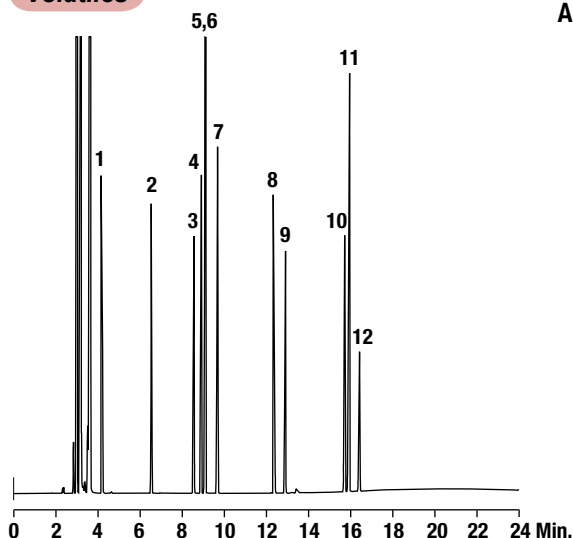
Phenols Mix on AT™-1ms

CHROM
2621



Column: Heliflex® AT™-1ms, 30m x 0.25mm x 0.25µm (Part No. 15897)
Temp: 60°C (0.5 min hold) to 235°C at 10°C/min
Carrier: Helium at 1mL/min (28cm/sec)
Detector: FID at 340°C

Volatiles



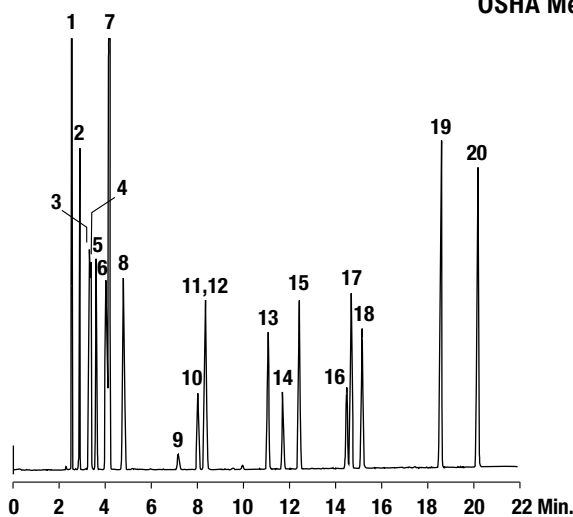
Aromatic Solvents

1. Benzene
2. Toluene
3. Chlorobenzene
4. Ethylbenzene
5. *m*-Xylene
6. *p*-Xylene
7. *o*-Xylene
8. 1,4-Dichlorobenzene
9. 1,2-Dichlorobenzene
10. 1,2,4-Trichlorobenzene
11. Naphthalene
12. 1,2,3-Trichlorobenzene

CHROM
2588

Column: Heliflex® AT™-5, 30m x 0.32mm x 1.00µm
(Part No. 13659)
Temp: 60°C (4 min hold) to 200°C at 10°C/min
Carrier Gas: Helium at 1.3mL/min (24cm/sec)
Detector: FID

OSHA Method 07: Organic Vapors

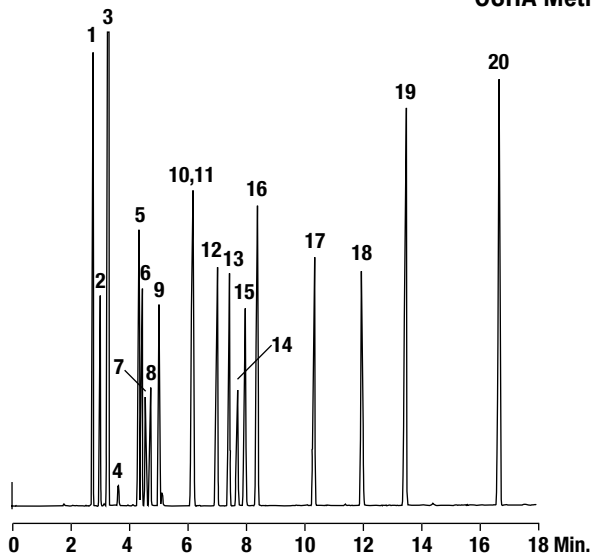


1. Pentane
2. Hexane
3. Isopropyl Ether
4. Isooctane
5. Heptane
6. Cyclohexane
7. Carbon Disulfide
8. Methylcyclohexane
9. *trans*-1,2-Dichloroethene
10. Ethyl Acetate
11. *tert*-Butyl Alcohol
12. Isopropyl Acetate
13. Propyl Acetate
14. *cis*-1,2-Dichloroethene
15. Isobutyl Acetate
16. 1,4-Dioxane
17. Butyl Acetate
18. 2-Butanol
19. Cumene
20. Chlorobenzene

CHROM
2589

Column: Heliflex® AT™-Wax, 30m x 0.32mm x 1.00µm
(Part No. 137382)
Temp: 40°C (4 min hold) to 140°C at 5°C/min
Carrier Gas: Helium at 1.4mL/min (25cm/sec)
Detector: FID

OSHA Method 07: Organic Vapors



1. Pentane
2. *tert*-Butyl Alcohol
3. Carbon Disulfide
4. *trans*-1,2-Dichloroethene
5. Hexane
6. Isopropyl Ether
7. *cis*-1,2-Dichloroethene
8. Ethyl Acetate
9. 2-Butanol
10. Cyclohexane
11. Isopropyl Acetate
12. Isooctane
13. Heptane
14. 1,4-Dioxane
15. Propyl Acetate
16. Methylcyclohexane
17. Isobutyl Acetate
18. Butyl Acetate
19. Chlorobenzene
20. Cumene

CHROM
2590

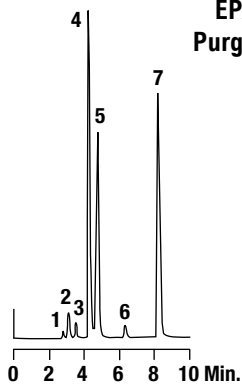
Column: Heliflex® AT™-5, 30m x 0.32mm x 1.00µm
(Part No. 13659)
Temp: 40°C (4 min hold) to 160°C at 5°C/min
Carrier Gas: Helium at 1.45mL/min (24cm/sec)
Detector: FID

more applications

View our complete searchable chromatogram database at www.discoverysciences.com/chromdb/

Volatiles

EPA Method 601 — Purgeable Halocarbons

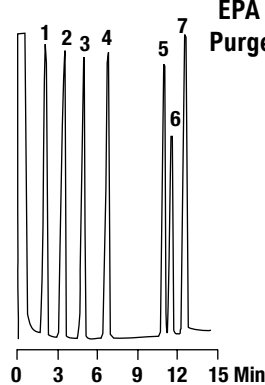


1. Methyl Chloride
2. Vinyl Chloride
3. Dichlorofluoromethane
4. Methyl Bromide
5. Ethyl Chloride
6. Trichlorofluoromethane
7. Methylene Chloride

Column: Heliflex® AT™-1, 30m x 0.53mm x 5.00µm
(Part No. 16843)
Temp: 35°C
Carrier Gas: Helium at 3mL/min
Detector: FID

CHROM
1132

EPA Method 602 — Purgeable Aromatics



1. Benzene
2. Toluene
3. Ethylbenzene
4. Chlorobenzene
5. 1,3-Dichlorobenzene
6. 1,4-Dichlorobenzene
7. 1,2-Dichlorobenzene

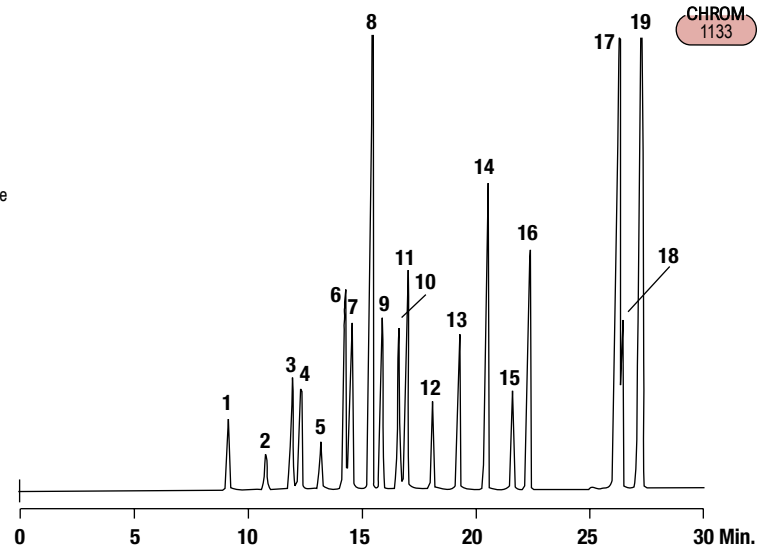
Column: Heliflex® AT™-WAX, 15m x 0.53mm x 5.00µm
(Part No. 16883)
Temp: 55°C to 150°C at 8°C/min
Carrier Gas: Helium at 7mL/min
Detector: FID

CHROM
1138

Halocarbons

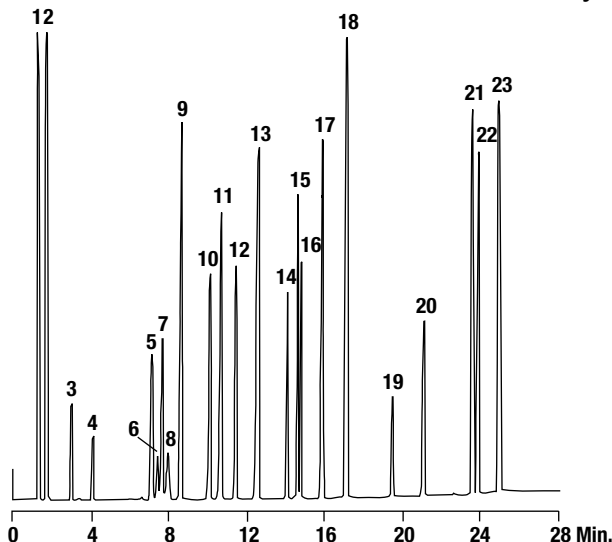
- | | |
|--|---------------------------------|
| 1. 1,1-Dichloroethane | 11. 1,2,2-Trichloroethane |
| 2. Chloroform | 12. Dibromochloromethane |
| 3. 1,2-Dichloroethane | 13. Tetrachloroethene |
| 4. 1,1,1-Trichloroethane | 14. Chlorobenzene |
| 5. Carbon Tetrachloride | 15. Bromoform |
| 6. 1,2-Dichloropropane | 16. 1,1,1,2,2-Tetrachloroethane |
| 7. Bromodichloromethane
+ Trichloroethene | 17. <i>m</i> -Dichlorobenzene |
| 8. 2-Chloroethyl Vinyl Ether | 18. <i>p</i> -Dichlorobenzene |
| 9. <i>trans</i> -1,3-Dichloropropene | 19. <i>o</i> -Dichlorobenzene |
| 10. <i>cis</i> -1,3-Dichloropropene | |

Column: Heliflex® AT™-1, 30m x 0.53mm x 5.00µm
(Part No. 16843)
Temp: 40°C (5 min hold) to 200°C/min at 5°C/min
Carrier Gas: Helium at 3mL/min
Detector: FID



CHROM
1133

Priority Pollutant Analysis



- | | |
|--------------------------|---------------------------------------|
| 1. Methane | 13. <i>cis</i> -1,3-Dichloropropene |
| 2. Chloromethane | 14. <i>trans</i> -1,3-Dichloropropene |
| 3. Chloroethane | 15. 1,1,2-Trichloroethane |
| 4. Methylene Chloride | 16. Tetrachloroethene |
| 5. Bromochloromethane | 17. Chlorodibromomethane |
| 6. Chloroform | 18. Chlorobenzene |
| 7. 1,1,1-Trichloroethane | 19. Bromoform |
| 8. Carbon Tetrachloride | 20. 1,1,2,2-Tetrachloroethane |
| 9. 1,2-Dichloroethane | 21. <i>m</i> -Dichlorobenzene |
| 10. Trichloroethylene | 22. <i>p</i> -Dichlorobenzene |
| 11. 1,2-Dichloropropane | 23. <i>o</i> -Dichlorobenzene |
| 12. Bromodichloromethane | |

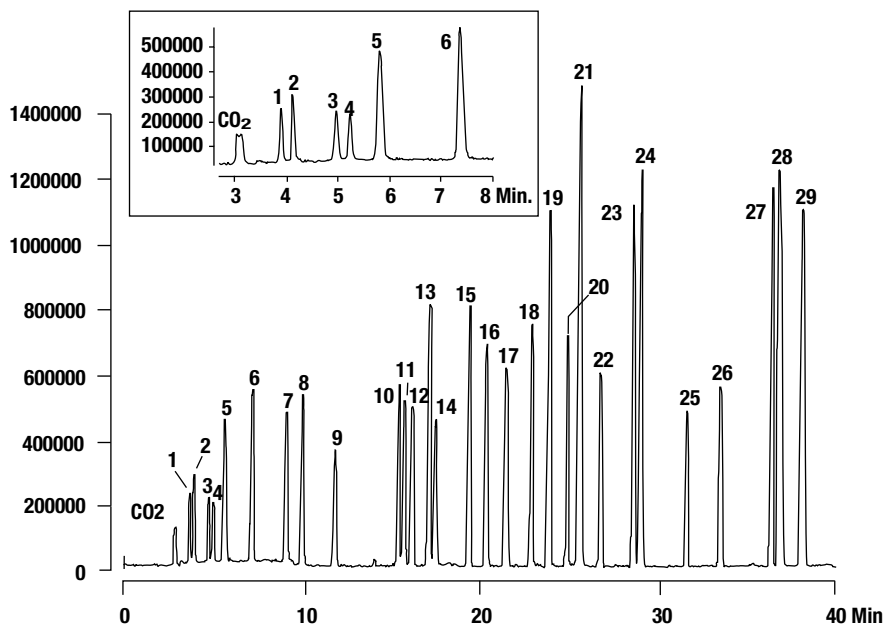
Column: Heliflex® AT™-624, 30m x 0.53mm x 3.00µm
(Part No. 16889)
Temp: 35°C (5 min hold) to 140°C at 5°C/min
Carrier Gas: Helium at 5mL/min
Detector: FID

CHROM
1234

EPA Method 624 — Purge & Trap Volatiles

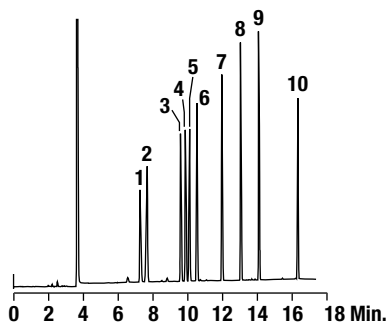
CHROM
1660

- | | | | |
|---------------------------|-------------------------------------|---|-------------------------------|
| 1. Chloromethane | 8. <i>trans</i> -1,2-Dichloroethane | 15. Trichloroethene | 22. Dibromochloromethane |
| 2. Vinyl Chloride | 9. 1,1-Dichloroethane | 16. 1,2-Dichloropropane | 23. Chlorobenzene |
| 3. Bromomethane | 10. Chloroform | 17. Bromodichloromethane | 24. Ethylbenzene |
| 4. Chloroethane | 11. 1,1,1-Trichloroethane | 18. <i>cis</i> -1,3-Dichloropropene | 25. Bromoform |
| 5. Trichlorofluoromethane | 12. Carbon Tetrachloride | 19. Toluene | 26. 1,1,2,2-Tetrachloroethane |
| 6. 1,1-Dichloroethane | 13. Benzene | 20. <i>trans</i> -1,3-Dichloropropene | 27. <i>m</i> -Dichlorobenzene |
| 7. Methylene Chloride | 14. 1,2-Dichloroethane | 21. Tetrachloroethene + 1,1,2-Trichloroethane | 28. <i>p</i> -Dichlorobenzene |
| | | | 29. <i>o</i> -Dichlorobenzene |



Column: Heliflex® AT™-624, 60m x 0.53mm x 3.00µm, (Part No. 13800)
Temp: 35°C (10 min hold) to 155°C at 4°C/min
Carrier Gas: Helium at 8mL/min
Sample: 200ppb in 5mL H₂O
Trap: Purge 11 min at 35mL/min, Desorb at 275°C for 4 min
Detector: MSD

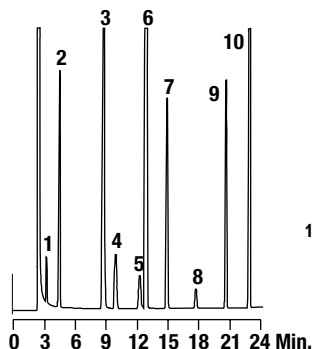
NIOSH 1450 — Acetates

CHROM
2591

1. Ethyl Acetate
2. *tert*-Butyl acetate
3. Propyl Acetate
4. *sec*-Butyl acetate
5. Ethyl Acrylate
6. Isobutyl Acetate
7. Butyl Acetate
8. Isoamyl Acetate
9. Amyl Acetate
10. 2-Ethoxyethyl Acetate

Column: Heliflex® AT™-Wax, 30m x 0.32mm x 1.00µm (Part No. 137382)
Temp: 40°C (5 min hold) to 180°C at 10°C/min
Carrier Gas: Helium at 1.6mL/min (28cm/sec)
Detector: FID

TCLP Volatiles Mix

CHROM
2064

1. Vinyl Chloride
2. 1,1-Dichloroethene
3. 2-Butanone
4. Chloroform
5. Carbon Tetrachloride
6. Benzene + 1,2-Dichloroethene
7. Trichloroethene
8. Tetrachloroethene
9. Chlorobenzene
10. 1,4-Dichlorobenzene

Column: Heliflex® AT™-502.2, 30m x 0.53mm x 3.00µm (Part No. 13792)
Temp: 40°C (10min hold) to 120°C at 4°C/min
Carrier Gas: Helium at 22cm/sec
Detector: FID

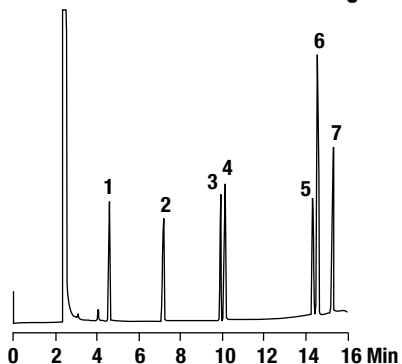
more applications

View our complete searchable chromatogram database at www.discoverysciences.com/chromdb/

Volatiles

EPA Method 602 — Purgeable Aromatics

CHROM 1233



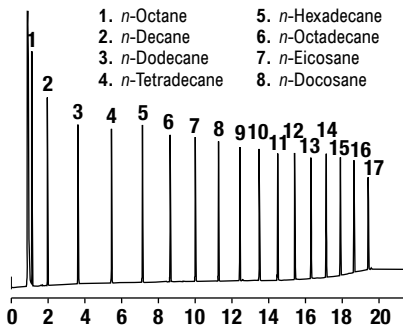
1. Benzene
2. Toluene
3. Chlorobenzene
4. Ethylbenzene
5. 1,3-Dichlorobenzene
6. 1,4-Dichlorobenzene
7. 1,2-Dichlorobenzene

Column: Heliflex® AT™-624, 30m x 0.32mm x 1.80µm (Part No. 13756)
Temp: 90°C (7 min hold) to 180°C at 10°C/min
Carrier Gas: Helium at 1.1mL/min
Detector: FID

UST

TRPH Standard (Florida)

CHROM 2622



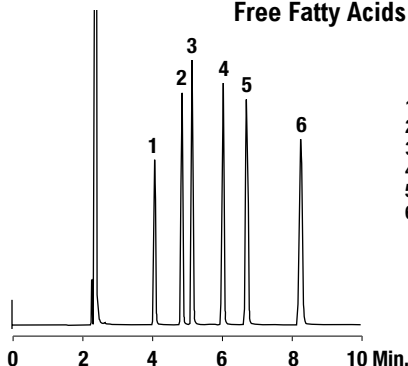
- | | | |
|--------------------------|-------------------------|--------------------------------|
| 1. <i>n</i> -Octane | 5. <i>n</i> -Hexadecane | 9. <i>n</i> -Tetracosane |
| 2. <i>n</i> -Decane | 6. <i>n</i> -Octadecane | 10. <i>n</i> -Hexacosane |
| 3. <i>n</i> -Dodecane | 7. <i>n</i> -Eicosane | 11. <i>n</i> -Octacosane |
| 4. <i>n</i> -Tetradecane | 8. <i>n</i> -Docosane | 12. <i>n</i> -Triacosane |
| | | 13. <i>n</i> -Dotriacontane |
| | | 14. <i>n</i> -Tetratriacontane |
| | | 15. <i>n</i> -Hexatriacontane |
| | | 16. <i>n</i> -Octatriacontane |
| | | 17. <i>n</i> -Tetracontane |

Column: Heliflex® AT™-1ht, 15m x 0.25mm x 0.10µm (Part No. 16367)
Temp: 75°C (1 min hold) to 340°C at 15°C/min
Carrier: Helium at 1mL/min (33cm/sec)
Detector: FID at 350°C

Free Fatty Acids

Free Fatty Acids

CHROM 2528

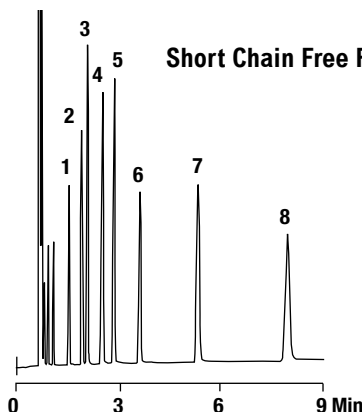


1. Propionic Acid
2. Butyric Acid
3. Valeric Acid
4. Caproic Acid
5. Heptanoic Acid
6. Caprylic Acid

Column: Heliflex® AT™-AquaWax-DA, 30m x 0.25mm x 0.25µm (Part No. 14537)
Temp: 180°C
Carrier Gas: Helium at 22cm/sec
Detector: FID

Short Chain Free Fatty Acids

CHROM 1808

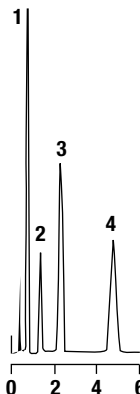


1. Acetic Acid
2. Propionic Acid
3. Isobutyric Acid
4. *n*-Butyric Acid
5. Isovaleric Acid
6. *n*-Valeric Acid
7. Caproic Acid
8. Heptanoic Acid

Column: Econo-Cap™ EC™-1000, 15m x 0.53mm x 1.20µm (Part No. 19684)
Temp: 150°C
Carrier Gas: Helium at 5mL/min
Detector: FID

C₁-C₃ Acids (Aqueous)

CHROM 1072

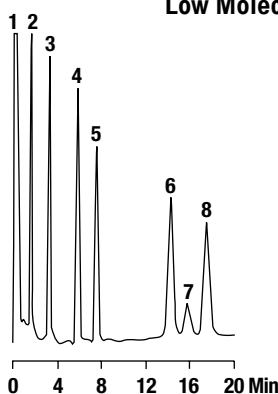


1. Water
2. Formic Acid
3. Acetic Acid
4. Propionic Acid

Column: 6ft x 2mm i.d., Glass
Packing: Poropak® QS, 80/100 (Part No. 2719)
Temp: 175°C
Carrier Gas: Helium at 25mL/min
Detector: TCD

Low Molecular Weight Acids

CHROM 1801



1. Formic Acid
2. Acetic Acid
3. Propionic Acid
4. Isobutyric Acid
5. Butyric Acid
6. Isovaleric Acid
7. Lactic Acid
8. Valeric Acid

Column: 2m x 2mm i.d., Glass
Packing: 4% Carbowax® 20M on Carbograph™ 1-DA, 80/120 (Part No. 17271)
Temp: 180°C
Carrier Gas: Nitrogen at 20mL/min
Detector: FID