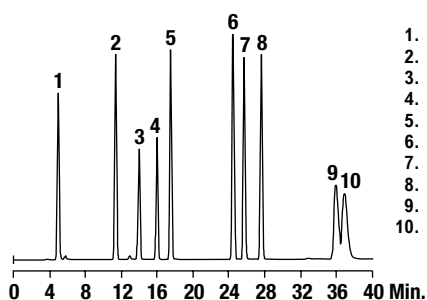


Solvents

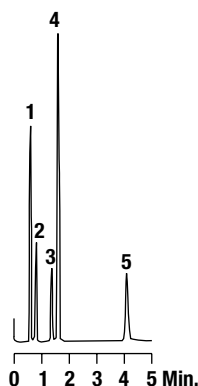
Volatile Organics

CHROM
1878

1. Methylene Chloride
2. Chloroform
3. Carbon Tetrachloride
4. 1,2-Dichloropropane
5. Benzene
6. Toluene
7. Chlorobenzene
8. Ethylbenzene
9. 1,3-Dichlorobenzene
10. 1,2-Dichlorobenzene

Column: 2m x 2mm i.d., Glass
Packing: 1% AT™-1000 on CarboGraph™ 1, 60/80 (Part No. 1733)
Temp: 45°C (3 min hold) to 230°C at 8°C/min
Carrier Gas: Nitrogen at 20mL/min
Detector: FID

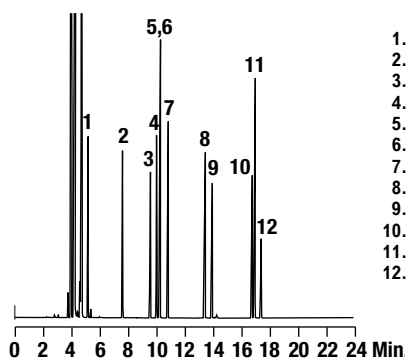
Glycol Ethers

CHROM
1337

1. Cellosolve Acetate
2. Methyl Carbitol®
3. Carbitol
4. *n*-Decane
5. Butyl Carbitol

Column: Heliflex® AT™-1, 10m x 0.53mm x 1.20µm (Part No. 935110)
Temp: 60°C to 160°C at 5°C/min
Carrier Gas: Helium at 20mL/min
Detector: FID

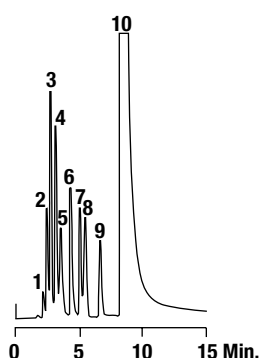
Aromatics

CHROM
2587

1. Benzene
2. Toluene
3. Chlorobenzene
4. Ethylbenzene
5. *m*-Xylene
6. *p*-Xylene
7. *o*-Xylene
8. 1,4-Dichlorobenzene
9. 1,2-Dichlorobenzene
10. 1,2,4-Trichlorobenzene
11. Naphthalene
12. 1,2,3-Trichlorobenzene

Column: Heliflex® AT™-1, 30m x 0.32mm x 1.00µm (Part No. 13641)
Temp: 60°C (4 min hold) to 200°C at 10°C/min
Carrier Gas: Helium at 1.3mL/min
Detector: FID

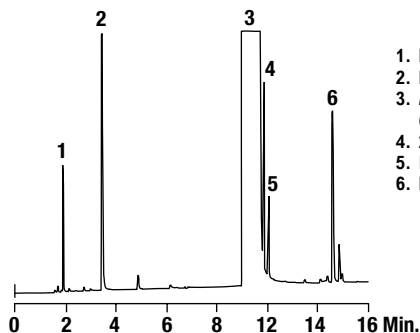
Impurities in Methyl Ethyl Ketone

CHROM
1221

1. Methanol
2. Ethanol
3. 2-Propanol
4. 2-Methyl-2-propanol
5. *n*-Propanol
6. 2-Butanol
7. Acetone
8. 1-Octene
9. Ethyl Acetate
10. Methyl Ethyl Ketone

Column: Heliflex® AT™-210, 30m x 0.53mm x 1.20µm (Part No. 985130)
Temp: 80°C (1 min hold) to 170°C at 7°C/minute
Carrier Gas: Helium at 3.7mL/min
Detector: FID

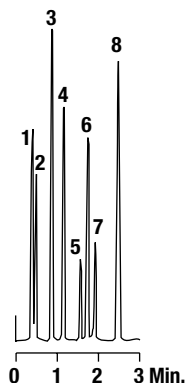
Ethylene Glycol, Ethylene Oxide and 2-Chloroethanol in DMF

CHROM
1812

1. Ethylene Oxide
2. Methanol
3. *N,N*-Dimethylformamide (solvent)
4. 2-Chloroethanol
5. Impurity in Solvent
6. Ethylene Glycol

Column: Econo-Cap™ EC™-Wax, 30m x 0.25mm x 0.25µm (Part No. 19655)
Temp: 40°C (2 min hold) to 180°C at 10°C/min
Carrier Gas: Helium at 0.65mL/min
Detector: FID

Halogenated Aromatics

CHROM
1345

1. 2-Bromobutane
2. 1-Bromobutane
3. Chlorobenzene
4. 1,4-Dichlorobutane
5. 1-Bromohexane
6. Bromocyclohexane
7. *o*-Chlorotoluene
8. Benzyl Chloride

Column: Heliflex® AT™-1, 10m x 0.53mm x 1.20µm (Part No. 935110)
Temp: 60°C
Carrier Gas: Helium at 10mL/min
Detector: FID

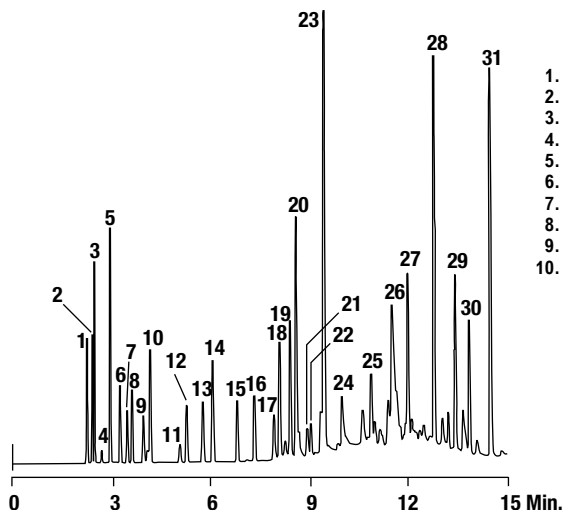
more applications

View our complete searchable chromatogram database at www.discoverysciences.com/chromdb/

Solvents

Industrial Solvent Mix

CHROM
1015

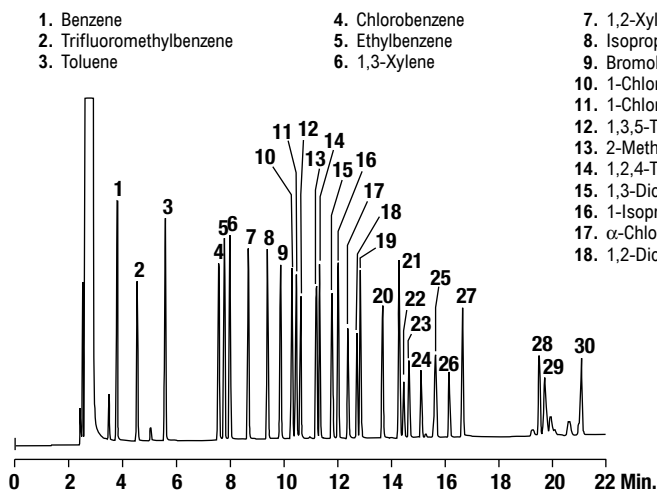


- | | | |
|---------------------------|--------------------------|---------------------------|
| 1. Pentane | 11. Trichloroethene | 21. 1-Butanol |
| 2. 2,2,4-Trimethylpentane | 12. 4-Methyl-2-pentanone | 22. Nitromethane |
| 3. Cyclohexane | 13. 2-Butanol | 23. 1,2-Xylene |
| 4. Methyl Formate | 14. Toluene | 24. 3-Methyl-1-butanol |
| 5. Acetone | 15. Butyl Acetate | 25. 2-Ethoxyethanol |
| 6. Tetrahydrofuran | 16. 2-Methyl-1-propanol | 26. 1-Pentanol |
| 7. Ethyl Acetate | 17. 2-Nitropropane | 27. Cyclohexanol |
| 8. 2-Butanone | 18. Ethylbenzene | 28. 2-Ethoxyethyl Acetate |
| 9. 2-Propanol | 19. 1,4-Xylene | 29. 1-Hexanol |
| 10. Benzene | 20. 1,3-Xylene | 30. 2-Butoxyethanol |
| | | 31. 1-Heptanol |

Column: Econo-Cap™ EC™-Wax, 30m x 0.32mm x 0.25µm (Part No. 19654)
Temp: 50°C (5 min hold) to 150°C at 10°C/min
Carrier Gas: Helium at 1.08mL/min
Detector: FID

Substituted Aromatics

CHROM
1838

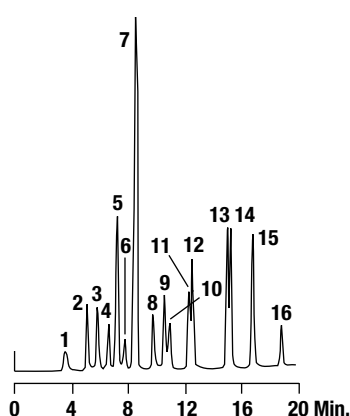


- | | | | |
|---------------------------|------------------|---------------------------------|--------------------------------|
| 1. Benzene | 4. Chlorobenzene | 7. 1,2-Xylene | 19. 1-Bromo-4-methylbenzene |
| 2. Trifluoromethylbenzene | 5. Ethylbenzene | 8. Isopropylbenzene | 20. 4-Chlorostyrene |
| 3. Toluene | 6. 1,3-Xylene | 9. Bromobenzene | 21. 1-Bromo-4-chlorobenzene |
| | | 10. 1-Chloro-2-methylbenzene | 22. 1,2,4,5-Tetramethylbenzene |
| | | 11. 1-Chloro-4-methylbenzene | 23. 2,4-Dichlorotoluene |
| | | 12. 1,3,5-Trimethylbenzene | 24. 1-Iodo-4-methylbenzene |
| | | 13. 2-Methyl-2-phenylpropane | 25. Tetrahydronaphthalene |
| | | 14. 1,2,4-Trimethylbenzene | 26. 1,2,4-Trichlorobenzene |
| | | 15. 1,3-Dichlorobenzene | 27. Naphthalene |
| | | 16. 1-Isopropyl-4-methylbenzene | 28. Hexachlorobutadiene |
| | | 17. α-Chlorotoluene | 29. 1,2,4,5-Tetrachlorobenzene |
| | | 18. 1,2-Dichlorobenzene | 30. 1-Chloronaphthalene |

Column: Heliflex® AT™-1301, 30m x 0.25mm x 0.25µm (Part No. 13959)
Temp: 50°C (3 min hold) to 170°C at 7°C/min
Carrier Gas: Helium at 0.65mL/min
Detector: FID

NIOSH Solvents

CHROM
1177



- | | |
|--------------------------|-------------------------------------|
| 1. Carbon Disulfide | 9. Chloroform |
| 2. Acetone | 10. Tetrachloroethylene |
| 3. Carbon Tetrachloride | 11. Toluene |
| 4. 1,1,1-Trichloroethane | 12. p-Dioxane + Ethylene dichloride |
| 5. Methyl Ethyl Ketone | 13. p-Xylene |
| 6. Methylene Chloride | 14. m-Xylene |
| 7. Benzene | 15. o-Xylene |
| 8. Trichloroethylene | 16. 1,1,2-Trichloroethane |

Column: 20ft x 1/8" o.d., SS (Part No. C-5000*)
Packing: 10% AT™-1000 on Chromosorb® W-AW, 80/100 (Part No. 12001)
Temp: 60°C (2 min hold) to 160°C at 5°C/minute
Carrier Gas: Nitrogen at 30mL/min
Detector: FID
 *Custom column. Must specify dimensions, packing and GC.