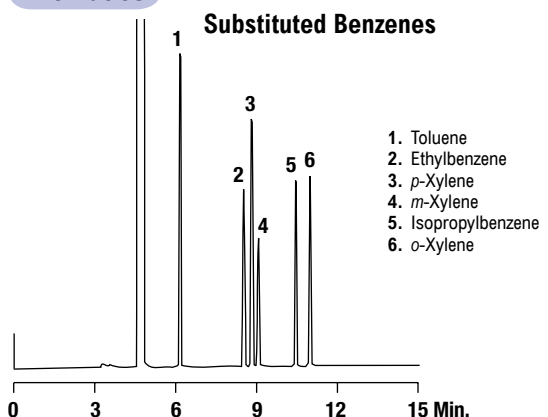
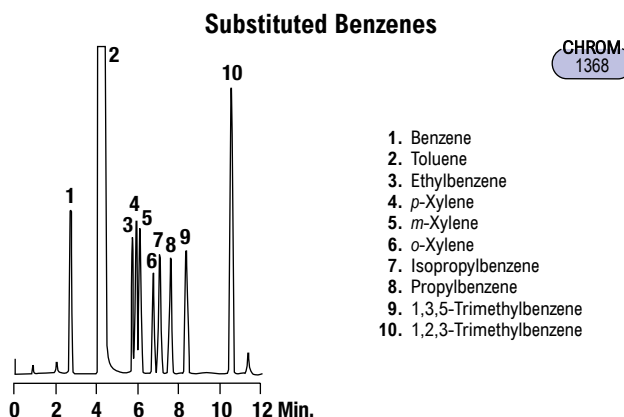


**Aromatics**



1. Toluene
2. Ethylbenzene
3. *p*-Xylene
4. *m*-Xylene
5. Isopropylbenzene
6. *o*-Xylene

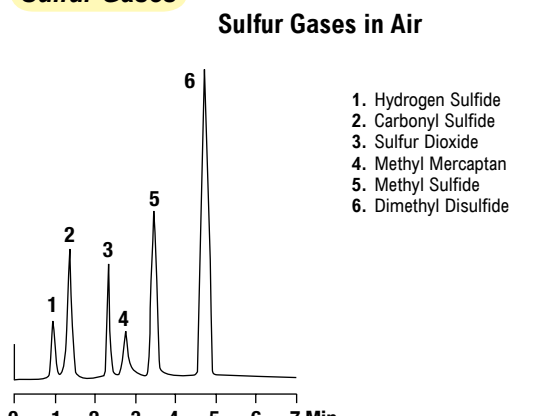
**Column:** Heliflex® AT™-1000, 60m x 0.25mm x 0.20µm (Part No. 972560)  
**Temp:** 70°C  
**Carrier Gas:** Helium at 0.7mL/min  
**Detector:** FID



1. Benzene
2. Toluene
3. Ethylbenzene
4. *p*-Xylene
5. *m*-Xylene
6. *o*-Xylene
7. Isopropylbenzene
8. Propylbenzene
9. 1,3,5-Trimethylbenzene
10. 1,2,3-Trimethylbenzene

**Column:** Heliflex® AT™-Wax, 30m x 0.53mm x 1.20µm (Part No. 9951302)  
**Temp:** 40°C to 150°C at 5°C/min  
**Carrier Gas:** Hydrogen at 6mL/min  
**Detector:** FID

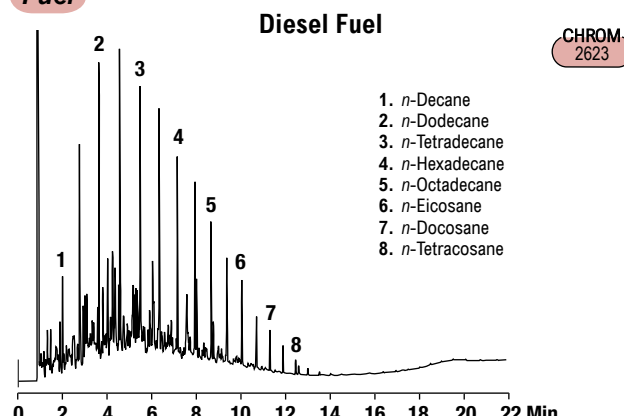
**Sulfur Gases**



1. Hydrogen Sulfide
2. Carbonyl Sulfide
3. Sulfur Dioxide
4. Methyl Mercaptan
5. Methyl Sulfide
6. Dimethyl Disulfide

**Column:** 30" x 1/8" o.d., PTFE (Part No. 9781)  
**Packing:** 18" Super Q, 80/100 (Part No. 2735)  
**Temp:** 30°C (1 min hold) to 210°C at 40°C/min  
**Carrier Gas:** Helium at 40mL/min  
**Detector:** FPD

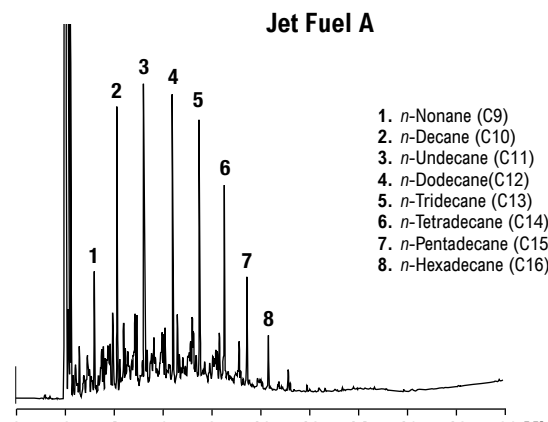
**Fuel**



1. *n*-Decane
2. *n*-Dodecane
3. *n*-Tetradecane
4. *n*-Hexadecane
5. *n*-Octadecane
6. *n*-Eicosane
7. *n*-Docosane
8. *n*-Tetracosane

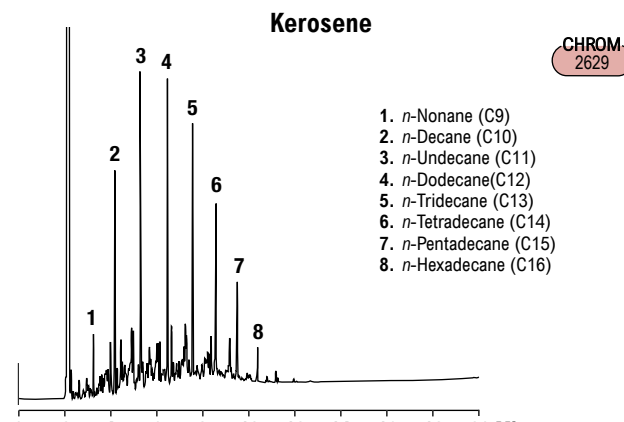
**Column:** Heliflex® AT™-1ht, 15m x 0.25mm x 0.10µm (Part No. 16367)  
**Temp:** 75°C (1 min hold) to 340°C at 15°C/min  
**Carrier Gas:** Helium at 1mL/min (33cm/sec)  
**Detector:** FID at 350°C

petroleum & petrochemical



1. *n*-Nonane (C9)
2. *n*-Decane (C10)
3. *n*-Undecane (C11)
4. *n*-Dodecane(C12)
5. *n*-Tridecane (C13)
6. *n*-Tetradecane (C14)
7. *n*-Pentadecane (C15)
8. *n*-Hexadecane (C16)

**Column:** Heliflex® AT™-1ht, 30m x 0.25mm x 0.10µm (Part No. 16368)  
**Temp:** 75°C (2 min hold) to 325°C at 15°C/min  
**Carrier Gas:** Helium at 1mL/min (28cm/sec)  
**Detector:** FID at 385°C

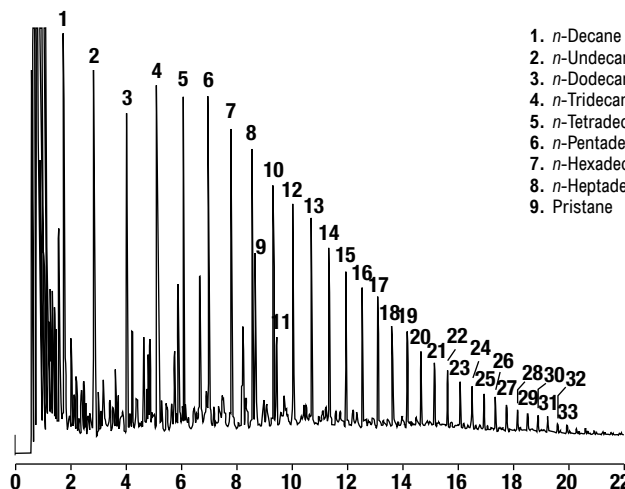


1. *n*-Nonane (C9)
2. *n*-Decane (C10)
3. *n*-Undecane (C11)
4. *n*-Dodecane(C12)
5. *n*-Tridecane (C13)
6. *n*-Tetradecane (C14)
7. *n*-Pentadecane (C15)
8. *n*-Hexadecane (C16)

**Column:** Heliflex® AT™-1ht, 30m x 0.25mm x .10µm (Part No. 16368)  
**Temp:** 75°C (2 min hold) to 325°C at 15°C/min  
**Carrier Gas:** Helium at 1mL/min (28cm/sec)  
**Detector:** FID at 385°C

## Fuel

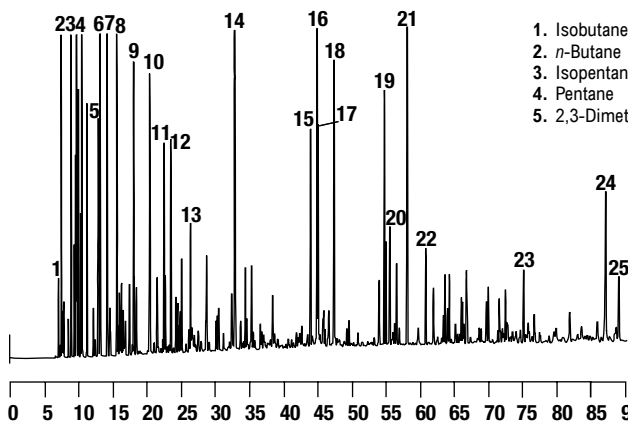
## Texas Crude Oil

CHROM  
2626

- |                          |                           |                                 |
|--------------------------|---------------------------|---------------------------------|
| 1. <i>n</i> -Decane      | 10. <i>n</i> -Octadecane  | 22. <i>n</i> -Nonacosane        |
| 2. <i>n</i> -Undecane    | 11. Phytane               | 23. <i>n</i> -Triacontane       |
| 3. <i>n</i> -Dodecane    | 12. <i>n</i> -Nonadecane  | 24. <i>n</i> -Hentriacontane    |
| 4. <i>n</i> -Tridecane   | 13. <i>n</i> -Eicosane    | 25. <i>n</i> -Dotriacontane     |
| 5. <i>n</i> -Tetradecane | 14. <i>n</i> -Heneicosane | 26. <i>n</i> -Tritriacontane    |
| 6. <i>n</i> -Pentadecane | 15. <i>n</i> -Docosane    | 27. <i>n</i> -Tetraatriacontane |
| 7. <i>n</i> -Hexadecane  | 16. <i>n</i> -Tricosane   | 28. <i>n</i> -Pentatriacontane  |
| 8. <i>n</i> -Heptadecane | 17. <i>n</i> -Tetracosane | 29. <i>n</i> -Hexatriacontane   |
| 9. Pristane              | 18. <i>n</i> -Pentacosane | 30. <i>n</i> -Heptatriacontane  |
|                          | 19. <i>n</i> -Hexacosane  | 31. <i>n</i> -Octatriacontane   |
|                          | 20. <i>n</i> -Heptacosane | 32. <i>n</i> -Nonatriacontane   |
|                          | 21. <i>n</i> -Octacosane  | 33. <i>n</i> -Tetracontane      |

**Column:** Heliflex® AT™-1ht, 15m x 0.25mm x 0.10µm (Part No. 16367)  
**Temp:** 70°C (2 min hold) to 380°C at 15°C/min  
**Carrier Gas:** Helium at 1.6mL/min (45cm/sec)  
**Detector:** FID at 390°C

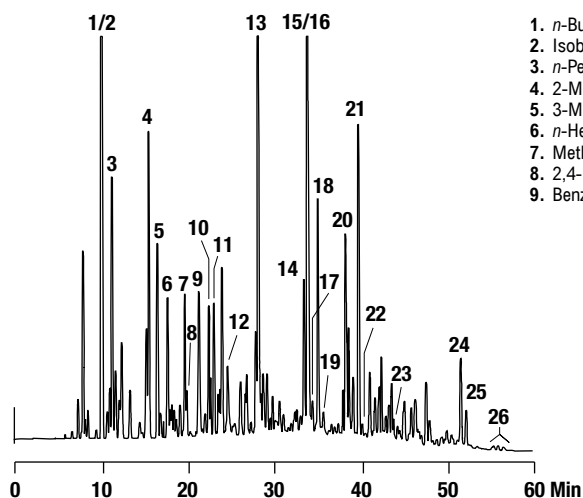
## Unleaded Gasoline

CHROM  
1859

- |                       |                        |                             |
|-----------------------|------------------------|-----------------------------|
| 1. Isobutane          | 6. 2-Methylpentane     | 16. <i>m</i> -Xylene        |
| 2. <i>n</i> -Butane   | 7. 3-Methylpentane     | 17. <i>p</i> -Xylene        |
| 3. Isopentane         | 8. Hexane              | 18. <i>o</i> -Xylene        |
| 4. Pentane            | 9. 2,4-Dimethylpentane | 19. 1-Methyl-3-Ethylbenzene |
| 5. 2,3-Dimethylbutane | 10. Benzene            | 20. 1,3,5-Trimethylbenzene  |
|                       | 11. 2-Methylhexane     | 21. 1,2,4-Trimethylbenzene  |
|                       | 12. 3-Methylhexane     | 22. 1,2,3-Trimethylbenzene  |
|                       | 13. <i>n</i> -Heptane  | 23. Naphthalene             |
|                       | 14. Toluene            | 24. 2-Methylnaphthalene     |
|                       | 15. Ethylbenzene       | 25. 1-Methylnaphthalene     |

**Column:** Heliflex® AT™-Petro, 100m x 0.25mm x 0.50µm (Part No. 13948)  
**Temp:** 35°C (15 min hold) to 200°C at 2°C/min  
**Carrier Gas:** Helium at 0.65mL/min  
**Detector:** FID

## Unleaded Gasoline

CHROM  
2041

- |                        |                       |                            |
|------------------------|-----------------------|----------------------------|
| 1. <i>n</i> -Butane    | 10. 2-Methylhexane    | 19. <i>n</i> -Nonane       |
| 2. Isobutane           | 11. 3-Methylhexane    | 20. Propylbenzene          |
| 3. <i>n</i> -Pentane   | 12. <i>n</i> -Heptane | 21. 1,2,4-Trimethylbenzene |
| 4. 2-Methylpentane     | 13. Toluene           | 22. <i>n</i> -Decane       |
| 5. 3-Methylpentane     | 14. Ethylbenzene      | 23. <i>n</i> -Undecane     |
| 6. <i>n</i> -Hexane    | 15. <i>m</i> -Xylene  | 24. 2-Methylnaphthalene    |
| 7. Methylcyclopentane  | 16. <i>p</i> -Xylene  | 25. 1-Methylnaphthalene    |
| 8. 2,4-Dimethylpentane | 17. 2-Methyloctane    | 26. Dimethylnaphthalenes   |
| 9. Benzene             | 18. <i>o</i> -Xylene  |                            |

**Column:** Heliflex® AT™-1, 30m x 0.25mm x 1.00µm (Part No. 13639)  
**Temp:** 35°C (12 min hold) to 200°C at 4°C/min  
**Carrier Gas:** Helium at 0.65mL/min  
**Split Ratio:** 100:1  
**Detector:** FID

## more applications

View our complete searchable chromatogram database at [www.discoverysciences.com/chromdb/](http://www.discoverysciences.com/chromdb/)