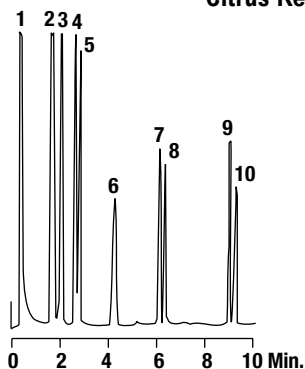


Essential Oils

Citrus Reference Mix

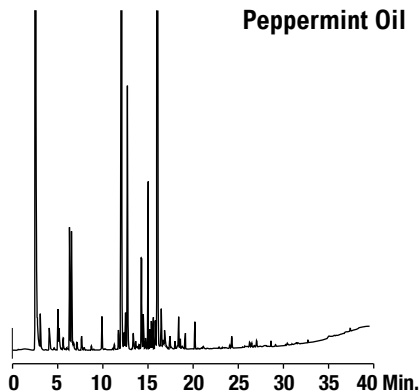


1. α -Pinene
2. Camphene
3. β -Pinene
4. *p*-Cymene
5. Limonene
6. Nonanal + Linalool
7. Terpen-4-ol
8. γ -Terpineol
9. Neryl Acetate
10. Geranyl Acetate

CHROM
1311

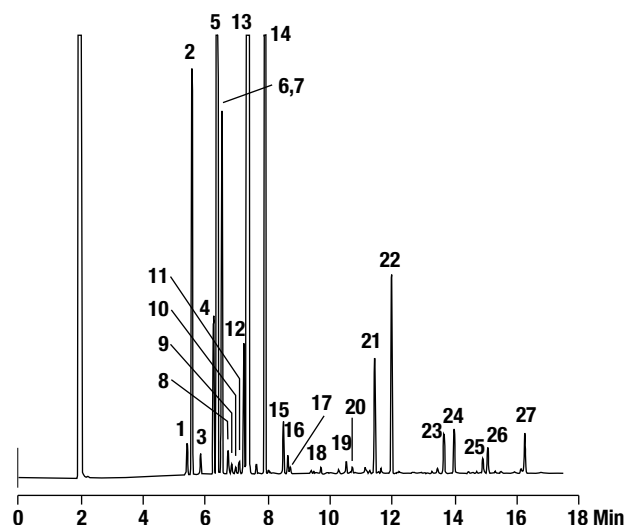
Column: Heliflex® AT™-1, 10m x 0.53mm x 1.20 μ m
(Part No. 935110)
Temp: 75°C (5 min hold) to 150°C at 10°C/min
Carrier Gas: Helium at 5mL/min
Detector: FID

Peppermint Oil

CHROM
2529

Column: Heliflex® AT™-AquaWax, 30m x 0.25mm x 0.25 μ m
(Part No. 12437)
Temp: 75°C to 260°C at 5°C/min
Carrier Gas: Helium at 22cm/sec
Detector: FID

Lemon Oil

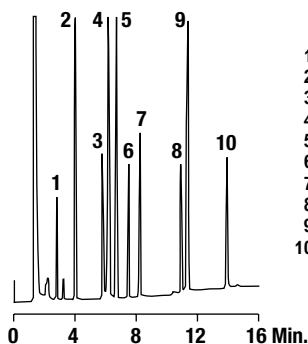
CHROM
2288

- | | |
|----------------------------|--|
| 1. α -Thujene | 15. Terpineol |
| 2. α -Pinene | 16. Linalool |
| 3. Camphene | 17. Nonanal |
| 4. Sabinene | 18. Citronellal |
| 5. β -Pinene | 19. Terpinen-4-ol |
| 6. 6-Methyl-5-hepten-2-one | 20. α -Terpineol |
| 7. Myrcene | 21. Neral |
| 8. Octanol | 22. Gerinal |
| 9. α -Phellandrene | 23. Neryl Acetate |
| 10. 3-Carene | 24. Geranyl Acetate |
| 11. α -Terpinene | 25. β -Caryophyllene |
| 12. <i>p</i> -Cymene | 26. <i>trans</i> - α -Bergamotene |
| 13. Limonene | 27. β -Bisabolene |
| 14. γ -Terpinene | |

Column: Heliflex® AT™-5, 30m x 0.25mm x 0.25 μ m
(Part No. 13656)
Temp: 70°C (2 min hold) to 200°C at 8°C/min
Carrier Gas: Helium at 0.8mL/min
Detector: FID

FAMES

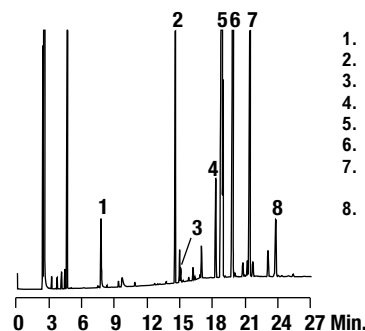
C14:0-C24:0 Fatty Acid Methyl Esters

CHROM
1317

1. Methyl Myristate (C14:0)
2. Methyl Palmitate (C16:0)
3. Methyl Stearate (C18:0)
4. Methyl Oleate (C18:1 *cis*)
5. Methyl Linoleate (C18:2 *cis,cis*)
6. Methyl Linolenate (C18:3 *cis,cis,cis*)
7. Methyl Arachidate (C20:0)
8. Methyl Behenate (C22:0)
9. Methyl Erucate (C22:1 *cis*)
10. Methyl Lignocerate (C24:0)

Column: Heliflex® AT™-Wax, 25m x 0.25mm x 0.20 μ m
(Part No. 9925252)
Temp: 180°C to 240°C at 5°C/min
Carrier Gas: Hydrogen at 0.8mL/min
Detector: FID

Canola Oil

CHROM
2333

1. Methyl Myristate (C14:0)
2. Methyl Palmitate (C16:0)
3. Methyl Palmitoleate (C16:1 *cis*)
4. Methyl Stearate (C18:0)
5. Methyl Oleate (C18:1 *cis*)
6. Methyl Linoleate (C18:2 *cis,cis*)
7. Methyl Linolenate (C18:3 *cis,cis,cis*)
8. Methyl Arachidate (C20:0)

Column: Econo-Cap™ EC™-Wax, 30m x 0.25mm x 0.25 μ m
(Part No. 19655)
Temp: 150°C (2 min hold) to 225°C at 5°C/min
Carrier Gas: Helium at 0.68mL/min
Detector: FID

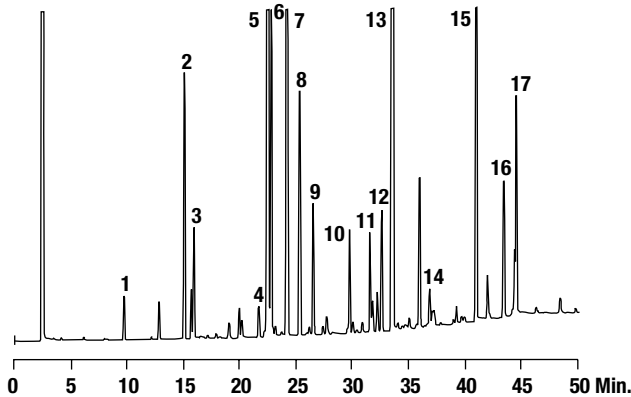
more applications

View our complete searchable chromatogram database at www.discoverysciences.com/chromdb/

FAMES

PUFA (Animal Source)

CHROM 1845

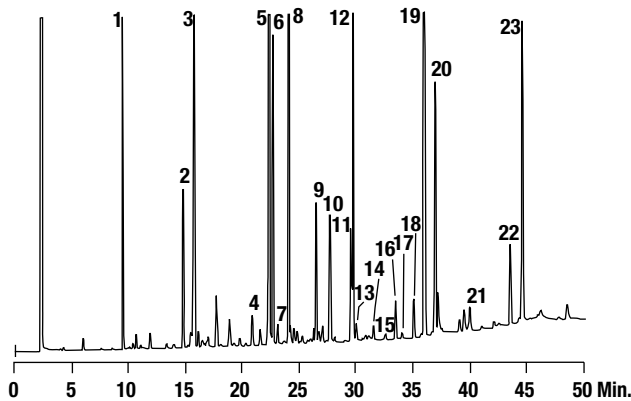


- 1. C14:0
- 2. C16:0
- 3. C16:1 ω7
- 4. C18:0
- 5. C18:1 ω9
- 6. C18:1 ω7
- 7. C18:2 ω6
- 8. C18:3 ω3
- 9. C20:1 ω11
- 10. C20:1 ω9
- 11. C20:2 ω6
- 12. C20:3 ω6
- 13. C20:4 ω6
- 14. C20:5 ω3
- 15. C22:4 ω6
- 16. C22:5 ω3
- 17. C22:6 ω3

Column: Heliflex® AT™-Wax, 30m x 0.25mm x 0.25µm (Part No. 136462)
Temp: 160°C to 250°C at 2°C/min
Carrier Gas: Helium at 0.65mL/min
Detector: FID

PUFA (Marine Source)

CHROM 1844

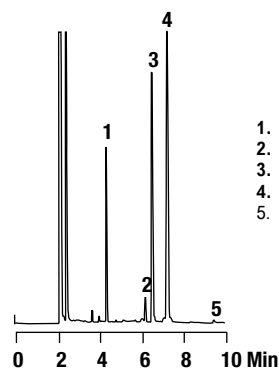


- 1. C14:0
- 2. C16:0
- 3. C16:1 ω7
- 4. C16:4 ω1
- 5. C18:1 ω9
- 6. C18:1 ω7
- 7. C18:1 ω5
- 8. C18:2 ω6
- 9. C18:3 ω3
- 10. C18:4 ω3
- 11. C20:1 ω11
- 12. C20:1 ω9
- 13. C20:1 ω7
- 14. C20:2 ω6
- 15. C20:3 ω6
- 16. C20:4 ω6
- 17. C20:3 ω3
- 18. C20:4 ω3
- 19. C22:1 ω11
- 20. C22:1 ω9
- 21. C21:5 ω3
- 22. C22:5 ω3
- 23. C22:6 ω3

Column: Heliflex® AT™-Wax, 30m x 0.25mm x 0.25µm (Part No. 136462)
Temp: 160°C to 250°C at 2°C/min
Carrier Gas: Helium at 0.65mL/min
Detector: FID

Corn Oil

CHROM 1580

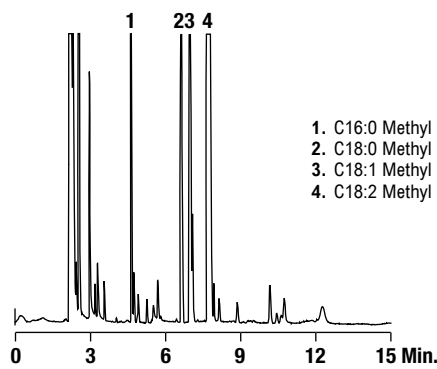


- 1. Methyl Palmitate [C16:0]
- 2. Methyl Stearate [C18:0]
- 3. Methyl Oleate [C18:1 cis]
- 4. Methyl Linoleate [C18:2 cis,cis]
- 5. Methyl Linolenate [C18:3 cis,cis,cis]

Column: Econo-Cap™ EC™-Wax, 30m x 0.32mm x 0.25µm (Part No. 19654)
Temp: 220°C
Carrier Gas: Helium at 1.09mL/min
Detector: FID

Safflower Oil

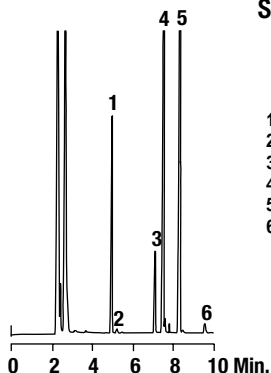
CHROM 2517



- 1. C16:0 Methyl Ester
- 2. C18:0 Methyl Ester
- 3. C18:1 Methyl Ester
- 4. C18:2 Methyl Ester

Column: Heliflex® AT™-FAME, 30m x 0.25mm x 0.25µm (Part No. 12436)
Temp: 220°C
Carrier Gas: Helium at 23cm/sec
Detector: FID

FAMES



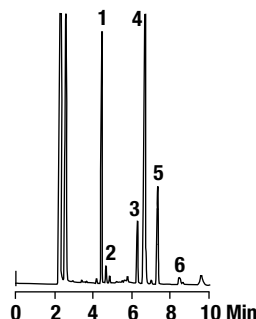
Sesame Oil

CHROM
1575

1. Methyl Palmitate [C16:0]
2. Methyl Palmitoleate [C16:1]
3. Methyl Stearate [C18:0]
4. Methyl Oleate [C18:1 *cis*]
5. Methyl Linoleate [C18:2 *cis,cis*]
6. Methyl Linolenate [C18:3 *cis,cis,cis*]

Column: Econo-Cap™ EC™-Wax, 30m x 0.25mm x 0.25µm
(Part No. 19655)
Temp: 220°C
Carrier Gas: Helium at 0.67mL/min
Detector: FID

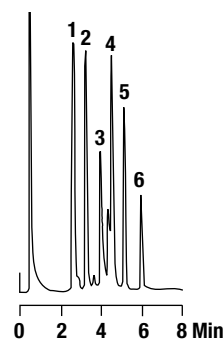
Olive Oil

CHROM
1012

1. Methyl Palmitate [C16:0]
2. Methyl Palmitoleate [C16:1]
3. Methyl Stearate [C18:0]
4. Methyl Oleate [C18:1 *cis*]
5. Methyl Linoleate [C18:2 *cis,cis*]
6. Methyl Linolenate [C18:3 *cis,cis,cis*]

Column: Econo-Cap™ EC™-Wax, 30m x 0.32mm x 0.25µm
(Part No. 19654)
Temp: 220°C
Carrier Gas: Helium at 1.09mL/min
Detector: FID

Sugars



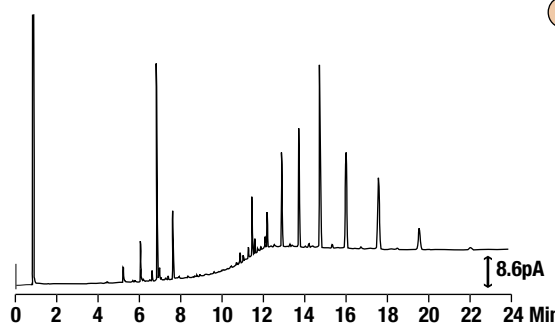
TMS Sugars

CHROM
1118

1. L-Arabinose
2. D-Xylose
3. β-D-Fructose
4. α-D-Fructose
5. β-D-Glucose
6. d-Galactose

Column: 6ft x 2mm i.d., Glass
Packing: 3% OV™-101 on Chromosorb® W-HP, 80/100
(Part No. 12019)
Temp: 160°C to 250°C at 10°C/min
Carrier Gas: Nitrogen at 20mL/min
Detector: FID

Wax

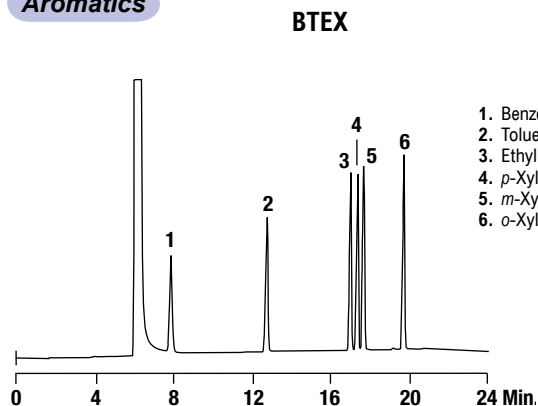


Carnuba Wax

CHROM
2625

Column: Heliflex® AT™-1ht, 15m x 0.25mm x 0.10µm
(Part No. 16367)
Temp: 225°C (1 min hold) to 380°C at 15°C/min
Carrier Gas: Helium at 0.9mL/min (35cm/sec)
Detector: FID at 385°C

Aromatics



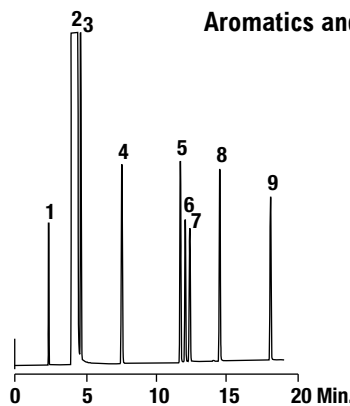
BTEX

CHROM
1810

1. Benzene
2. Toluene
3. Ethylbenzene
4. *p*-Xylene
5. *m*-Xylene
6. *o*-Xylene

Column: Econo-Cap™ EC™-Wax, 30m x 0.53mm x 1.20µm
(Part No. 19659)
Temp: 40°C (8 min hold) to 100°C at 4°C/min
Carrier Gas: Helium at 2.5mL/min (21.9 cm/sec)
Detector: FID at 275°C

Aromatics and MTBE

CHROM
1939

1. MTBE
2. Methanol
3. Benzene
4. Toluene
5. Ethylbenzene
6. *p*-Xylene
7. *m*-Xylene
8. *o*-Xylene
9. Styrene

Column: Econo-Cap™ EC™-Wax, 30m x 0.32mm x 0.25µm
(Part No. 19654)
Temp: 40°C (8 min hold) to 100°C at 4°C/min
Carrier Gas: Helium at 1.08mL/min
Detector: FID

more applications

View our complete searchable chromatogram database at www.discoverysciences.com/chromdb/