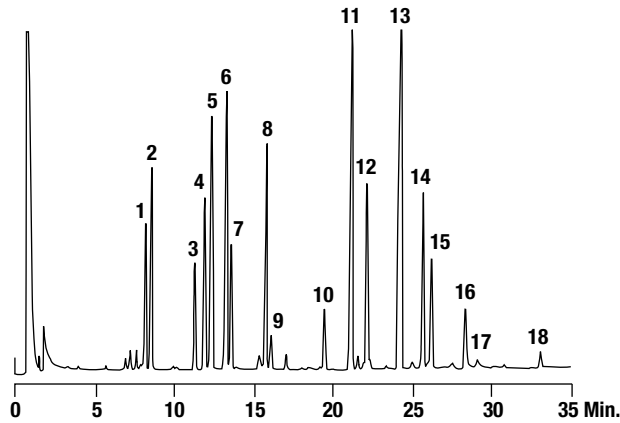


Amino Acids

N(O,S)-Heptafluorobutyl-isobutyl Esters of Amino Acids from Soy Protein Hydrolysate

CHROM
1241



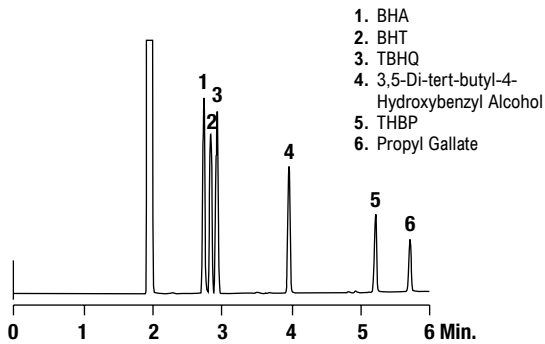
- | | |
|---------------|-------------------|
| 1. Alanine | 10. Methionine |
| 2. Glycine | 11. Aspartic Acid |
| 3. Valine | 12. Phenylalanine |
| 4. Threonine | 13. Glutamic Acid |
| 5. Serine | 14. Lysine |
| 6. Leucine | 15. Tyrosine |
| 7. Isoleucine | 16. Arginine |
| 8. Proline | 17. Histidine |
| 9. Cystine | 18. Tryptophan |

Column: Heliflex® AT™-Amino Acid, 25m x 0.53mm x 1.20µm (Part No. 16864)
Temp: 80°C (2 min hold) to 230°C at 4°C/min
Carrier Gas: Helium at 10mL/min
Detector: FID

Antioxidants

Phenolic Antioxidants

CHROM
2264



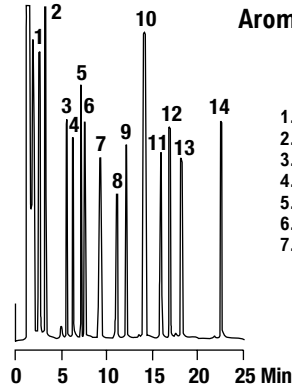
1. BHA
2. BHT
3. TBHQ
4. 3,5-Di-tert-butyl-4-Hydroxybenzyl Alcohol
5. THBP
6. Propyl Gallate

Column: Heliflex® AT™-5, 30m x 0.25mm x 0.25µm (Part No. 13656)
Temp: 220°C (3 min hold) to 265°C at 15°C/min
Carrier Gas: Helium at 0.74mL/min
Detector: FID

Essential Oils

Aroma Test Mix

CHROM
1304

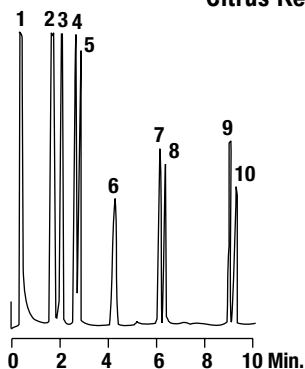


- | | |
|----------------------------|-----------------------|
| 1. <i>trans</i> -2-Hexenal | 8. Pentadecane |
| 2. <i>p</i> -Cymene | 9. Linalool |
| 3. <i>cis</i> -3-Hexenol | 10. Acetophenone |
| 4. <i>trans</i> -2-Hexenol | 11. Carvone |
| 5. Ethyl Octanoate | 12. Hexadecane |
| 6. 1-Octene-3-ol | 13. Methyl Salicylate |
| 7. Benzaldehyde | 14. Benzyl Alcohol |

Column: Heliflex® AT™-1000, 10m x 0.25mm x 0.20µm (Part No. 972510)
Temp: 50°C to 120°C at 3°C/min
Carrier Gas: Hydrogen at 2.5mL/min
Detector: FID

Essential Oils

Citrus Reference Mix

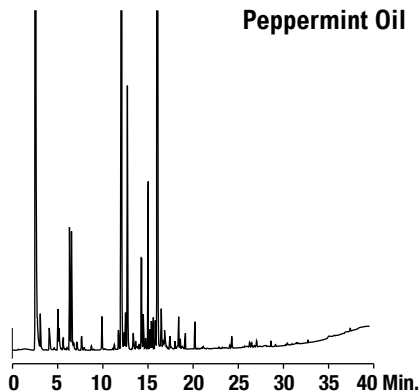


1. α -Pinene
2. Camphene
3. β -Pinene
4. *p*-Cymene
5. Limonene
6. Nonanal + Linalool
7. Terpen-4-ol
8. γ -Terpineol
9. Neryl Acetate
10. Geranyl Acetate

CHROM
1311

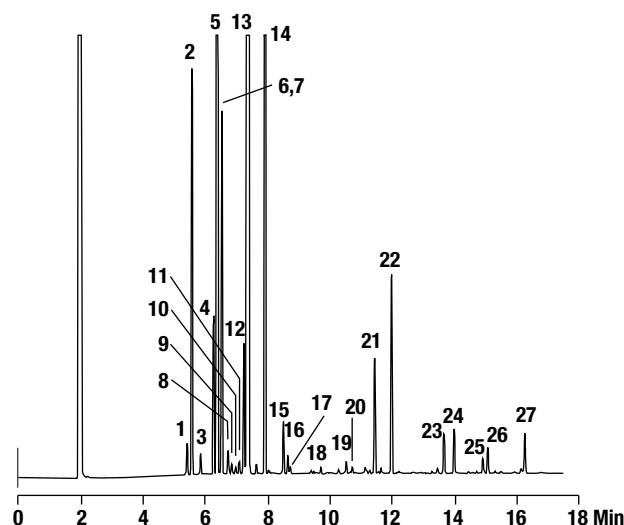
Column: Heliflex® AT™-1, 10m x 0.53mm x 1.20 μ m
(Part No. 935110)
Temp: 75°C (5 min hold) to 150°C at 10°C/min
Carrier Gas: Helium at 5mL/min
Detector: FID

Peppermint Oil

CHROM
2529

Column: Heliflex® AT™-AquaWax, 30m x 0.25mm x 0.25 μ m
(Part No. 12437)
Temp: 75°C to 260°C at 5°C/min
Carrier Gas: Helium at 22cm/sec
Detector: FID

Lemon Oil

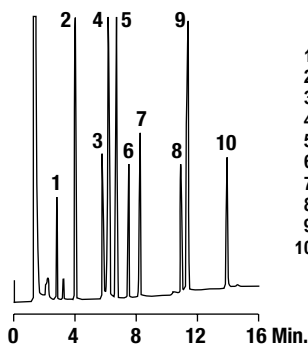
CHROM
2288

- | | |
|----------------------------|--|
| 1. α -Thujene | 15. Terpineol |
| 2. α -Pinene | 16. Linalool |
| 3. Camphene | 17. Nonanal |
| 4. Sabinene | 18. Citronellal |
| 5. β -Pinene | 19. Terpinen-4-ol |
| 6. 6-Methyl-5-hepten-2-one | 20. α -Terpineol |
| 7. Myrcene | 21. Neral |
| 8. Octanol | 22. Gerinal |
| 9. α -Phellandrene | 23. Neryl Acetate |
| 10. 3-Carene | 24. Geranyl Acetate |
| 11. α -Terpinene | 25. β -Caryophyllene |
| 12. <i>p</i> -Cymene | 26. <i>trans</i> - α -Bergamotene |
| 13. Limonene | 27. β -Bisabolene |
| 14. γ -Terpinene | |

Column: Heliflex® AT™-5, 30m x 0.25mm x 0.25 μ m
(Part No. 13656)
Temp: 70°C (2 min hold) to 200°C at 8°C/min
Carrier Gas: Helium at 0.8mL/min
Detector: FID

FAMES

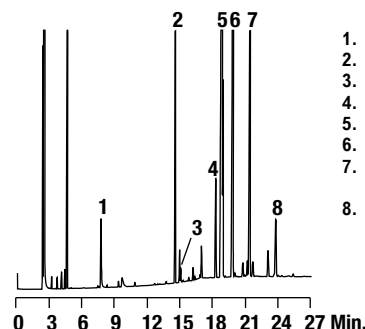
C14:0-C24:0 Fatty Acid Methyl Esters

CHROM
1317

1. Methyl Myristate (C14:0)
2. Methyl Palmitate (C16:0)
3. Methyl Stearate (C18:0)
4. Methyl Oleate (C18:1 *cis*)
5. Methyl Linoleate (C18:2 *cis,cis*)
6. Methyl Linolenate (C18:3 *cis,cis,cis*)
7. Methyl Arachidate (C20:0)
8. Methyl Behenate (C22:0)
9. Methyl Erucate (C22:1 *cis*)
10. Methyl Lignocerate (C24:0)

Column: Heliflex® AT™-Wax, 25m x 0.25mm x 0.20 μ m
(Part No. 9925252)
Temp: 180°C to 240°C at 5°C/min
Carrier Gas: Hydrogen at 0.8mL/min
Detector: FID

Canola Oil

CHROM
2333

1. Methyl Myristate (C14:0)
2. Methyl Palmitate (C16:0)
3. Methyl Palmitoleate (C16:1 *cis*)
4. Methyl Stearate (C18:0)
5. Methyl Oleate (C18:1 *cis*)
6. Methyl Linoleate (C18:2 *cis,cis*)
7. Methyl Linolenate (C18:3 *cis,cis,cis*)
8. Methyl Arachidate (C20:0)

Column: Econo-Cap™ EC™-Wax, 30m x 0.25mm x 0.25 μ m
(Part No. 19655)
Temp: 150°C (2 min hold) to 225°C at 5°C/min
Carrier Gas: Helium at 0.68mL/min
Detector: FID

more applications

View our complete searchable chromatogram database at www.discoverysciences.com/chromdb/