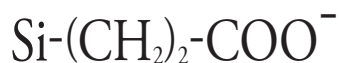


Ion Exchange Silica

InertSep™ CBA (Carboxyethyl Substituted Silica Gel)

InertSep CBA is a silica gel based solid phase with a carboxyl ethyl functional group. The primary interaction is cation exchange, with a weaker combined secondary non-polar and polar interaction. InertSep CBA is particularly useful for the extraction of pharmaceutical compounds etc. that have a strong cation, such as those with an amine group.



Application

- Strongly cationic compounds

Standard Cartridge

Item Name	Column Size	Quantity	Cat.No.
InertSep CBA	50 mg/1 mL	100 pieces	5010-61500
	100 mg/1 mL	100 pieces	5010-61501
	200 mg/3 mL	50 pieces	5010-61502
	250 mg/3 mL	50 pieces	5010-61509
	500 mg/3 mL	50 pieces	5010-61503
	250 mg/6 mL	30 pieces	5010-61510
	500 mg/6 mL	30 pieces	5010-61504
	1 g/6 mL	30 pieces	5010-61505
	2 g/12 mL	20 pieces	5010-61506

Standard Cartridge (High Volume Cartridge)

Item Name	Column Size	Quantity	Cat.No.
InertSep CBA	5 g/20 mL	20 pieces	5010-61507
	10 g/60 mL	16 pieces	5010-61508

Large Cartridge LSC

Item Name	Column Size	Quantity	Cat.No.
InertSep LSC CBA	100 mg	50 pieces	5010-63501
	200 mg	50 pieces	5010-63502
	500 mg	50 pieces	5010-63503

Luer Device

Item Name	Column Size	Quantity	Cat.No.
InertSep SlimJ CBA	500 mg	50 pieces	5010-65500
	1000 mg	50 pieces	5010-65501

96-Well Plate

Item Name	Column Size	Quantity	Cat.No.
InertSep 96WP CBA	50 mg	1 piece	5010-66400
	100 mg	1 piece	5010-66401

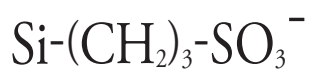
Bulk Material For Solid Phase Extraction

Item Name	Mean Particle Diameter	Weight	Cat.No.
InertSep CBA	45 μm	100 g	5010-69017

Ion Exchange Silica

InertSep™ PRS (Propylsulfonyl Substitued Silica Gel)

InertSep PRS is a silica gel based solid phase that has a propyl-sulfonyl functional group. The primary interaction is cation exchange, with a weaker combined secondary non-polar and polar interaction. In addition, in low polarity solvents it offers polar interaction and also hydrogen bond interaction.



Application

- Weakly basic compounds in aqueous solution

Standard Cartridge

Item Name	Column Size	Quantity	Cat. No.
InertSep PRS	50 mg/1 mL	100 pieces	5010-61520
	100 mg/1 mL	100 pieces	5010-61521
	200 mg/3 mL	50 pieces	5010-61522
	500 mg/3 mL	50 pieces	5010-61523
	500 mg/6 mL	30 pieces	5010-61524
	1 g/6 mL	30 pieces	5010-61525
	2 g/12 mL	20 pieces	5010-61526

Standard Cartridge (High Volume Cartridge)

Item Name	Column Size	Quantity	Cat. No.
InertSep PRS	5 g/20 mL	20 pieces	5010-61527
	10 g/60 mL	16 pieces	5010-61528

Large Cartridge LSC

Item Name	Column Size	Quantity	Cat. No.
InertSep LSC PRS	100 mg	50 pieces	5010-63521
	200 mg	50 pieces	5010-63522
	500 mg	50 pieces	5010-63523

Luer Device

Item Name	Column Size	Quantity	Cat. No.
InertSep SlimJ PRS	500 mg	50 pieces	5010-65520
	1000 mg	50 pieces	5010-65521

96-Well Plate

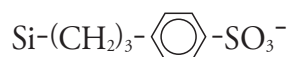
Item Name	Column Size	Quantity	Cat. No.
InertSep 96WP PRS	50 mg	1 piece	5010-66410
	100 mg	1 piece	5010-66411

Bulk Material For Solid Phase Extraction

Item Name	Mean Particle Diameter	Weight	Cat. No.
InertSep PRS	45 μm	100 g	5010-69018

InertSep™ SCX (Benzene Sulfonyl Propyl Substituted Silica Gel)

InertSep SCX is a silica gel based solid phase with a benzene sulfonyl propyl functional group. Primary function is a combination of both non-polar and strong cation exchange interactions. In addition, it possesses a less significant polar interaction. Because the non-polar interaction is stronger than for PRS material, InertSep SCX is suitable for samples which require the additional selectivity offered by a combination of two surface characteristics - cation exchange and non-polar interaction.



Application

- Levamisole
- Malachite green
- Weakly basic compounds in aqueous solution

Standard Cartridge

Item Name	Column Size	Quantity	Cat.No.
InertSep SCX	50 mg/1 mL	100 pieces	5010-61540
	100 mg/1 mL	100 pieces	5010-61541
	200 mg/3 mL	50 pieces	5010-61542
	500 mg/3 mL	50 pieces	5010-61543
	500 mg/6 mL	30 pieces	5010-61544
	1 g/6 mL	30 pieces	5010-61545
	2 g/12 mL	20 pieces	5010-61546

Standard Cartridge (High Volume Cartridge)

Item Name	Column Size	Quantity	Cat.No.
InertSep SCX	5 g/20 mL	20 pieces	5010-61547
	10 g/60 mL	16 pieces	5010-61548
	20 g/60 mL	16 pieces	5010-61549
	25 g/150 mL	8 pieces	5010-61550
	50 g/150 mL	8 pieces	5010-61551
	70 g/150 mL	8 pieces	5010-61552

Large Cartridge LSC

Item Name	Column Size	Quantity	Cat.No.
InertSep LSC SCX	100 mg	50 pieces	5010-63541
	200 mg	50 pieces	5010-63542
	500 mg	50 pieces	5010-63543

Luer Device

Item Name	Column Size	Quantity	Cat.No.
InertSep SlimJ SCX	500 mg	50 pieces	5010-65540
	1000 mg	50 pieces	5010-65541

96-Well Plate

Item Name	Column Size	Quantity	Cat.No.
InertSep 96WP SCX	50 mg	1 piece	5010-66420
	100 mg	1 piece	5010-66421

Bulk Material For Solid Phase Extraction

Item Name	Mean Particle Diameter	Weight	Cat.No.
InertSep SCX	45 μm	100 g	5010-69019

Ion Exchange Silica

InertSep™ NH2 (Amino Propyl Substituted Silica Gel)

InertSep NH2 is a solid phase with an amino-propyl functional group. Anion exchange and polar interaction are combined as a primary interaction. As a secondary interaction, it has a weak non-polar interaction combined with anion exchange. Similarly, to normal phase separation using Si - 2OH interaction, InertSep NH2 can be used for the separation of structural isomers.



Application

- Pigment removal
- Fatty acid removal
- PCB (clean-up)
- Strongly acidic compounds in aqueous solution
- Purification of organic compounds in normal phase mode

Standard Cartridge

Item Name	Column Size	Quantity	Cat. No.
InertSep NH2	50 mg/1 mL	100 pieces	5010-61600
	100 mg/1 mL	100 pieces	5010-61601
	200 mg/3 mL	50 pieces	5010-61602
	500 mg/3 mL	50 pieces	5010-61603
	500 mg/6 mL	30 pieces	5010-61604
	1 g/6 mL	30 pieces	5010-61605
	2 g/12 mL	20 pieces	5010-61606

Standard Cartridge (High Volume Cartridge)

Item Name	Column Size	Quantity	Cat. No.
InertSep NH2	5 g/20 mL	20 pieces	5010-61607
	10 g/60 mL	16 pieces	5010-61608
	20 g/60 mL	16 pieces	5010-61609
	25 g/150 mL	8 pieces	5010-61610
	50 g/150 mL	8 pieces	5010-61611
	70 g/150 mL	8 pieces	5010-61612

Large Cartridge LSC

Item Name	Column Size	Quantity	Cat. No.
InertSep LSC NH2	100 mg	50 pieces	5010-63601
	200 mg	50 pieces	5010-63602
	500 mg	50 pieces	5010-63603

Luer Device

Item Name	Column Size	Quantity	Cat. No.
InertSep SlimJ NH2	500 mg	50 pieces	5010-65600
	1000 mg	50 pieces	5010-65601
InertSep Slim NH2	360 mg	50 pieces	5010-65605

96-Well Plate

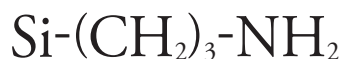
Item Name	Column Size	Quantity	Cat. No.
InertSep 96WP NH2	50 mg	1 piece	5010-66600
	100 mg	1 piece	5010-66601

Bulk Material For Solid Phase Extraction

Item Name	Mean Particle Diameter	Weight	Cat. No.
InertSep NH2	60 μm	100 g	5010-69020

InertSep™ NH2 FF (Amino Propyl Substituted Silica Gel)

InertSep NH2 FF is a high flow version of InertSep NH2. It is suitable for use with samples whose viscosity is high.



Application

- Pigment removal
- Fatty acid removal
- PCB (clean up)
- Strongly acidic compounds in aqueous solution
- Purification of organic compounds in normal phase mode

Standard Cartridge

Item Name	Column Size	Quantity	Cat. No.
InertSep NH2 FF	50 mg/1 mL	100 pieces	5010-62600
	100 mg/1 mL	100 pieces	5010-62601
	200 mg/3 mL	50 pieces	5010-62602
	500 mg/3 mL	50 pieces	5010-62603
	500 mg/6 mL	30 pieces	5010-62604
	1 g/6 mL	30 pieces	5010-62605
	2 g/12 mL	20 pieces	5010-62606

Standard Cartridge (High Volume Cartridge)

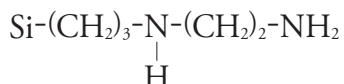
Item Name	Column Size	Quantity	Cat. No.
InertSep NH2 FF	5 g/20 mL	20 pieces	5010-62607
	10 g/60 mL	16 pieces	5010-62608

Bulk Material For Solid Phase Extraction

Item Name	Mean Particle Diameter	Weight	Cat. No.
InertSep NH2 FF	120 μm	100 g	5010-69031

InertSep™ PSA (Ethylene Diamine - N- Propyl Substituted Silica Gel)

InertSep PSA is a silica gel based solid phase with an ethylene-diamine - N- propyl functional group. The primary interaction is a combination of both anion exchange and polarity.



Application

- Pigment removal
- Fatty acid removal
- Strongly acidic compounds in aqueous solution

Standard Cartridge

Item Name	Column Size	Quantity	Cat.No.
InertSep PSA	50 mg/1 mL	100 pieces	5010-61620
	100 mg/1 mL	100 pieces	5010-61621
	200 mg/3 mL	50 pieces	5010-61622
	500 mg/3 mL	50 pieces	5010-61623
	500 mg/6 mL	30 pieces	5010-61624
	1 g/6 mL	30 pieces	5010-61625
	2 g/12 mL	20 pieces	5010-61626

Standard Cartridge (High Volume Cartridge)

Item Name	Column Size	Quantity	Cat.No.
InertSep PSA	5 g/20 mL	20 pieces	5010-61627
	10 g/60 mL	16 pieces	5010-61628

Large Cartridge LSC

Item Name	Column Size	Quantity	Cat.No.
InertSep LSC PSA	100 mg	50 pieces	5010-63621
	200 mg	50 pieces	5010-63622
	500 mg	50 pieces	5010-63623

Luer Device

Item Name	Column Size	Quantity	Cat.No.
InertSep SlimJ PSA	500 mg	50 pieces	5010-65620
	1000 mg	50 pieces	5010-65621

96-Well Plate

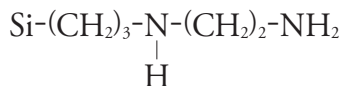
Item Name	Column Size	Quantity	Cat.No.
InertSep 96WP PSA	50 mg	1 piece	5010-66610
	100 mg	1 piece	5010-66611

Bulk Material For Solid Phase Extraction

Item Name	Mean Particle Diameter	Weight	Cat.No.
InertSep PSA	60 μm	100 g	5010-69021

InertSep™ PSA FF (Ethylene Diamine - N- Propyl Substituted Silica Gel)

InertSep PSA FF is a high flow version of InertSep PSA. It is suitable for the pretreatment of high viscosity crop extracts for the cleanup of agrochemicals.



Application

- Pigment removal
- Fatty acid removal
- Strongly acidic compounds in aqueous solution

Standard Cartridge

Item Name	Column Size	Quantity	Cat.No.
InertSep PSA FF	50 mg/1 mL	100 pieces	5010-62620
	100 mg/1 mL	100 pieces	5010-62621
	200 mg/3 mL	50 pieces	5010-62622
	500 mg/3 mL	50 pieces	5010-62623
	500 mg/6 mL	30 pieces	5010-62624
	1 g/6 mL	30 pieces	5010-62625
	2 g/12 mL	20 pieces	5010-62626

Standard Cartridge (High Volume Cartridge)

Item Name	Column Size	Quantity	Cat.No.
InertSep PSA FF	5 g/20 mL	20 pieces	5010-62627
	10 g/60 mL	16 pieces	5010-62628

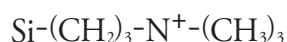
Bulk Material For Solid Phase Extraction

Item Name	Mean Particle Diameter	Weight	Cat.No.
InertSep PSA FF	120 μm	100 g	5010-69032

Ion Exchange Silica

InertSep™ SAX (Tri-methyl Amino Propyl Substituted Silica Gel)

InertSep SAX is a silica gel based solid phase with a tri-methyl amino propyl functional group. Primary interaction is very strong anion exchange Secondary interaction is a combination of a weak polar and non-polar interaction. It is generally used for the extraction of weak anions such as carboxylic acid.



Application

- Pigment removal
- Fatty acid removal
- Weakly acidic compounds in aqueous solution

Standard Cartridge

Item Name	Column Size	Quantity	Cat. No.
InertSep SAX	50 mg/1 mL	100 pieces	5010-61640
	100 mg/1 mL	100 pieces	5010-61641
	200 mg/3 mL	50 pieces	5010-61642
	500 mg/3 mL	50 pieces	5010-61643
	500 mg/6 mL	30 pieces	5010-61644
	1 g/6 mL	30 pieces	5010-61645
	2 g/12 mL	20 pieces	5010-61646

Standard Cartridge (High Volume Cartridge)

Item Name	Column Size	Quantity	Cat. No.
InertSep SAX	5 g/20 mL	20 pieces	5010-61647
	10 g/60 mL	16 pieces	5010-61648
	20 g/60 mL	16 pieces	5010-61649
	25 g/150 mL	8 pieces	5010-61650
	50 g/150 mL	8 pieces	5010-61651
	70 g/150 mL	8 pieces	5010-61652

Large Cartridge LSC

Item Name	Column Size	Quantity	Cat. No.
InertSep LSC SAX	100 mg	50 pieces	5010-63641
	200 mg	50 pieces	5010-63642
	500 mg	50 pieces	5010-63643

Luer Device

Item Name	Column Size	Quantity	Cat. No.
InertSep SlimJ SAX	500 mg	50 pieces	5010-65640
	1000 mg	50 pieces	5010-65641

96-Well Plate

Item Name	Column Size	Quantity	Cat. No.
InertSep 96WP SAX	50 mg	1 piece	5010-66620
	100 mg	1 piece	5010-66621

Bulk Material For Solid Phase Extraction

Item Name	Mean Particle Diameter	Weight	Cat. No.
InertSep SAX	45 μm	100 g	5010-69022

InertSep™ SAX/PSA (Tri-Methyl Amino Propyl Substituted Silica Gel/ Ethylene Diamine - N- Propyl Substituted Silica Gel)

InertSep SAX/PSA is two layer solid phase extraction cartridge with both SAX and PSA. It is used specifically where the polar interaction is ideal for agrochemical compounds that are often difficult to remove from crop samples.

Application

- Weak chlorophyll removal
- Pigment removal
- Fatty acid removal

Standard Cartridge

Item Name	Column Size	Quantity	Cat. No.
InertSep SAX/PSA	250 mg/250 mg/3 mL	50 pieces	5010-68100
	500 mg/500 mg/6 mL	30 pieces	5010-68101

Standard Cartridge (High Volume Cartridge)

Item Name	Mean Particle Diameter	Weight	Cat. No.
InertSep SAX/PSA	500 mg/500 mg/20 mL	20 pieces	5010-68104
	1 g/1 g/20 mL	20 pieces	5010-68105