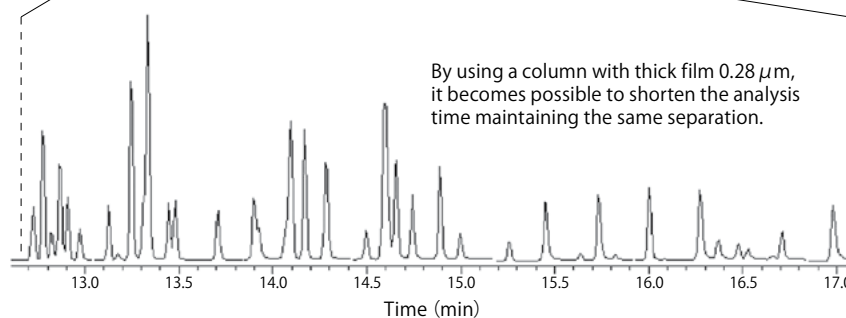
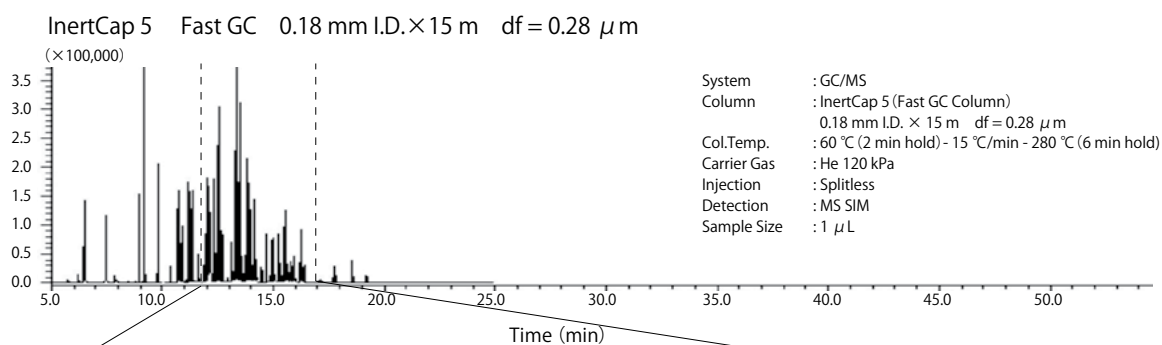
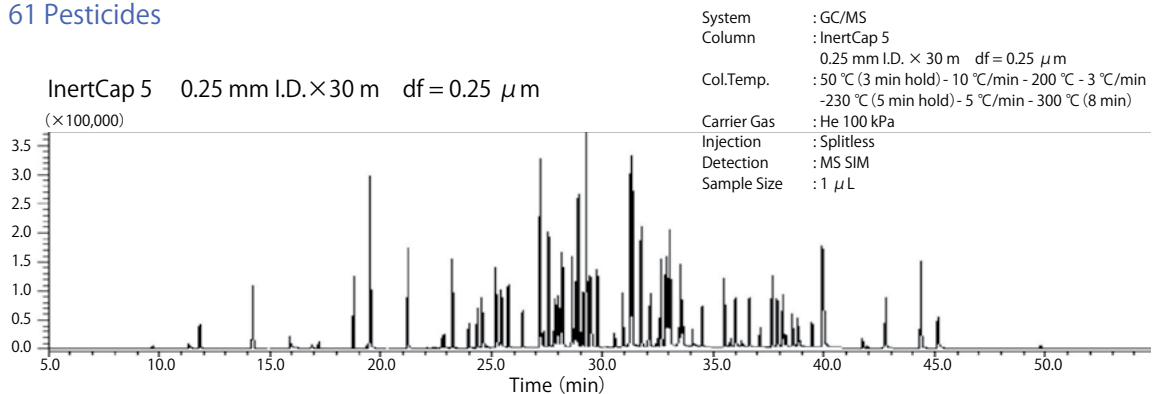


InertCap™ Fast GC Column

InertCap Fast GC is a column of ID 0.18 mm. Maintaining separation ability, InertCap Fast GC realizes fast analyses and best productivity with the existing general GC instruments.

61 Pesticides



※See page 51-52 for InertCap Fast GC applications.

【InertCap™ Fast GC Column】

Phase	ID (mm)	Length (m)	Thickness (μm)	Max. Temperature (°C)	Cat.No.
InertCap 1	0.18	15	0.18	iso.325-prog.350	1010-11021
			0.28		1010-11022
		20	0.18	iso.325-prog.350	1010-11031
			0.28		1010-11032
InertCap 5MS/Sil	0.18	20	0.18	iso.325-prog.350	1010-15031
InertCap 5	0.18	15	0.18	iso.325-prog.350	1010-18021
			0.28		1010-18022
		20	0.18	iso.325-prog.350	1010-18031
			0.28		1010-18032

※Other phases available upon request.

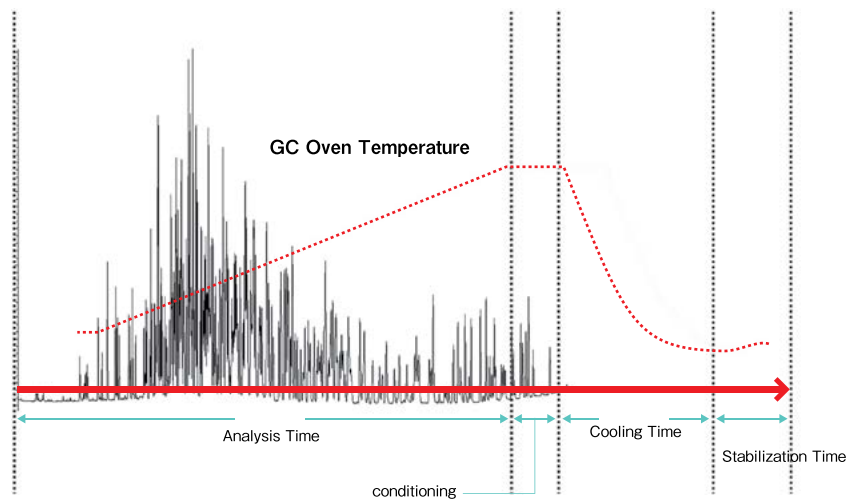
InertCap™ Fast GC Column

Effectiveness of InertCap Fast GC Column

Reducing the cost of GC, GC/MS

With InertCap Fast GC columns, it takes only half of what it used to take for pesticides analyses. Numbers of samples can be analyzed by using existing general GC instruments together with InertCap Fast GC columns. There is no need for special high pressure injector and anyone can easily use the column.

Pesticides



Downsizing Example

0.25 mm I.D. × 30 m df = 0.25 μm



0.18 mm I.D. × 20 m df = 0.18 μm

0.25 mm I.D. × 30 m df = 0.40 μm



0.18 mm I.D. × 20 m df = 0.28 μm

