

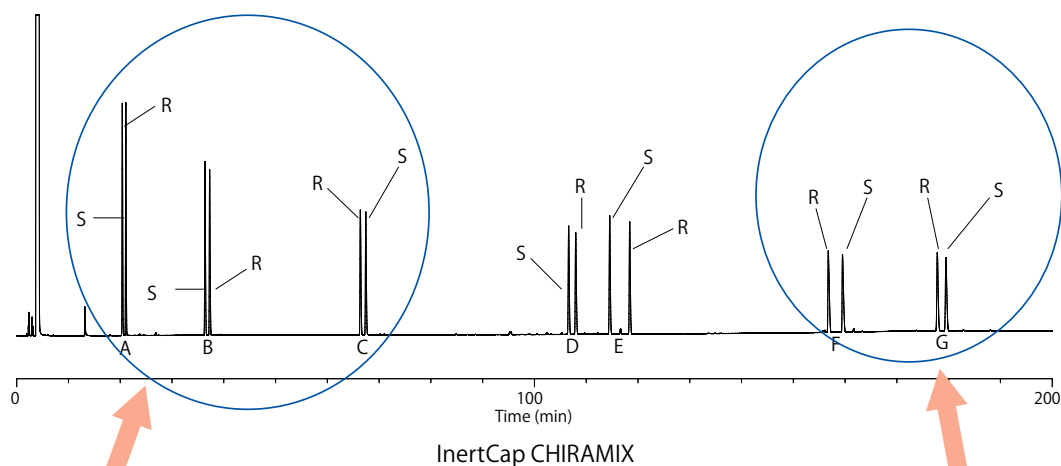
# InertCap CHIRAMIX™

- Excellent for enantiomers separation
- Coated with more than 2 kinds of cyclodextrin derivatives
- Sharp peaks
- GL Sciences'original

InertCap CHIRAMIX is a specialized column for enantiomer analyses coated with a mixture consisting of more than 2 kinds of cyclodextrin derivatives. Compared to existing columns that is coated by only 1 kind of cyclodextrin, InertCap CHIRAMIX can effectively analyze wide range of compounds in a short time as the 1st choice column.

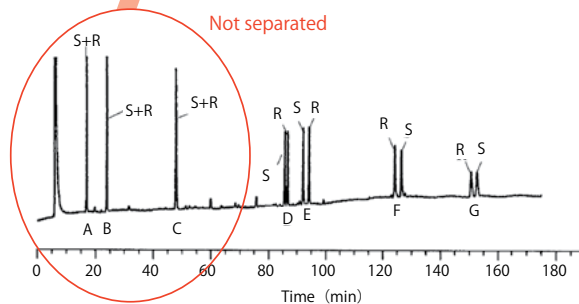
※InertCap CHIRAMIX was jointly developed with T. Hasegawa Co., Ltd.  
 ※CHIRAMIX is a brand name of T. Hasegawa Co., Ltd.

## Enantiomer Analysis

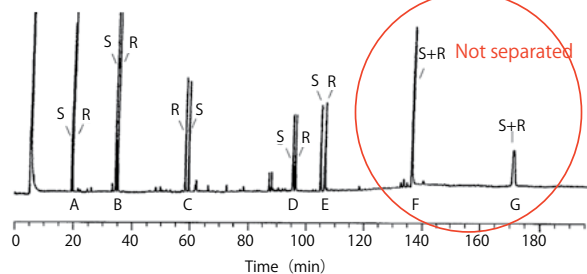


System : GC  
 Col. Temp. : 60 °C - 0.7 °C/min - 180 °C (50 min hold)  
 Carrier Gas : He 70 kPa  
 Injection : Split 1:50  
 Detection : FID  
 Sample Size : 0.4 μL

A : α-pinene  
 B : limonene  
 C : linalool  
 D : α-damascone  
 E : α-ionone  
 F : δ-jasmine lactone  
 G : γ-dodeca lactone



Not separated



Not separated

## 【InertCap CHIRAMIX™】

ID (mm)	Length (m)	Thickness (μm)	Max. Temperature (°C)	Cat.No.
0.25	30	0.25	iso.180-prog.200	1010-69142