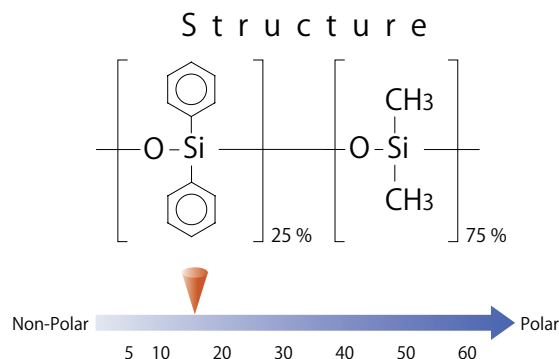


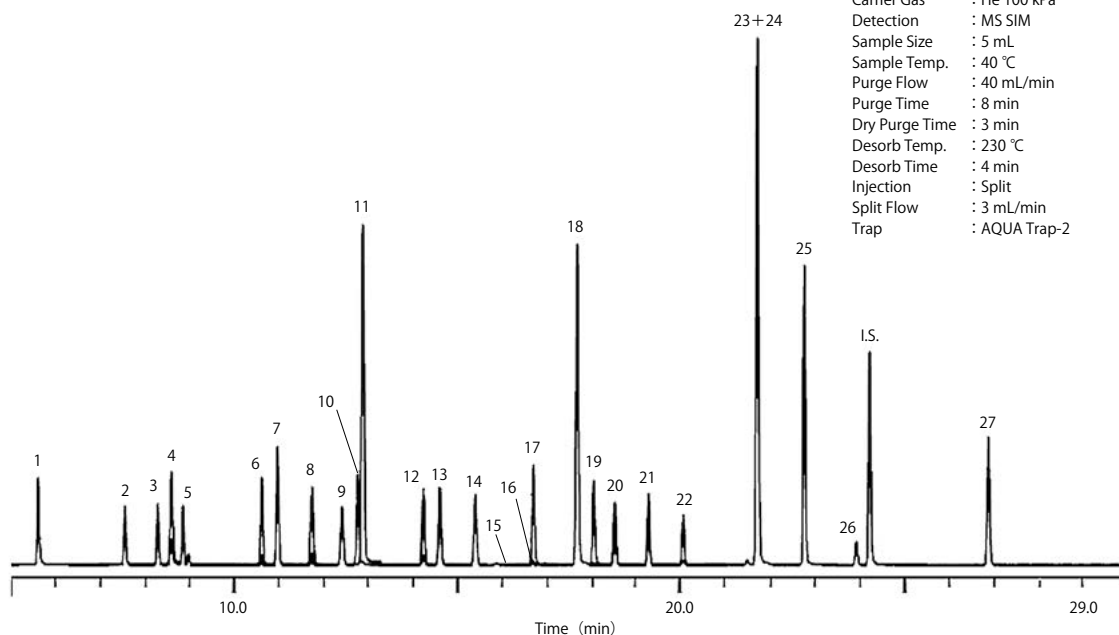
AQUATIC

- 25 % Phenyl-75 % Methylpolysiloxane
- USP Phase G28
- Medium polar
- Cross-Linked
- No Equivalent

AQUATIC is a medium polar column incorporating 25 % phenyl and 75 % methylpolysiloxane, especially designed for the analyses of volatile organic compounds in water. As the column polarity is optimized, AQUATIC enables high separations. Analysis data with 33 compounds is attached to every column, and each column is guaranteed for its performance and reproducibility. AQUATIC is optimal for VOCs simultaneous analyses by Purge and Trap.



■ Volatile compounds in water



System : GC/MS P&T
 Column : AQUATIC
 0.25 mm I.D. × 60 m df = 1.0 μm
 Col. Temp. : 40 °C (1 min hold) - 4 °C/min - 100 °C
 - 10 °C/min - 200 °C (5 min hold)
 Carrier Gas : He 100 kPa
 Detection : MS SIM
 Sample Size : 5 mL
 Sample Temp. : 40 °C
 Purge Flow : 40 mL/min
 Purge Time : 8 min
 Dry Purge Time : 3 min
 Desorb Temp. : 230 °C
 Desorb Time : 4 min
 Injection : Split
 Split Flow : 3 mL/min
 Trap : AQUA Trap-2

- | | | | |
|-------------------------------------|--------------------------|---------------------------------------|-----------------------------------|
| 1. Vinyl chloride | 8. 1,1,1-Trichloroethane | 15. 1,4-Dioxane | 22. Dibromochloromethane |
| 2. 1,1-Dichloroethene | 9. Carbon tetrachloride | 16. Epichlorohydrin | 23. <i>m</i> -Xylene |
| 3. Dichloromethane | 10. 1,2-Dichloroethane | 17. <i>cis</i> -1,3-Dichloropropene | 24. <i>p</i> -Xylene |
| 4. MTBE | 11. Benzene | 18. Toluene | 25. <i>o</i> -Xylene |
| 5. <i>trans</i> -1,2-Dichloroethene | 12. Trichloroethene | 19. <i>trans</i> -1,3-Dichloropropene | 26. Bromoform |
| 6. <i>cis</i> -1,2-Dichloroethene | 13. 1,2-Dichloropropane | 20. 1,1,2-Trichloroethane | I.S. <i>p</i> -Bromofluorobenzene |
| 7. Chloroform | 14. Bromodichloromethane | 21. Tetrachloroethene | 27. <i>p</i> -Dichlorobenzene |

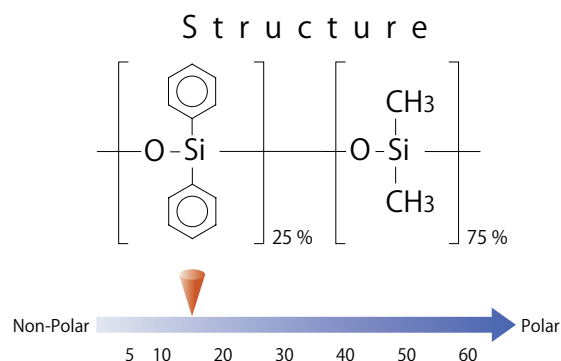
[AQUATIC]

| ID (mm) | Length (m) | Thickness (μm) | Max. Temperature (°C) | Cat.No. |
|---------|------------|----------------|-----------------------|------------|
| 0.25 | 60 | 1.00 | iso.200-prog.220 | 1010-29165 |
| 0.32 | 60 | 1.40 | iso.200-prog.220 | 1010-29266 |
| 0.53 | 75 | 2.00 | iso.200-prog.220 | 1010-29477 |

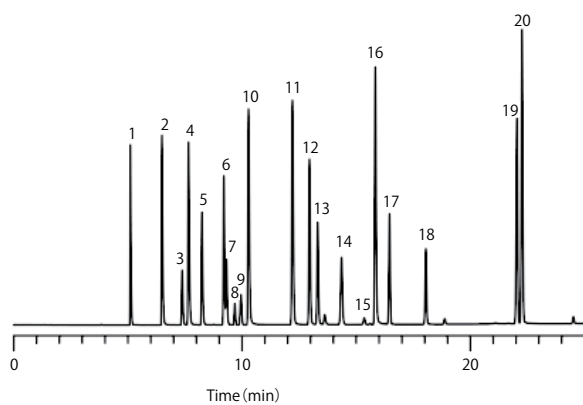
AQUATIC-2

- 25% Phenyl -75% Methylpolysiloxane
- USP Phase G28
- Medium polar
- Cross-Liked
- No Equivalent

AQUATIC-2 endures up to 260 °C. Separation pattern is almost same as AQUATIC. Selectivity to a few compounds may be slightly differ from the AQUATIC.



Solvents



- | | | | | |
|-----------------|--------------------|------------------------|-------------------------|------------------------|
| 1. Methanol | 5. Acetone | 9. <i>n</i> -Hexane | 13. Ethylacetate | 17. 1,2-Dichloroethane |
| 2. Ethanol | 6. Acetonitrile | 10. <i>n</i> -Propanol | 14. Cyclohexane | 18. Trichloroethylene |
| 3. Diethylether | 7. Methylacetate | 11. 2-Butanol | 15. Carbontetrachloride | 19. Isobutylacetate |
| 4. 2-Propanol | 8. Dichloromethane | 12. MEK | 16. 1-Butanol | 20. Toluene |

System : GC/FID
 Column : AQUATIC-2
 0.25 mm I.D. × 60 m df = 1.4 μm
 Col. Temp. : 40 °C (5 min hold) - 4 °C/min - 120 °C - 10 °C/min - 250 °C
 Carrier Gas : He 200 kPa
 Injection : Split 1:80
 Detection : FID
 Sample Size : 1 μL

【 AQUATIC-2 】

| ID (mm) | Length (m) | Thickness (μm) | Max. Temperature (°C) | Cat.No. |
|---------|------------|----------------|-----------------------|------------|
| 0.25 | 30 | 1.40 | iso.260-prog.260 | 1010-19146 |
| | 60 | 1.40 | iso.260-prog.260 | 1010-19166 |
| 0.32 | 30 | 1.80 | iso.260-prog.260 | 1010-19247 |
| | 60 | 1.80 | iso.260-prog.260 | 1010-19267 |
| 0.53 | 30 | 3.00 | iso.260-prog.260 | 1010-19448 |
| | 75 | 3.00 | iso.260-prog.260 | 1010-19478 |