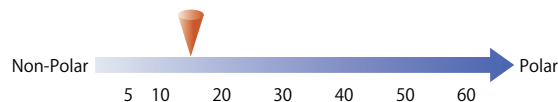
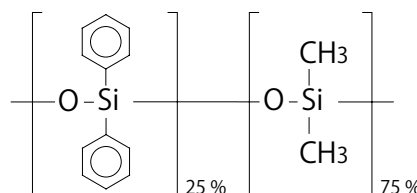


InertCap™ 25

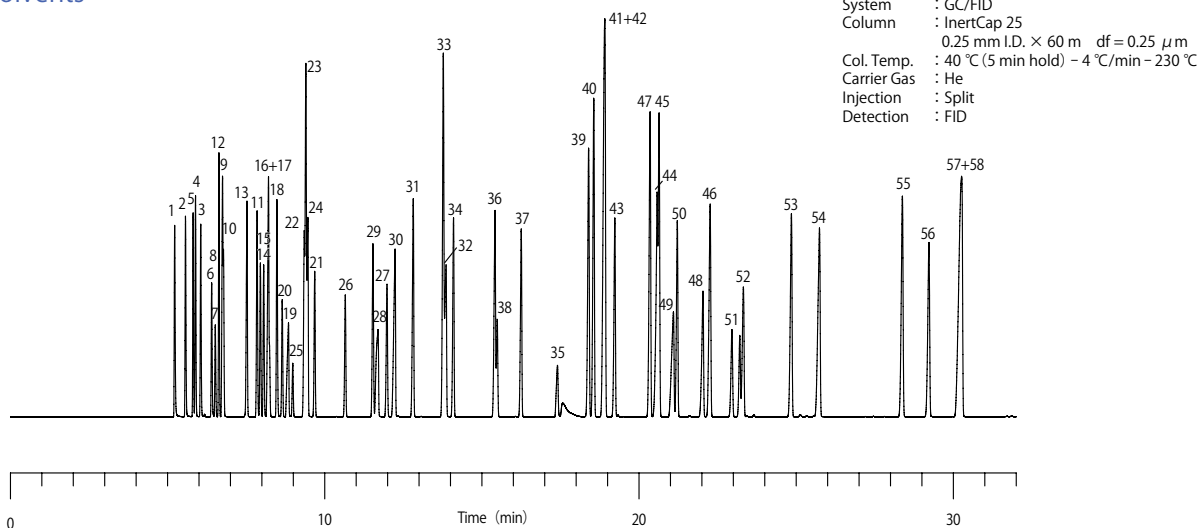
- 25 % Phenyl - 75 % Methylpolysiloxane
- USP Phase G28
- Medium Polar
- Cross-Linked
- No Equivalent

InertCap 25 is a medium polar column incorporating 25 % phenyl and 75 % methylpolysiloxane. With different selectivities compared to other medium polar columns, InertCap 25 is useful to identify and quantitate for a variety of analyses.

Structure



Solvents



- | | | | | |
|--|--------------------------------------|-----------------------------------|-----------------------------|-------------------------------|
| 1. Methanol | 13. 2-Butanol | 25. Carbon Tetrachloride | 37. <i>n</i> -Butyl acetate | 49. Butyl cellosolve |
| 2. Ethanol | 14. <i>cis</i> -1,2-Dichloroethylene | 26. Trichloroethylene | 38. Tetrachloroethylene | 50. <i>n</i> -Amyl acetate |
| 3. Acetone | 15. Ethyl acetate | 27. 1,4-Dioxane | 39. Chlorobenzene | 51. 1,1,2-tetrachloroethane |
| 4. <i>i</i> -Propanol | 16. Chloroform | 28. Ethyl cellosolve | 40. Ethylbenzene | 52. Methylcyclohexanol |
| 5. Ethyl ether | 17. <i>i</i> -Butanol | 29. <i>n</i> -Propyl acetate | 41. <i>m</i> -Xylene | 53. Methylcyclohexanone |
| 6. Methyl acetate | 18. Tetrahydrofuran | 30. <i>i</i> -Amyl alcohol | 42. <i>p</i> -Xylene | 54. Phenol |
| 7. Dichloromethane | 19. Methyl cellosolve | 31. Methyl <i>i</i> -butyl ketone | 43. <i>i</i> -Amyl acetate | 55. <i>o</i> -Dichlorobenzene |
| 8. Carbon disulfide | 20. 1,1,1-Trichloroethane | 32. <i>n</i> -Amyl alcohol | 44. Cyclohexanol | 56. <i>o</i> -Cresol |
| 9. <i>n</i> -Propanol | 21. 1,2-Dichloroethane | 33. Toluene | 45. Styrene | 57. <i>p</i> -Cresol |
| 10. <i>trans</i> -1,2-Dichloroethylene | 22. <i>i</i> -Propyl acetate | 34. <i>i</i> -Butyl acetate | 46. Cyclohexanone | 58. <i>m</i> -Cresol |
| 11. Methyl ethyl ketone | 23. Benzene | 35. <i>N,N</i> -Dimethylformamide | 47. <i>o</i> -Xylene | |
| 12. <i>n</i> -Hexane | 24. <i>n</i> -Butanol | 36. Methyl <i>n</i> -butyl ketone | 48. Cellosolve acetate | |

【InertCap™ 25】

ID (mm)	Length (m)	Thickness (μm)	Max. Temperature (°C)	Cat.No.
0.25	15	0.25	iso.280-prog.300	1010-62122
		0.50		1010-62124
		1.00		1010-62125
	30	0.25	iso.280-prog.300	1010-62142
		0.50		1010-62144
		1.00		1010-62145
	60	0.25	iso.280-prog.300	1010-62162
		0.50		1010-62164
		1.00		1010-62165

ID (mm)	Length (m)	Thickness (μm)	Max. Temperature (°C)	Cat.No.
0.32	15	0.25	iso.280-prog.300	1010-62222
		0.50		1010-62224
		1.00		1010-62225
	30	0.25	iso.280-prog.300	1010-62242
		0.50		1010-62244
		1.00		1010-62245
	60	0.25	iso.280-prog.300	1010-62262
		0.50		1010-62264
		1.00		1010-62265
0.53	15	1.00	iso.260-prog.280	1010-62425
	30	1.00	iso.260-prog.280	1010-62445