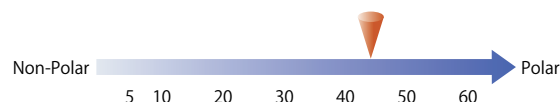
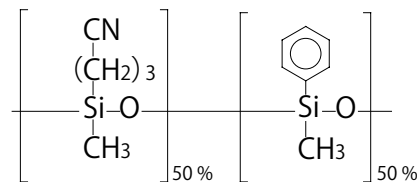


InertCap™ 225

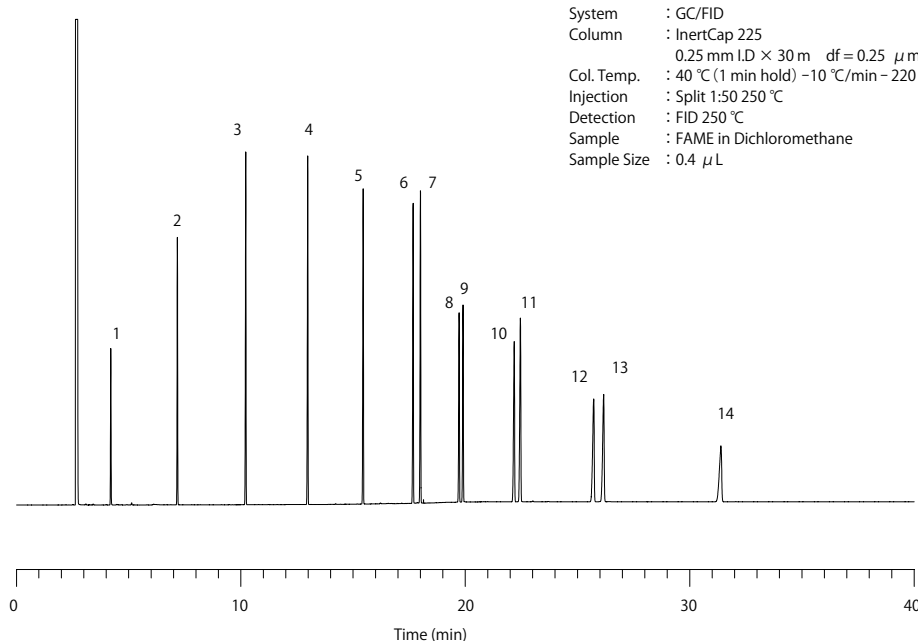
- 50 % Cyanopropylmethyl - 50 % Phenylmethylpolysiloxane
- USP Phase G19
- Medium Polar
- Cross-Linked
- Excellent separation for FAME
- Equivalent : DB-225, HP-225, Rtx-225, CP-Sil 43CB

InertCap 225 is a medium polar column incorporating 50 % cyanopropylmethyl and 50 % phenylmethylpolysiloxane. Cyano group contained in the liquid phase with triple bond retains compounds with high unsaturation degree strong by its dipole function. Therefore InertCap 225 is optimal for geometrical isomer analyses.

Structure



FAME (Fatty Acid Methyl Ester)



System : GC/FID
 Column : InertCap 225
 0.25 mm I.D × 30 m df = 0.25 μm
 Col. Temp. : 40 °C (1 min hold) - 10 °C/min - 220 °C (30 min hold)
 Injection : Split 1:50 250 °C
 Detection : FID 250 °C
 Sample : FAME in Dichloromethane
 Sample Size : 0.4 μL

- | | | |
|-----------------------|--------------------------|--------------------------------------|
| 1. Methyl Butanoate | 6. Methyl Tetradecanoate | 11. Methyl Oleate |
| 2. Methyl Hexanoate | 7. Methyl Myristoleate | 12. Methyl Eicosanoate |
| 3. Methyl Octanoate | 8. Methyl Hexadecanoate | 13. Methyl- <i>cis</i> -11-Eicoseate |
| 4. Methyl Decanoate | 9. Methyl Palmitelaidate | 14. Methyl Docosanoate |
| 5. Methyl Dodecanoate | 10. Methyl Octadecanoate | |

【 InertCap™ 225 】

| ID (mm) | Length (m) | Thickness (μm) | Max. Temperature (°C) | Cat.No. |
|---------|------------|----------------|-----------------------|------------|
| 0.25 | 30 | 0.25 | iso.220-prog.240 | 1010-66642 |
| 0.32 | 30 | 0.25 | iso.220-prog.240 | 1010-66742 |
| 0.53 | 30 | 0.50 | iso.220-prog.240 | 1010-66844 |