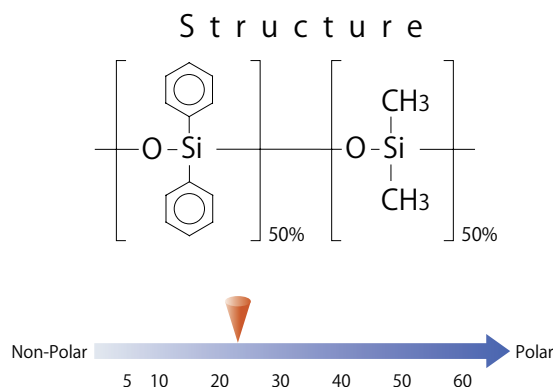


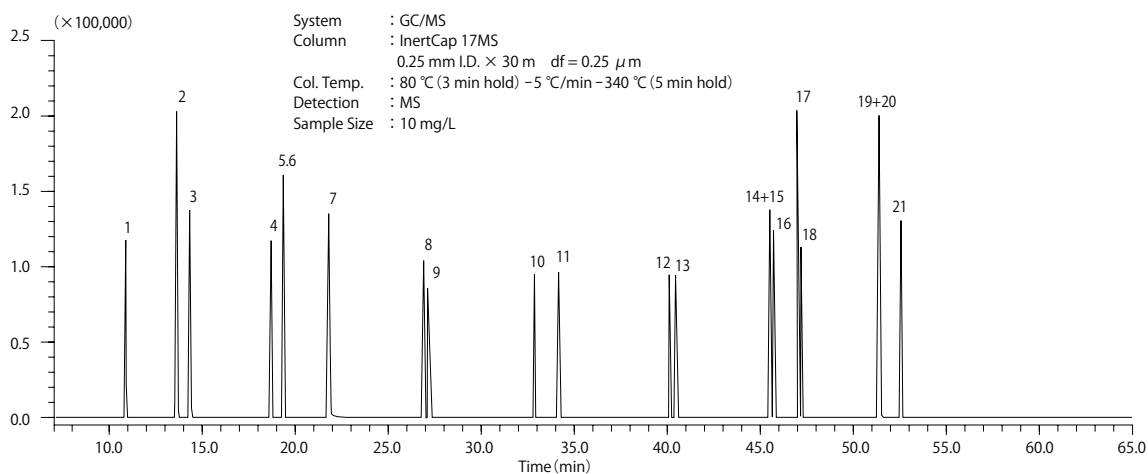
# InertCap™ 17MS

- 50 % Phenyl - 50 % Methylpolysiloxane
- USP Phase G3
- Medium Polar
- Cross-Linked
- Ultra Low Bleed
- Equivalent : DB-17ms, Rxi-17, VF-17ms, SPB-17

InertCap 17MS is a medium polar column incorporating 50 % phenyl and 50 % methylpolysiloxane, designed for GC/MS. InertCap 17MS realizes the world highest inertness and lowest bleeding, and is optimal for microanalyses such as pesticides analyses.



## Aromatic hydrocarbons



- |                        |                  |                          |                            |                            |
|------------------------|------------------|--------------------------|----------------------------|----------------------------|
| 1. Naphthalene         | 6. Biphenyl      | 11. Pyrene               | 16. Benzo[e]pyrene         | 21. Indeno[1,2,3-cd]pyrene |
| 2. 2-Methylnaphthalene | 7. Fluorene      | 12. Chrysene             | 17. Benzo[a]pyrene         |                            |
| 3. 1-Methylnaphthalene | 8. Phenanthrene  | 13. Benzo[a]anthracene   | 18. Benzo[j]fluoranthene   |                            |
| 4. Acenaphthylene      | 9. Anthracene    | 14. Benzo[b]fluoranthene | 19. Dibenzo[a,h]anthracene |                            |
| 5. Acenaphthene        | 10. Fluoranthene | 15. Benzo[k]fluoranthene | 20. Benzo[g,h,i]perylene   |                            |

## 【InertCap™ 17MS】

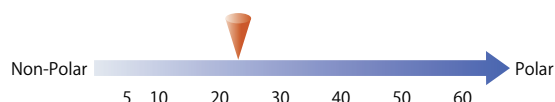
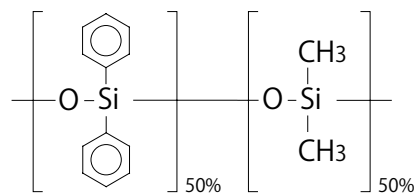
ID (mm)	Length (m)	Thickness (μm)	Max. Temperature (°C)	Cat.No.
0.25	15	0.25	iso.320-prog.340	1010-20122
	30	0.25	iso.320-prog.340	1010-20142
	60	0.25	iso.320-prog.340	1010-20162
0.32	15	0.25	iso.320-prog.340	1010-20222
	30	0.25	iso.320-prog.340	1010-20242
	60	0.25	iso.320-prog.340	1010-20262

# InertCap™ 17

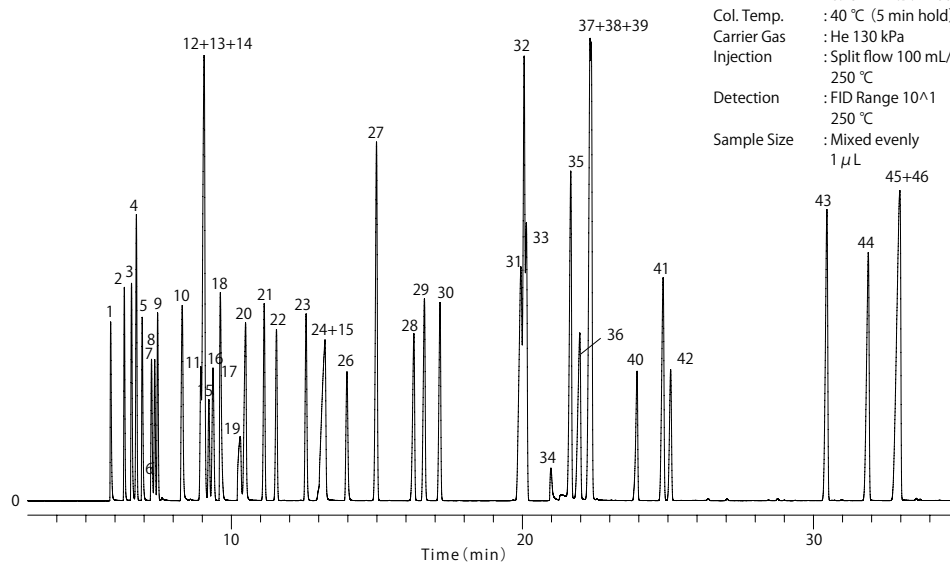
- 50 % Phenyl - 50 % Methylpolysiloxane
- USP Phase G3
- Medium Polar
- Cross-Linked
- Equivalent : DB-17, HP-50, Rtx-50, CP-Sil 24CB, SPB-50

InertCap 17 is a medium polar column incorporating 50 % phenyl and 50 % methylpolysiloxane. With stronger polarity than InertCap 35, InertCap 17 is optimal for general and pesticides analyses.

## Structure



## Organic solvents



System : GC/FID  
 Column : InertCap 17  
 0.25 mm I.D. × 60 m df = 0.25 μm  
 Col. Temp. : 40 °C (5 min hold) - 4 °C/min - 230 °C (5 min hold)  
 Carrier Gas : He 130 kPa  
 Injection : Split flow 100 mL/min  
 250 °C  
 Detection : FID Range 10<sup>1</sup>  
 250 °C  
 Sample Size : Mixed evenly  
 1 μL

1. Methanol	11. <i>cis</i> -1,2-Dichloroethylene	21. 1,2-Dichloroethane	31. <i>p</i> -Xylene	41. Cyclohexanone
2. Ethyl ether	12. Methyl ethyl ketone	22. Trichloroethylene	32. <i>m</i> -Xylene	42. 1,1,2,2-Tetrachloroethane
3. <i>i</i> -Propanol	13. <i>i</i> -Butanol	23. <i>n</i> -Propyl acetate	33. Chlorobenzene	43. <i>o</i> -Dichlorobenzene
4. <i>n</i> -Hexane	14. Ethyl acetate	24. <i>i</i> -Amyl alcohol	34. <i>N,N</i> -Dimethyl formamide	44. <i>o</i> -Cresol
5. Acetone	15. Chloroform	25. Ethyl cellosolve	35. <i>o</i> -Xylene	45. <i>p</i> -Cresol
6. Carbon disulfide	16. 1,1,1-Trichloroethane	26. 1,4-Dioxane	36. 1-Methylcyclohexanol	46. <i>m</i> -Cresol
7. Methyl acetate	17. Carbon tetrachloride	27. Toluene	37. Cyclohexanol	
8. Dichloromethane	18. Tetrahydrofuran	28. Tetrachloroethylene	38. Butyl cellosolve	
9. <i>trans</i> -1,2-Dichloroethylene	19. Methylcellosolve	29. Methyl- <i>n</i> -butyl ketone	39. Styrene	
10. 2-Butanol	20. <i>n</i> -Butanol	30. <i>n</i> -Butyl acetate	40. Cellosolve acetate	

## 【 InertCap™ 17 】

ID (mm)	Length (m)	Thickness (μm)	Max. Temperature (°C)	Cat.No.
0.25	15	0.25	iso.320-prog.340	1010-65122
		0.15		1010-65141
	30	0.25	iso.320-prog.340	1010-65142
		0.25	iso.320-prog.340	1010-65162
0.32	30	0.15	iso.320-prog.340	1010-65241
		0.25	iso.320-prog.340	1010-65242
	60	0.25	iso.320-prog.340	1010-65262
		0.25	iso.320-prog.340	1010-65425
0.53	15	1.00	iso.300-prog.320	1010-65425
	30	1.00	iso.300-prog.320	1010-65445