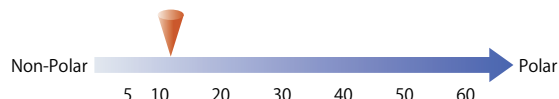
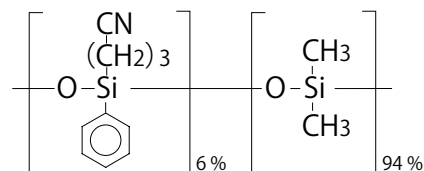


InertCap™ 1301

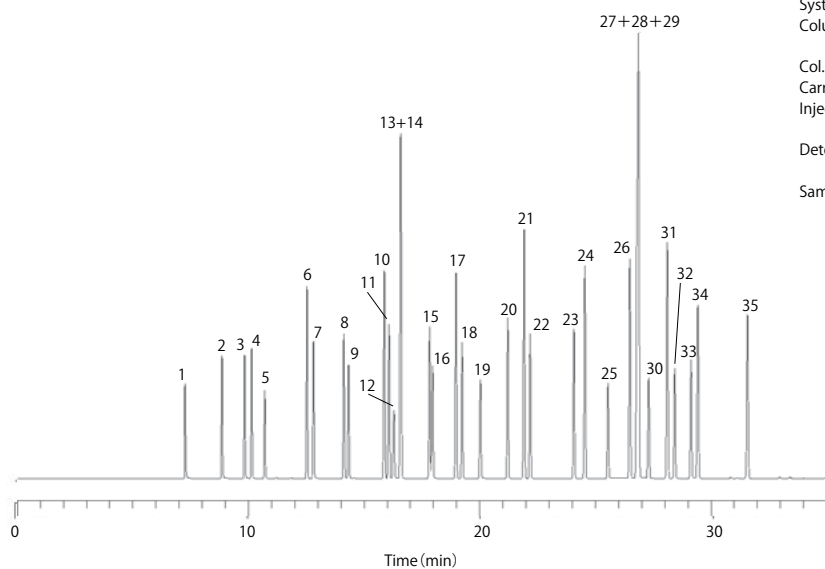
- 6 % Cyanopropylphenyl - 94 % Methylpolysiloxane
- USP Phase G43
- Medium Polar
- Cross-Linked
- Equivalent : DB-1301, HP-1301, Rtx-1301, VF-1301ms

InertCap 1301 is a medium polar column incorporating 6 % cyanopropylphenyl and 94 % methylpolysiloxane. Compared to InertCap 25, polarity of InertCap 1301 is slightly lower. Cyano group contained in the liquid phase offers unique selectivities.

Structure



Solvents



System : GC/FID
 Column : InertCap 1301
 0.25 mm I.D. × 60 m df = 1.00 μm
 Col. Temp. : 40 °C (5 min hold) - 5 °C/min - 200 °C
 Carrier Gas : He 160 kPa
 Injection : Split flow 100 mL/min
 200 °C
 Detection : FID Range 10¹
 200 °C
 Sample Size : Mixed evenly
 0.2 μL

- | | | | |
|----------------------------------|---|---|---|
| 1. Methanol | 11. 2-Methyl-1-propanol(Isobutyl alcohol) | 20. 4-Methyl-2-pentanone(MIBK) | 28. <i>m</i> -Xylene |
| 2. Ethanol | 12. 2-Methoxyethanol(Methyl cellosolve) | 21. Toluene | 29. <i>p</i> -Xylene |
| 3. Acetone | 13. Benzene | 22. Isobutyl acetate | 30. Diacetone alcohol |
| 4. 2-Propanol(Isopropyl alcohol) | 14. Isopropyl acetate | 23. <i>n</i> -Butyl acetate | 31. <i>o</i> -Xylene |
| 5. Methyl acetate | 15. 1-Butanol | 24. Ethylcyclohexane | 32. 2-Ethoxyethyl acetate(Cellosolve acetate) |
| 6. <i>n</i> -Hexane | 16. 1-Methoxy-2-propanol
(Propylene glycol monomethyl ether) | 25. 2-Methoxyethyl acetate
(Methyl cellosolve acetate) | 33. 2-Butoxyethanol(Butyl cellosolve) |
| 7. 1-Propanol | 17. Methylcyclohexane | 26. Ethylbenzene | 34. Cyclohexanone |
| 8. 2-Butanone(MEK) | 18. <i>n</i> -Propyl acetate | 27. 1-Methoxy-2-propyl acetate
(Propylene glycol monomethyl ether acetate) | 35. 2-Methylcyclohexanone |
| 9. Ethyl acetate | 19. 2-Ethoxyethanol(Cellosolve) | | |
| 10. Cyclohexane | | | |

[InertCap™ 1301]

ID (mm)	Length (m)	Thickness (μm)	Max. Temperature (°C)	Cat.No.
0.25	15	0.25	iso.280-prog.300	1010-60122
		0.50		1010-60124
		1.00		1010-60125
	30	0.25	iso.280-prog.300	1010-60142
		0.50		1010-60144
		1.00		1010-60145
	60	0.25	iso.280-prog.300	1010-60162
		0.50		1010-60164
		1.00		1010-60165

ID (mm)	Length (m)	Thickness (μm)	Max. Temperature (°C)	Cat.No.
0.32	15	0.25	iso.280-prog.300	1010-60222
		0.50		1010-60224
		1.00		1010-60225
	30	0.25	iso.280-prog.300	1010-60242
		0.50		1010-60244
		1.00		1010-60245
	60	0.25	iso.280-prog.300	1010-60262
		0.50		1010-60264
		1.00		1010-60265
0.53	15	1.00	iso.260-prog.280	1010-60425
	30	1.00	iso.260-prog.280	1010-60445