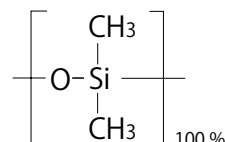


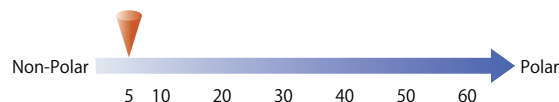
InertCap™ 1MS

- 100 % Methylpolysiloxane
- USP Phase G2
- Non-Polar
- Cross-Linked
- Ultra Low Bleed
- Equivalent : DB-1ms, HP-1ms, Rxi-1ms, VF-1ms, Equity-1

Structure



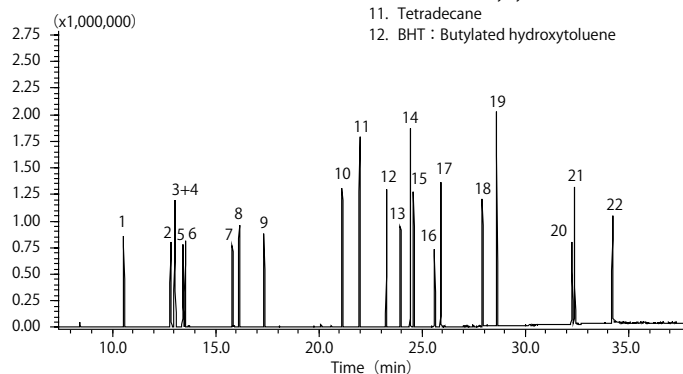
InertCap 1MS is a non-polar column incorporating 100 % methylpolysiloxane. Samples elute in order of low boiling points. Designed for GC/MS, InertCap 1MS realizes the world highest inertness and lowest bleeding.



Automobile Interior Material Analysis

System : GC/MS Thermal Desorption (T-Dex II)
 Column : InertCap 1MS
 0.25 mm I.D. × 60 m df = 0.25 μm
 Col. Temp. : 40 °C (5 min hold) – 10 °C/min – 280 °C (21 min hold)
 Carrier Gas : He 1 mL/min (constant flow)
 Injection : Thermal Desorption 270 °C
 Split 1 : 5
 Detection : MS Scan
 Sample Size : 100 μg/mL in Ethanol
 1 μL

1. Toluene
2. Ethylbenzene
3. *m*-Xylene
4. *p*-Xylene
5. Styrene
6. *o*-Xylene
7. *p*-Dichlorobenzene
8. 2-Ethyl-1-hexanol
9. Nonanal
10. D6 : Hexamethylcyclotrisiloxane
11. Tetradecane
12. BHT : Butylated hydroxytoluene
13. DEP : Diethyl phthalate
14. C16 : *n*-Hexadecane
15. TBP : Tributyl phosphate
16. TCEP : Tris (2-chloroethyl) phosphate
17. DBA : Di-*n*-butyl adipate
18. DBP : Di-*n*-butyl phthalate
19. C20 : *n*-Eicosane
20. TPP : Triphenyl phosphate
21. DOA : Di (2-ethylhexyl) adipate
22. DOP : Di (2-ethylhexyl) phthalate



【 InertCap™ 1MS 】

ID (mm)	Length (m)	Thickness (μm)	Max. Temperature (°C)	Cat.No.
0.25	15	0.25	iso.325-prog.350	1010-12122
	30	0.25	iso.325-prog.350	1010-12142
		1.00	iso.300-prog.320	1010-12145
	60	0.25	iso.325-prog.350	1010-12162
1.00		iso.300-prog.320	1010-12165	
0.32	15	0.25	iso.325-prog.350	1010-12222
	30	0.25	iso.325-prog.350	1010-12242
	60	0.25	iso.325-prog.350	1010-12262

【 InertCap™ 1MS ProGuard (Built-in Guard Column) 】

ID (mm)	Length (m)	Thickness (μm)	Guard Column (m)	Max. Temperature (°C)	Cat.No.
0.25	30	0.25	2	iso.325-prog.350	1010-12172
			5		1010-12173
			10		1010-12174

【 InertCap™ 1MS T.L. (Built-in Transfer Line) 】

ID (mm)	Length (m)	Thickness (μm)	Transferline (m)	Max. Temperature (°C)	Cat.No.
0.25	30	0.25	2	iso.325-prog.350	1010-12192

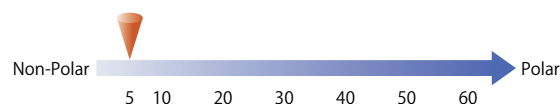
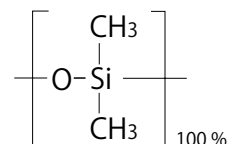
※ See page 32 for more information about ProGuard and T.L.

InertCap™ 1

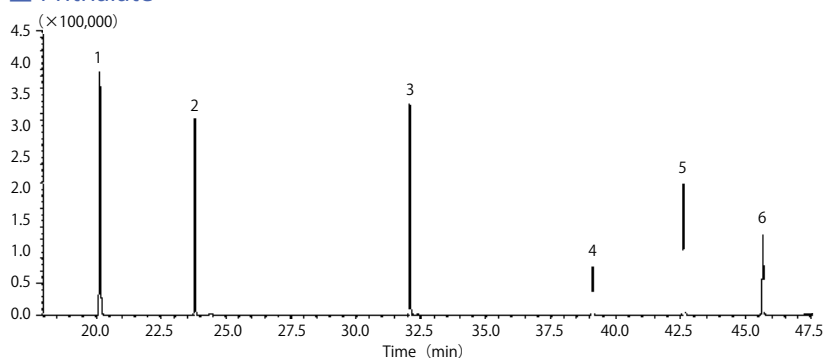
- 100 % Methylpolysiloxane
- USP Phase G2
- Non-Polar
- Cross-Linked
- Equivalent : DB-1, HP-1, Rtx-1, CP-Sil 5CB, SPB-1, BP-1

InertCap 1 is a non-polar column incorporating 100 % methylpolysiloxane. Samples elute in order of low boiling points. InertCap 1 has broad utility and can be used for a variety of general analyses.

Structure



Phthalate



System : GC/MS
 Column : InertCap 1
 0.25 mm I.D. × 30 m df = 0.25 μm
 Col. Temp. : 60 °C (3 min hold) - 5 °C/min - 280 °C (3 min hold)
 Injection : Splitless
 280 °C
 Detection : MS SIM
 Sample Size : 1 μL

1. Dimethylphthalate
2. Diethylphthalate
3. Di-*n*-butylphthalate
4. Butylbenzylphthalate
5. Di (2-ethylhexyl) phthalate
6. Dioctylphthalate

【InertCap™ 1】

ID (mm)	Length (m)	Thickness (μm)	Max. Temperature (°C)	Cat.No.	
0.18	15	0.18	iso.325-prog.350	1010-11021	
		0.28		1010-11022	
	20	0.18	iso.325-prog.350	1010-11031	
		0.28		1010-11032	
0.25	15	0.25	iso.325-prog.350	1010-11122	
		0.40		1010-11123	
		0.50		1010-11124	
		5.00		iso.260-prog.300	1010-11129
	30	0.10	iso.325-prog.350	1010-11140	
		0.25		1010-11142	
		0.40		1010-11143	
		0.50		1010-11144	
		1.00		iso.300-prog.320	1010-11145
		1.50		1010-11146	
		5.00		iso.260-prog.300	1010-11149
		5.00		1010-11149	
60	0.25	iso.325-prog.350	1010-11162		
	0.40		1010-11163		
	0.50		1010-11164		
	1.00		iso.300-prog.320	1010-11165	
	1.50		1010-11166		
	1.50		1010-11166		
0.32	15	0.25	iso.325-prog.350	1010-11222	
		0.40	1010-11223		
		5.00	iso.260-prog.300	1010-11229	

ID (mm)	Length (m)	Thickness (μm)	Max. Temperature (°C)	Cat.No.	
0.32	30	0.25	iso.325-prog.350	1010-11242	
		0.40		1010-11243	
		0.50		1010-11244	
		1.00		iso.300-prog.320	1010-11245
		5.00		iso.260-prog.300	1010-11249
	60	0.25	iso.325-prog.350	1010-11262	
		0.40		1010-11263	
		0.50		1010-11264	
		1.00		iso.300-prog.320	1010-11265
		5.00		iso.260-prog.300	1010-11269
0.53	15	1.00	iso.300-prog.320	1010-11425	
		1.50		1010-11426	
		2.00		1010-11427	
		3.00		1010-11428	
		5.00		iso.260-prog.280	1010-11429
	30	1.00	iso.300-prog.320	1010-11445	
		1.50		1010-11446	
		2.00		1010-11447	
		3.00		1010-11448	
		5.00		iso.260-prog.280	1010-11449
		2.00		iso.300-prog.320	1010-11467
		5.00		iso.260-prog.280	1010-11469
		5.00		1010-11469	

【InertCap™ 1 ProGuard (Built-in Guard Column)】

ID (mm)	Length (m)	Thickness (μm)	Guard Column (m)	Max. Temperature (°C)	Cat.No.
0.25	30	0.25	2	iso.325-prog.350	1010-11172
			5		1010-11173
			10		1010-11174

※ See page 32 for more information about ProGuard and T.L.