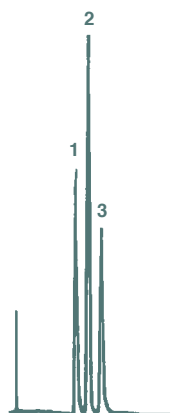


All dimensions and lengths available for micro bore 1.0 mm, semi-preparative, preparative, specialty sizes, and threaded modular column, please refer to page 5.

# Ion Exchange Phases

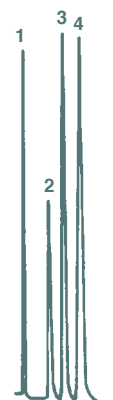
- Ideal for difficult to separate ionic compounds
- Useful for water soluble compounds
- Available in weak anion, strong anion, strong cation, and weak cation phases

Ion Exchange HPLC provides the method of choice for ionic compounds that fail to separate on reverse phase columns by ion suppression or paired ion methodologies. Ion Exchange HPLC Columns can provide interesting selectivities for aromatic compounds and nucleotides and are ideal for aqueous soluble compounds.



### Phenylenediamine Isomers

Column: 15 cm x 4.6 mm  
 Packing: Chromegabond RP-SCX  
 Mobile phase: 90/10 A/B A-1M H<sub>3</sub>PO<sub>4</sub> adjusted to pH 3.2 with NH<sub>4</sub>OH B-CH<sub>3</sub>OH  
 Flow rate: 1 mL/min.  
 Detection: 254 nm  
 1. p-Phenylenediamine  
 2. m-Phenylenediamine  
 3. o-Phenylenediamine



### Aromatic Carboxylic Acids

Column: 25 cm x 4.6 mm  
 Packing: Chromegabond RP-SAX 5 μ 60 A  
 Mobile phase: 90% Water (pH 2.6), 10% Methanol  
 Flow rate: 1.5 mL/min.  
 1. Nicotinic Acid  
 2. Benzoic Acid  
 3. o-Toluic Acid  
 4. m-Toluic Acid

Description	Particle Size (μ)	Length (mm)	Standard-bore P/N (4.6 mm)	Standard-bore P/N (4.0 mm)	Small-bore P/N (3.2 mm)	Small-bore P/N (2.0 mm)
SCX	5	50	115211-SCX	114211-SCX	11d211-SCX	112211-SCX
SCX	5	100	125211-SCX	124211-SCX	12d211-SCX	122211-SCX
SCX	5	150	135211-SCX	134211-SCX	13d211-SCX	132211-SCX
SCX	5	250	155211-SCX	154211-SCX	15d211-SCX	152211-SCX
RP-SCX	5	50	115211-RP-SCX	114211-RP-SCX	11d211-RP-SCX	112211-RP-SCX
RP-SCX	5	100	125211-RP-SCX	124211-RP-SCX	12d211-RP-SCX	122211-RP-SCX
RP-SCX	5	150	135211-RP-SCX	134211-RP-SCX	13d211-RP-SCX	132211-RP-SCX
RP-SCX	5	250	155211-RP-SCX	154211-RP-SCX	15d211-RP-SCX	152211-RP-SCX
SAX	5	50	115211-SAX	114211-SAX	11d211-SAX	112211-SAX
SAX	5	100	125211-SAX	124211-SAX	12d211-SAX	122211-SAX
SAX	5	150	135211-SAX	134211-SAX	13d211-SAX	132211-SAX
SAX	5	250	155211-SAX	154211-SAX	15d211-SAX	152211-SAX
RP-SAX	5	50	115211-RP-SAX	114211-RP-SAX	11d211-RP-SAX	112211-RP-SAX
RP-SAX	5	100	125211-RP-SAX	124211-RP-SAX	12d211-RP-SAX	122211-RP-SAX
RP-SAX	5	150	135211-RP-SAX	134211-RP-SAX	13d211-RP-SAX	132211-RP-SAX
RP-SAX	5	250	155211-RP-SAX	154211-RP-SAX	15d211-RP-SAX	152211-RP-SAX
M-WAX	5	50	115211-M-WAX	114211-M-WAX	11d211-M-WAX	112211-M-WAX
M-WAX	5	100	125211-M-WAX	124211-M-WAX	12d211-M-WAX	122211-M-WAX
M-WAX	5	150	135211-M-WAX	134211-M-WAX	13d211-M-WAX	132211-M-WAX
M-WAX	5	250	155211-M-WAX	154211-M-WAX	15d211-M-WAX	152211-M-WAX
D-WAX	5	50	115211-D-WAX	114211-D-WAX	11d211-D-WAX	112211-D-WAX
D-WAX	5	100	125211-D-WAX	124211-D-WAX	12d211-D-WAX	122211-D-WAX
D-WAX	5	150	135211-D-WAX	134211-D-WAX	13d211-D-WAX	132211-D-WAX
D-WAX	5	250	155211-D-WAX	154211-D-WAX	15d211-D-WAX	152211-D-WAX
T-WAX	5	50	115211-T-WAX	114211-T-WAX	11d211-T-WAX	112211-T-WAX
T-WAX	5	100	125211-T-WAX	124211-T-WAX	12d211-T-WAX	122211-T-WAX
T-WAX	5	150	135211-T-WAX	134211-T-WAX	13d211-T-WAX	132211-T-WAX
T-WAX	5	250	155211-T-WAX	154211-T-WAX	15d211-T-WAX	152211-T-WAX