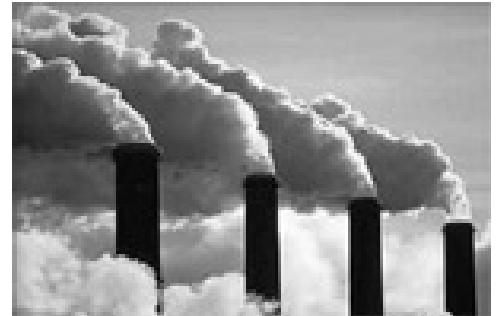


Filtration and microfiltration products for applications in environmental analysis

CHMLAB filter papers are used widely
in the environmental analysis to monitor
air, water and emissions



| PROCESS | TECHNIQUE | FILTER TYPE | REF. CHM | REF. CHM |
|---|-----------------------|----------------------------|--------------------------|------------|
| Sampling of the suspended particles PST (<30um) | High Volume receivers | Weight difference | Glass Microfiber Filter | GF1-150 |
| | Low Volume receivers | | | GF1-203254 |
| | Shocking cascade | | | GF1-047 |
| PM10 Sampling and Analysis (or aerodynamic =10um) | High Volume receivers | | Quartz Microfiber Filter | QF1-150 |
| | Low Volume receivers | | | QF1-203254 |
| | Shocking cascade | | | QF1-047 |
| PM2,5 Sampling and analysis (or aerodynamic =2,5um) | High Volume receivers | Quartz Microfiber Filter | QF1-150 | |
| | Low Volume receivers | | QF1-203254 | |
| | Shocking cascade | | QF1-047 | |
| Pb Sampling and Analysis | High Volume receivers | Absorption atomic spectrum | Quartz Microfiber Filter | QF1-150 |
| | Low Volume receivers | | | QF1-203254 |
| | Shocking cascade | | | QF1-047 |
| | | | | QF1-203254 |

Filtration and
microfiltration
products
for applications
in environmental
analysis