

bioproduction | 10-95

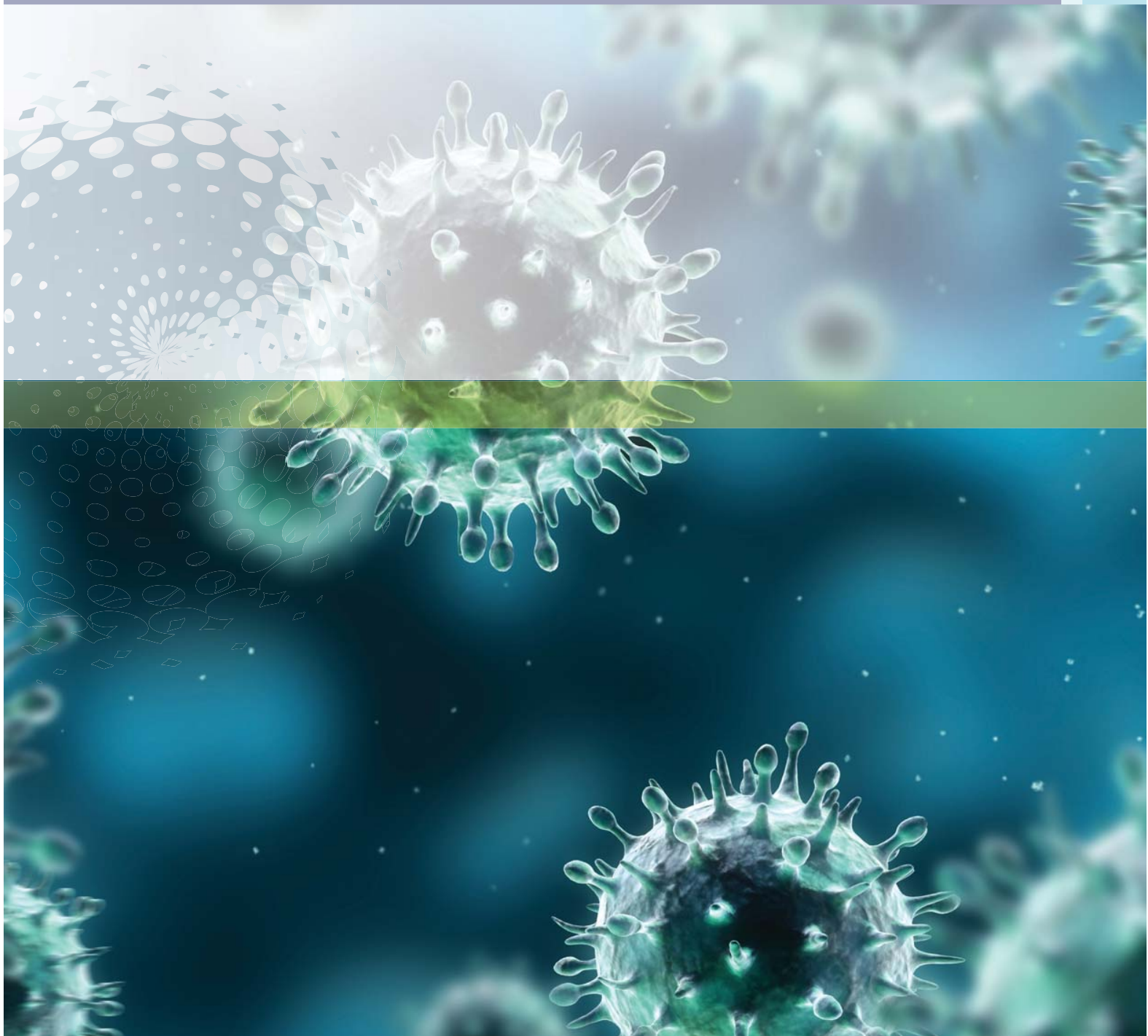
Process solutions at every scale.

Biopharmaceutical companies worldwide face enormous regulatory pressures throughout their production workflow. And as new drugs, vaccines and other biologicals are approved, the need becomes critical to standardize on consumables that offer uncompromised integrity.

That's where we come in. From upstream cell culture production and harvest through the storage of high-value bulk intermediates and active pharmaceutical ingredients—Thermo Scientific bioprocessing products deliver proven solutions at every scale. With a wealth of experience and knowledge behind every product, you are ensured that your bioproduction process performs at its best.

Thermo Scientific Nunc and Nalgene products are specifically designed to deliver proven performance with innovative, efficient and highly-effective upstream or downstream applications. From a single source, you can optimize production, improve process efficiency, increase flexibility and fast-track product development and market introduction.

- For more information about Thermo Scientific bioproduction solutions visit:
www.thermoscientific.com/bioproduction



optimize production

► Bioproduction Table of Contents

Thermo Scientific Products	Page
Nalgene Sterile Square Storage Bottles with Closures	13
Nalgene Certified Clean Containers	14
Heat-Shrink Bands for Thermo Scientific Nalgene Square PETG Storage Bottles	15
Nalgene InVitro Biotainer Bottles	16
Nalgene Biotainer Replacement Closures	17
Nalgene InVitro Biotainer Bottles	18
Nalgene Autoclavable Carboys with Handles	19
Nalgene Heavy Duty Vacuum Carboys	20
Nalgene Round Clearboys	21
Nalgene Validation Bottles	22
Nalgene Round Carboys	23
Nalgene Fluorinated Carboys	23
Nalgene Amber Carboy	24
Nalgene InVitro Biotainer Carboys	25
Nalgene Single-Use Carboy	26
Nalgene Handle for Single-Use Carboy	26
Nalgene Autoclavable Wide-Mouth Carboys with Handles	27
Nalgene Wide-Mouth Carboys with Handles	28
Nalgene Sanitary Carboys	29
Nalgene Autoclavable Carboys with Sanitary Flange	30
Nalgene End Caps	31
Nalgene Sanitary Gaskets for Thermo Scientific Nalgene Carboys	32
Nalgene True Union Clamps	33
Nalgene Heavy Duty Clamps	33
Nalgene Autoclavable Rectangular Carboys	34
Nalgene Rectangular Clearboys	34
Nalgene Rectangular Carboys	35
Nalgene Heavy-Duty Rectangular Carboy	35
Nalgene Heavy-Duty Wide Mouth Jug	36
Nalgene Jerricans	36
Nalgene 13 L Jerrican	37
Nalgene Fluorinated Jerricans	38
Nalgene Replacement Closures for Large Carboys and Bottles	39
Nalgene Bioprocess Bag Management System and Accessories	40
Nunc EasyFill Cell Factory Systems	41
Nunc EasyFill Cell Factory Accessories	42
Nunc Cell Factory Systems	43
Nunc Cell Factory System with Active Gassing	44
Nunc Cell Factory Accessories	45
Nunc Cell Factory Start-Up Kit	46
Nunc Cell Factory Hand Manipulator	46
Nunc Automatic Cell Factory Manipulator (ACFM)	47
Nunc Cell Factory Shaker System	48
Nunc Cell Factory Incubators	49
Nunc Cell Factory Racks and Carts	49
Nunc TufRol Roller Bottles	50
Nunc InVitro Roller Bottles	51
Nalgene Sterile Single Use Erlenmeyer Flasks	53
Nalgene Vented Closures for Sterile Single Use Erlenmeyer Flasks	54
Nalgene Fernbach Culture Flask	54
Nalgene Magnetic Culture Vessel	55

Thermo Scientific Products	Page
Nalgene Culture Vessel with Ports	55
Nalgene Probe Adapter Closure	56
Nalgene Closures with Barbed Bulkhead Fittings	56
Nalgene Autoclavable Septum Closures	57
Nunc 2D MicroHex Microcarriers	57
Nunc Skin Graft Cell Culture Dish	59
Nalgene Top Works Fluid Transfer Systems	60
Nalgene Platinum-Cured Silicone Tubing	61
Nalgene Platinum-Cured Silicone Tubing for Peristaltic Pumps	62
Nalgene Braided Platinum-Cured Silicone Tubing	63
Nalgene Quick-Filling/Venting Closures	65
Nalgene Replacement Coupling Inserts for Quick Filling Venting Closure	66
Nalgene Filling/Venting Closures	67
Nalgene Barbed Bulkhead Fittings	67
Nalgene Closures for InVitro Biotainer Bottles	68
Nalgene Vacuum Check Valve and Positive Connector	68
Nalgene T-Type Tubing Connectors	69
Nalgene Y-Type Tubing Connectors	69
Nalgene Pinch Clamp	70
Nalgene One-Way Stopcocks	71
Nalgene Three-Way Stopcocks	71
Nalgene Quick Disconnects	72
Nalgene Valved Quick Disconnects	72
Nalgene 3/4 in. Mini Hose Barb Connectors	73
Nalgene 1 in. Sanitary Hose Barb Connector	73
Nalgene Cylindrical Tank with Cover	74
Nalgene Lightweight Graduated Cylindrical Tank with Cover	75
Nalgene Lightweight Cylindrical Tank with Cover and Spigot	76
Nalgene Heavy Duty Cylindrical Tanks with Cover	77
Nalgene Heavy Duty Cylindrical Tanks with Spigot	78
Nalgene Tank Liners	79
Nalgene Rectangular Tank with Cover	80
Nalgene Heavy Duty Rectangular Tank with Cover	80
Nalgene Closed-Dome Tanks	81
Nalgene Closed-Dome Tank Closure with Mixer Support Assembly	81
Nalgene Spigots for Storage Tanks	82
Nalgene Centrifuge Bottles	83
Nalgene Centrifuge Bottles with Sealing Closure	84
Nalgene Centrifuge Bottles	85
Nalgene Centrifuge Bottles with Sealing Closure	86
Nalgene Teflon® FEP Centrifuge Bottle	87
Nalgene Centrifuge Bottles	87
Nalgene Centrifuge Bottle Adapter	88
Nalgene Sealing Cap Assembly	88
Nalgene Spherical-Bottom Centrifuge Bottle	89
Nalgene Spherical-Bottom Centrifuge Bottle Adapter	89
Nalgene Conical-Bottom Centrifuge Bottle	90
Nalgene Conical-Bottom Centrifuge Bottle Adapter	91
Nalgene 1 L Super Speed Centrifuge Bottles with Sealing Closure	93
Nalgene 2 L Bio Bottle with Sealing Closure	94
Nalgene Bottle Low & High Speed Selector Guide	95

► **Thermo Scientific Nalgene Sterile Square Storage Bottles with Closures**
polyethylene terephthalate copolyester, white high-density polyethylene closures



Nalgene™ PETG Square Storage Bottles are heavy-walled and durable, ideal for storage and sampling of active pharmaceutical ingredients and bulk intermediates.

Well suited for the preparation and containment of buffers, culture media and general laboratory solutions.

PETG's enhanced material properties feature low permeability to CO₂/O₂ and provide longer-term storage of pH-sensitive contents.

details

- Made from durable, break-resistant PETG
- Suitable for frozen storage down to -40°C
- Leakproof† bottles and closures are provided sterile and non-pyrogenic
- Eliminates costly washing, depyrogenation and autoclaving steps
- Available in low particulate format
- Supported by extensive validation documentation

Ordering Information: Packed in shrink-wrapped trays.

Compliance: USP Class VI, non-cytotoxic, USP <661>, non-pyrogenic, FDA 21CFR 177.1315.

† The term "leakproof" applies to Thermo Scientific Nalgene products that meet the following criteria: a) Bottle/flask/funnel closure systems with closures smaller than 100 mm, after they are filled with water, inverted, withstand air pressure of 2 psig for 2 minutes, and no water escapes; b) Bottle/funnel/flask closure systems of larger than 100 mm after they are filled with water, inverted for 15 minutes, and no water escapes. Note: these tests, using other liquids, may not yield the same results. To ensure safe usage, customers are advised to test Thermo Scientific Nalgene bottles and closures under conditions of their planned applications. Thermo Scientific Nalgene products are leakproof at ambient temperature and pressure when used with their Nalgene closures.

Nalgene Square Storage Bottles with Closures

Cat. No.	Nominal Capacity, mL (oz.)	Closure Size, mm	O.D., mm	Height with Closure, mm	No. per Pack	No. per Case
2019-0030	30 (1)	20	38 Square	64	24	96
2019-0060	60 (2)	24	41 Square	82	24	96
2019-0125	125 (4)	38-430	52 Square	108	24	48
2019-0250	250 (8)	38-430	59 Square	144	24	48
2019-0500	500 (16)	38-430	73 Square	178	12	24
2019-1000	1000 (32)	38-430	92 Square	219	12	24
2019-2000	2000 (64)	53B	116 Square	271	6	12

► **Take the guess work out of designing customized fluid transfer systems: visit www.thermoscientific.com/tubingconfigurator**

► Thermo Scientific Nalgene Certified Clean Containers

polyethylene terephthalate copolyester, high-density polyethylene closures



Nalgene™ PETG Certified Clean Containers are specifically designed for cleanroom applications.

Ideal for processing and storing critical reagents and bulk intermediates such as vaccines and protein therapeutics. The bottles are lot to lot tested and certified using liquid particulate count analysis for particulate control as specified in the following international compendia: USP <788>, EP 2.9.19 and JP 14th edition Part 1, Section 24.

details

- Manufactured in a ISO 14644-1 Class 7 certified clean room
- Comprised of resins that are free of animal derived components
- Sterile, tamper-resistant seal ensures product integrity prior to use
- Supported by extensive validation documentation
- Certified sterile and non-pyrogenic, eliminating costly cleaning and associated validations

Certifications: USP <788>, EP 2.9.19 and JP 14th edition Part 1, Section 24.

Compliance: USP Class VI, non-cytotoxic, USP <661>, non-pyrogenic, FDA 21CFR 177.1315.

Nalgene Certified Clean Containers

Cat. No.	Nominal Capacity, mL (oz.)	Closure Size, mm	O.D., mm	Height with Closure, mm	No. per Pack	No. per Case
382019-0030	30 (1)	20	38 Square	64	6	72
382019-0060	60 (2)	24	41 Square	82	6	72
382019-0125	125 (4)	38-430	52 Square	108	6	48
382019-0250	250 (8)	38-430	59 Square	144	6	48
382019-0500	500 (16)	38-430	73 Square	178	4	24
382019-1000	1000 (32)	38-430	92 Square	219	4	24
382019-2000	2000 (64)	53B	116 Square	271	1	12



► **Heat-Shrink Bands for Thermo Scientific Nalgene Square PETG Storage Bottles**
polyvinyl chloride



The heat-shrink bands found on Nalgene™ Sterile Square PETG Storage Bottles provide a tamper-resistant seal to ensure the integrity of the bottle contents.

Simply apply the recommended application torque for Nalgene closures, and slide the heat-shrink band over the closure and bottle neck; heat the band to shrink and secure contents.

details

- Gamma stable and include a perforated “tear strip” feature for easy removal
- Available in 4 sizes to mate with Nalgene PETG Square Storage Bottles
- Packed 1,000 per case (two zipper bags of 500 each)

Heat-Shrink Bands for Nalgene Square PETG Storage Bottles

Cat. No.	Description	Closure Size, mm	No. per Pack	No. per Case
312160-0200	Fits 30 mL Square PETG Storage Bottle	20-415	500	1000
312160-0240	Fits 60 mL Square PETG Storage Bottle	24-415	500	1000
312160-0384	Fits 125 - 1000 mL Square PETG Storage Bottles	38-430	500	1000
312160-0530	Fits 2000 mL Square PETG Storage Bottle	53B	500	1000

► Thermo Scientific Nalgene InVitro Biotainer Bottles

polyethylene terephthalate copolyester, polyethylene foam lined polypropylene closures



Nalgene™ InVitro™ Biotainer™ Bottles are molded of crystal clear PETG.

Ideal for prolonged storage of pH sensitive materials such as culture media. InVitro Biotainer Bottles are certified sterile and ready to use. They eliminate the cost of cleaning, sterilizing and its associated validations, compared to bottles designed for re-use.

details

- Constructed of durable, crystal clear PETG – ensuring sample integrity
- Closures feature a PE foam core liner for leakproof assurance
- Customization options available for fluid transfer applications
- Supported by extensive validation documentation
- PETG Biotainers are suitable for storage in conditions from -40°C to +70°C

Compliance: USP Class VI, non-cytotoxic, USP <661>, non-pyrogenic, FDA 21CFR 177.1315.

Nalgene InVitro Biotainer Bottles

Cat. No.	Nominal Capacity, mL	Closure Size, mm	O.D., mm	Height with Closure, mm	No. per Pack	No. per Case
3025-42	125	38	52 Square	105	5	100
3005-42	500	38	77 Square	176	5	70
3005-70	500	38	77 Square	176	35	70
3110-35	1000	48	98 Square	201	35	35
3110-42	1000	48	98 Square	201	5	35
3230-20	2000	48	116 Square	265	20	20
3230-42	2000	48	116 Square	265	5	20
3415-16	5 L	48	166 Square	299	1	6
3415-42	5 L	48	166 Square	299	6	6

► Take the guess work out of designing customized fluid transfer systems: visit www.thermoscientific.com/tubingconfigurator

► **Thermo Scientific Nalgene InVtiro Biotainer Bottles**
light blue polycarbonate, silicone lined polypropylene closures



Nalgene™ InVtiro™ Biotainer™ Bottles are excellent for freezing applications.

Nalgene InVtiro Biotainer Bottles are designed specifically for pharmaceutical and biological manufacturers. Supplied sterile and ready to use, they reduce the risk of carry-over contamination and eliminate the cost of cleaning, sterilization, and associated validations.

details

- Constructed of durable, translucent PC – ensuring the integrity of your sample
- Closures feature a silicone liner for leakproof assurance
- Customization options available for fluid transfer applications
- Supported by extensive validation documentation
- Suitable for use in storage conditions of -100°C to +100°C

Compliance: USP Class VI, non-cytotoxic, USP <661>, non-pyrogenic, FDA 21CFR 177.1315.

Nalgene InVtiro Biotainer Bottles

Cat. No.	Nominal Capacity, mL	Closure Size, mm	O.D., mm	Height with Closure, mm	No. per Pack	No. per Case
3030-42	125	38	77 Square	176	5	50
3110-42	1000	48	98 Square	201	5	35
3110-35	1000	48	98 Square	201	35	35
3233-42	2000	48	116 Square	265	5	20
3405-16	5 L	48	166 Square	299	1	6
3405-42	5 L	48	166 Square	299	6	6
3500-20*	20	20	29.7 Round	68.5	500	500

* Validation vial

► **Thermo Scientific Nalgene Biotainer Replacement Closures**
polypropylene with silicone liner



Nalgene™ Biotainer Replacement Closures for 1 L, 2 L, 5 L, 10 L and 20 L PC Biotainer bottles and carboys.

details

- PP with silicone liner
- Closure size: 48 mm
- Sterile

Nalgene Biotainer Replacement Closures

Cat. No.	Description	Closure Size, mm	No. per Pack	No. per Case
362515-0480	Silicone-Lined Replacement Closures, sterile	48	1	300

► Thermo Scientific Nalgene InVitro Biotainer Bottles

high-density polyethylene, silicone lined polypropylene closures



Nalgene™ HDPE InVitro™ Biotainer™ Bottles are well suited for storage and transport of biological solutions.

HDPE Biotainer Bottles offer excellent chemical resistance, and are certified sterile and ready-to-use. They eliminate the cost of cleaning, sterilizing and its associated validations compared to bottle designed for reuse.

details

- Closures feature a silicone liner for leakproof[†] assurance
- Supported by extensive validation documentation
- Suitable for storage in conditions of -100°C to +120°C

Compliance: USP Class VI, non-cytotoxic, USP <661>, non-pyrogenic, FDA 21CFR 177.1520.

Nalgene InVitro Biotainer Bottles

Cat. No.	Nominal Capacity, L	Closure Size, mm	O.D., mm	Height with Closure, mm	No. per Pack	No. per Case
3750-24*	4	38	143 Square	299	8	24
3751-24	4	38	143 Square	299	24	24
3751-42	4	38	143 Square	299	8	24

* Shrinkband

► Take the guess work out of designing customized fluid transfer systems: visit www.thermoscientific.com/tubingconfigurator

► **Thermo Scientific Nalgene Autoclavable Carboys with Handles**

polypropylene, white polypropylene closure, thermoplastic elastomer gasket



Nalgene™ Autoclavable Carboys with Handles are ideal for the containment of media, bulk pharmaceutical ingredients and other solutions.

details

- Convenient shoulder handles allow easy carrying and pouring
- Available in 10, 20, and 50 L sizes for a variety of biopharmaceutical applications
- Graduated to contain in liters and gallons
- Autoclavable/Graduated/Leakproof†

Related Products: Additional closure options include Nalgene Quick Filling/Venting Closures (Cat. No. 2158), Nalgene Filling/Venting Closures (Cat. No. 2162), Nalgene Top Works Fluid Transfer Systems (Cat. No. 2135) and Nalgene 30 mL Validation Bottle for material compatibility studies (Cat. No. DS2126-0030).

Additional accessories include Nalgene Barbed Bulk Head Fittings (Cat. No. 6149).

Nalgene Autoclavable Carboys with Handles

Cat. No.	Capacity, L (gal.)	Nominal Brim Capacity, L (gal.)	Closure Size, mm	O.D., mm	Height with Closure, mm	No. per Pack	No. per Case
2250-0020	10 (2.5)	12 (3)	83B	250	389	1	6
2250-0050	20 (5)	22.5 (5.5)	83B	282	526	1	4
2250-0130	50 (13)	54 (14)	83B	379	678	1	1

► Thermo Scientific Nalgene Heavy Duty Vacuum Carboys

polypropylene, white polypropylene closure, thermoplastic elastomer gasket



Nalgene™ Heavy Duty Vacuum Carboys are ideal when service conditions are most extreme.

Useful as a vacuum trap; will hold a vacuum for 8 hours.

details

- Not rated for pressure use
- Customization options are available for fluid transfer applications
- Autoclavable/Leakproof†

Related Products:

Related Products: Additional closure options include Nalgene Quick Filling/Venting Closures (Cat. No. 2158), Nalgene Filling/Venting Closures (Cat. No. 2162), Nalgene Top Works Fluid Transfer Systems (Cat. No. 2135) and Nalgene 30 mL Validation Bottle for material compatibility studies (Cat. No. DS2126-0030).

Additional accessories include Nalgene Barbed Bulkhead Fittings (Cat. No. 6149).

For 1-5 L sizes, please refer to Nalgene Heavy Duty Vacuum Bottles (Cat. No. 2126).

Nalgene Heavy Duty Vacuum Carboys

Cat. No.	Nominal Capacity, L (gal.)	Nominal Brim Capacity, L (gal.)	Closure Size, mm	O.D., mm	No. per Pack	No. per Case
2226-0020	10 (2.5)	12 (3)	83B	250	1	6
2226-0050	20 (5)	22.5 (5.5)	83B	282	1	4

► Take the guess work out of designing customized fluid transfer systems: visit www.thermoscientific.com/tubingconfigurator

► **Thermo Scientific Nalgene Round Clearboys**
 polycarbonate, white polypropylene closure, thermoplastic elastomer gasket



Nalgene™ Round Transparent Clearboys™ are durable, lighter and safer than glass.

Useful for large-volume media and culture preparation, especially where visual inspection of contents for quality is important. Ideal for refrigerated or frozen storage of aqueous solutions such as sterile water, reagents and media.

details

- Available in 10 L and 20 L sizes for a variety of biopharmaceutical applications
- Graduated to contain in liters and gallons
- Molded of transparent, durable polycarbonate
- Customization options available for fluid transfer applications
- Autoclavable/Graduated/Leakproof†

Related Products: Additional closure options include Nalgene Quick Filling/Venting Closures (Cat. No. 2158), Nalgene Filling/Venting Closures (Cat. No. 2162) Nalgene Top Works™ Fluid Transfer Systems (Cat. No. 2135) and Nalgene Validation Bottles (Cat. No. DS2127).

Additional accessories include Nalgene Barbed Bulk Head Fittings (Cat. No. 6149).

Nalgene Round Transparent Clearboys

Cat. No.	Capacity, L (gal.)	Nominal Brim Capacity, L (gal.)	Closure Size, mm	O.D., mm	Height with Closure, mm	No. per Pack	No. per Case
2251-0020	10 (2.5)	12.5 (3.3)	83B	253	394	1	4
2251-0050	20 (5)	24 (6)	83B	287	536	1	4

► Thermo Scientific Nalgene Validation Bottles

transparent polycarbonate, white polypropylene closures, TPE gasket



Nalgene™ Validation Bottles are the ideal size to perform material compatibility validation studies for Nalgene PC Carboys.

details

- Molded of durable translucent polycarbonate, ensuring the integrity of your samples
- Manufactured with all the same materials and molding processes as Nalgene PC Carboys (Cat. No. 2251)
- Accommodates convenient material compatibility validation requiring less amounts of expensive reagents
- Autoclavable

Nalgene Validation Bottles

Cat. No.	Nominal Capacity, mL (oz.)	Closure Size, mm	O.D., mm	Height with Closure, mm	No. per Pack	No. per Case
DS2127-0030	30 (1)	20-415	32	75	1	30
DS2127-0250	250 (8)	53B	74	135	1	6
DS2127-2000	2000 (64)	53B	123	296	1	12



► Thermo Scientific Nalgene Round Carboys

low density polyethylene, white polypropylene closure



Nalgene™ LDPE Round Carboys are an ideal choice for storage and transport of reagents.

details

- Wide shoulder handles allow for easy pouring and carrying with gloved hands
- Graduation to contain in liters and gallons
- Accepts 13.5 rubber stopper for alternative sealing method
- Leakproof†

Related Products: Additional closure options include Nalgene Quick Filling/Venting Closures (Cat. No. 2158), Nalgene Filling/Venting Closures (Cat. No. 2162), Nalgene Top Works Fluid Transfer Systems (Cat. No. 2135) and Nalgene 30 mL Validation Bottle for material compatibility studies (Cat. No. DS2126-0030).

Nalgene Round Carboys

Cat. No.	Nominal Capacity, L (gal.)	Nominal Brim Capacity, L (gal.)	Closure Size, mm	O.D., mm	Height with Closure, mm	No. per Pack	No. per Case
2210-0020	10 (2.5)	12 (3)	83B	250	389	1	6
2210-0040	15 (3.75)	17	83B	285	429	1	4
2210-0050	20 (5)	22.5 (5.5)	83B	282	526	1	4
2210-0065	25 (6.5)	27.5	83B	287	594	1	4
2210-0130	50 (13)	54 (14)	83B	379	668	1	1

► Thermo Scientific Nalgene Fluorinated Carboys

high-density polyethylene, white polypropylene closure



Nalgene™ HDPE Fluorinated Carboys enhance long-term container performance, prevent permeation loss and yield lower extractables.

Fluorination improves barrier properties and reduces solvent absorption and penetration.

details

- Heavy-duty walls are safe, durable and resistant to splitting and punctures
- Fluorocarbon surfaces inside and out
- Graduated/Leakproof†

Nalgene Fluorinated Carboys

Cat. No.	Nominal Capacity, L (gal.)	Nominal Brim Capacity, L (gal.)	Closure Size, mm	O.D., mm	Height with Closure, mm	No. per Pack	No. per Case
2097-0020	10 (2.5)	12 (3)	83B	250	389	1	6
2097-0050	20 (5)	22.5 (5.5)	83B	282	526	1	4

► Thermo Scientific Nalgene Amber Carboy

high-density polyethylene, amber polypropylene closure



Nalgene™ Amber Carboys are an ideal choice for storing and mixing photosensitive chemicals, reagents, buffers and standards.

Meets the U.S. Pharmacopoeia Light Transmission Test (USP latest edition) requirements for storage of light-sensitive materials.

details

- Molded of opaque amber HDPE, offering excellent chemical resistance
- Convenient wide shoulder handles
- Leakproof†

Nalgene Amber Carboy

Cat. No.	Nominal Capacity, L (gal.)	Nominal Brim Capacity, L (gal.)	Closure Size, mm	O.D., mm	Height with Closure, mm	No. per Pack	No. per Case
2256-7020	10 (2.5)	12 (3)	83B	250	383	1	6

► **Thermo Scientific Nalgene InVitro Biotainer Carboys**
light blue polycarbonate; silicone lined polypropylene closure



Nalgene™ PC InVitro™ Biotainer™ Carboys are excellent for freezing applications.

Designed specifically for pharmaceutical and biological manufacturers, Nalgene InVitro Biotainer Carboys are supplied sterile and ready to use. They reduce the risk of carry-over contamination and eliminate the cost of cleaning, sterilizing and associated validations.

details

- Constructed of durable, translucent PC – ensuring the integrity of your sample
- Closure features a silicone-lined closure for leakproof assurance
- Suitable for use in storage conditions of -100°C to +100°C
- Supported by extensive validation documentation
- Customization options available for fluid transfer applications

Compliance: USP Class VI, non-cytotoxic, USP <661>, non-pyrogenic, FDA 21CFR 177.1520.

Nalgene InVitro Biotainer Carboys

Cat. No.	Nominal Capacity, L	Closure Size, mm	No. per Pack	No. per Case
3410-42	10	48	1	2
3410-08*	10	48	1	2
3423-42	20	48	1	3

** with polyethylene handle*

► **Custom Tubing Sets are available.**
Please refer to the Thermo Scientific
Online Custom Tubing Set Configurator at
www.thermoscientific.com/tubingconfigurator

► Thermo Scientific Nalgene Single-Use Carboy

high-density polyethylene, white polypropylene closure



Nalgene™ Single-Use HDPE Carboys are safer than glass and are the ideal containers to economically maintain and transfer sterile fluids and reagents.

Sterile, ready-to-use carboys for one-time use.

details

- Wide-mouth design for easy filling and dispensing of liquids
- Suitable for use in storage conditions of -100°C to +120°C
- Molded of HDPE offering excellent chemical resistance and impact resistance
- Customization options available for fluid transfer applications
- Supported by extensive validation documentation
- Leakproof†

Ordering Information: Optional stainless steel handle available (2229-0001).

Compliance: USP Class VI, non-cytotoxic.

Nalgene Single-Use Carboy

Cat. No.	Nominal Capacity, L (gal.)	Nominal Brim Capacity, L (gal.)	Closure Size, mm	O.D., mm	Height with Closure, mm	No. per Pack	No. per Case
342289-0050	20 (5)	23 (6)	83B	284	502	1	6

► Thermo Scientific Nalgene Handle for Single-Use Carboy

stainless steel



Nalgene™ Handle for Single-Use Carboy attaches for easy transport.

details

- For use with Nalgene Sterile Single Use Carboy (Cat. No. 342889-0050)

Nalgene Handle for Single-Use Carboy

Cat. No.	Description	Material	No. per Case
2229-0001	Handle for 20 L Single-Use Carboy	Stainless Steel	1

► **Thermo Scientific Nalgene Autoclavable Wide-Mouth Carboys with Handles**
polypropylene, white polypropylene closure



Nalgene™ Autoclavable Wide-Mouth Carboys with Handles have a convenient large opening for storage and transport of solids and powders.

details

- Convenient wide shoulder handles
- Allows easy carrying and pouring, even with gloved hands
- Graduated to contain liters and gallons
- Wide-mouth opening promotes ease of cleaning and dispensing
- Autoclavable/Graduated/Leakproof†

Nalgene Autoclavable Wide-Mouth Carboys with Handles

Cat. No.	Nominal Capacity, L (gal.)	Nominal Brim Capacity, L (gal.)	Closure Size, mm	O.D., mm	Height with Closure, mm	No. per Pack	No. per Case
2235-0020	10 (2.5)	3 (12)	100-415	250	343	1	6
2235-0050	20 (5)	5.5 (22.5)	100-415	282	483	1	4

► Thermo Scientific Nalgene Wide-Mouth Carboys with Handles

low density polyethylene, white polypropylene closures



Nalgene™ LDPE Wide-Mouth Carboys with Handles have a convenient large opening for storage and transport of solids and powders.

details

- Convenient wide shoulder handles allow easy carrying and pouring, even with gloved hands
- Graduated to contain in liters and gallons
- Wide-mouth opening promotes ease of cleaning and dispensing, and can accommodate overhead mixers
- Graduated/Leakproof†/ Not Autoclavable*

Ordering Information: *For Autoclavable Wide-Mouth Carboys, please refer to Cat. No. 2235.

Nalgene Wide-Mouth Carboys with Handles

Cat. No.	Nominal Capacity, L (gal.)	Nominal Brim Capacity, L (gal.)	Closure Size, mm	O.D., mm	Height with Closure, mm	No. per Pack	No. per Case
2234-0020	10 (2.5)	12 (3)	100-415	250	343	1	6
2234-0030	15 (4)	17	100-415	286	389	1	6
2234-0050	20 (5)	22.5 (5.5)	100-415	282	483	1	4

► Thermo Scientific Nalgene Sanitary Carboys polypropylene



Nalgene™ Sanitary Polypropylene Carboys with 3-inch sanitary neck have a non-threaded design.

The 3 in. flange accepts standard tri-clover style fittings. A clamping-closure system securely seals the carboy, requiring no torque while eliminating back-off issues.

details

- Sanitary design is easier to clean than threaded alternatives
- To seal closure, use a combination of gasket, end cap and sealing clamp
- Available in 10, 20 and 50 L sizes, supporting a variety of containment needs

Related products: PP End Caps (Cat. No. 2665-0300), Ported End Caps (Cat. No. 2688-2075 and 2689-2075), True Union Clamps (Cat. No. 2670-0300), Gaskets (Cat. No. 2672-0300).

Nalgene Carboys with 3 in. Sanitary Neck Design

Cat. No.	Nominal Capacity, L (gal.)	Neck Finish	O.D., mm	Height with Ferrule, mm	No. per Pack	No. per Case
2630-0010	10 (2.5)	3- in. Tri Clover	250	353	1	1
2630-0020	20 (5)	3- in. Tri Clover	282	496	1	1
2630-0050	50 (13)	3- in. Tri Clover	379	545	1	1

► Thermo Scientific Nalgene Sanitary Carboy polycarbonate



Nalgene™ Sanitary Carboy is a one-piece molded, non-threaded, design for use as receiver or dispensing vessel in biopharmaceutical applications.

The 3 in. flange accepts standard tri-clover style fittings. A clamping-closure system securely seals the carboy, requiring no torque while eliminating back-off issues.

details

- Sanitary design is easier to clean than threaded alternatives
- Molded of same PC resin as Nalgene PC Clearboys and PC Bottles, supporting a switch to Sanitary PC Carboys without material validation issues
- To seal closure, use a combination of gasket, end cap and sealing clamp
- Sanitary Carboy also available in PP (Cat. No. 2630)
- Graduated/Autoclavable

Related products: PP End Caps (Cat. No. 2665-0300), Ported End Caps (Cat. No. 2688-2075 and 2689-2075), True Union Clamps (Cat. No. 2670-0300), Heavy Duty Clamp (Cat. No. 2685-0300), Gaskets (Cat. No. 2672-0300).

Nalgene Sanitary Carboy

Cat. No.	Nominal Capacity, L (gal.)	Neck Finish	O.D., mm	Height with Ferrule, mm	No. per Pack	No. per Case
2261-0050	20 (5)	3 in. Tri Clover	287	498	1	4

► Thermo Scientific Nalgene Autoclavable Carboys with Sanitary Flange

polypropylene, white polypropylene closure, thermoplastic elastomer gasket



Nalgene™ Autoclavable Carboys feature a 1-1/2 in. secure, non-threaded sanitary dispensing port. They are ideal for use as a supply reservoir.

details

- Convenient molded-in handles for each handling
- Graduated to contain in liters and gallons
- Dispensing port used in combination with 1-1/2 in gasket and True Union Clamp
- Autoclavable/Graduated/Leakproof†

Compliance: USP Class VI, non-cytotoxic.

Related products: Gasket (Cat. No. 2672-0150), True Union Clamps (Cat. No. 2670-0150).

Nalgene Autoclavable Carboys Sanitary Flanges

Cat. No.	Nominal Capacity, L (gal.)	Approx Brim Capacity, L (gal.)	Closure Size	O.D., mm	Height with Closure, mm	No. per Pack	No. per Case
2640-0020	10 (2.5)	12 (3)	83B, 1-1/2 in. Tri Clover	250	389	1	1
2640-0050	20 (5)	22.5 (5.5)	83B, 1-1/2 in. Tri Clover	282	526	1	1
2640-0130	50 (13)	54 (14)	83B, 1-1/2 in. Tri Clover	379	678	1	1

► Thermo Scientific Nalgene End Caps

polypropylene



Nalgene™ Polypropylene End Caps are used to securely close off 3/4 in. mini and 3 in. sanitary ports on Nalgene Sanitary Carboys.

Groove on underside of the end cap accepts standard sanitary gasket for sealing the systems.

details

- Offers a reliable, repeatable seals when used in combination with silicone gasket (Cat. No. 2672) and True Union Clamp (Cat. No. 2670)
- Autoclavable

Compliance: USP Class VI.

Related products: PP Sanitary Carboy (Cat. No. 2630), PC Sanitary Carboy (Cat. No. 2261), Silicone Gaskets (Cat. No. 2672), True Union Clamp (Cat. No. 2670), Heavy Duty Clamp (Cat. No. 2685).

Nalgene End Caps

Cat. No.	Description	No. per Case
2665-0075	End cap for 3/4 in. Mini	1
2665-0300	End cap for 3 in. Tri Clover	1

► Thermo Scientific Nalgene End Caps

polycarbonate or polypropylene



Nalgene™ End Caps in PC or PP provide sanitary ports including 3/4 in. Mini, which offer easy filling and dispensing.

Securely mounts to 3-inch sanitary flange for applications used with Nalgene Sanitary Carboys.

details

- Available in PC and PP
- Autoclavable
- Offer a reliable, repeatable seals when used in combination with silicone gasket and True Union Clamps
- Customization options available when used with 3/4 in. Mini Hose Barb fitting

Related products: PP Sanitary Carboy (Cat. No. 2630), PC Sanitary Carboy (Cat. No. 2261), Silicone Gaskets (Cat. No. 2672), True Union Clamp (Cat. No. 2670), Heavy Duty Clamp (Cat. No. 2685), 3/4 in. Mini Hose Barb fitting (Cat. No. 7210).

Nalgene End Caps

Cat. No.	Description	Port Size, in.	No. per Pack	No. per Case
2688-2075	PC ported end cap for 3 in. Tri Clover	3/4 in. Mini x 2	1	4
2689-2075	PP ported end cap for 3 in. Tri Clover	3/4 in. Mini x 2	1	4

► Thermo Scientific Nalgene Sanitary Gaskets for Thermo Scientific Nalgene Carboys platinum cured silicone



Nalgene™ Silicone Sanitary Gaskets offers a reliable leakproof seal when used with Nalgene end caps and true-union clamps.

Constructed of Platinum Cured Silicone, the gaskets ensure the highest degree of purity for biopharmaceutical applications.

details

- For use with Nalgene Carboys (Cat. Nos. 2261, 2630, and 2640)
- Autoclavable

Related products: PP Sanitary Carboy (Cat. No. 2630), PC Sanitary Carboy (Cat. No. 2261), Silicone Gaskets (Cat. No. 2672), True Union Clamp (Cat. No. 2670), Heavy Duty Clamp (Cat. No. 2685).

Compliance: Meets USP Class VI requirements.

Nalgene Sanitary Gaskets for Nalgene Carboys

Cat. No.	Description	No. per Pack	No. per Case
2672-0075	Gasket for 3/4 in. Mini	1	6
2672-0150	Gasket for 1-1/2 in. Tri Clover	1	6
2672-0030	Gasket for 3 in. Tri Clover	1	6

► Thermo Scientific Nalgene True Union Clamps

polyvinylidene fluoride



Nalgene™ True Union Clamps offer reliable, repeatable seals when used in combination with silicone gasket and end caps.

details

- Constructed of PVDF fluoride
- Autoclavable

Related products: PP End Caps (Cat. No. 2665), Ported End Caps (Cat. Nos. 2688-2075 and 2689-2075), and Gaskets (Cat. No. 2672).

Nalgene True Union Clamps

Cat. No.	Description	No. per Case
2670-0075	True Union Clamp for 3/4 in. Mini	1
2670-0150	True Union Clamp for 1-1/2 in. Tri Clover	1
2670-0300	True Union Clamp for 3 in. Tri Clover	1

► Thermo Scientific Nalgene Heavy Duty Clamps

stainless steel



Nalgene™ Heavy Duty Stainless Steel Clamps assure leakproof fluid seals for use with Nalgene Sanitary Carboys.

details

- Strong, spring-loaded clamp
- For use with Nalgene PC Sanitary Carboy (Cat. No. 2261)
- Autoclavable

Related products: PP End Caps (Cat. No. 2665-0300), Ported End Caps (Cat. Nos. 2688-2075 and 2689-2075), Gaskets (Cat. No. 2672-0300).

Nalgene Heavy Duty Stainless Steel Clamps

Cat. No.	Description	No. per Pack	No. per Case
2685-0300	Stainless Steel Clamp for 3 in. Tri Clover	1	1

► Thermo Scientific Nalgene Autoclavable Rectangular Carboys polypropylene



Nalgene™ Rectangular Carboys are molded of tough, translucent and autoclavable polypropylene. Ideal for storing solutions and handling large volumes of powders and other solid samples.

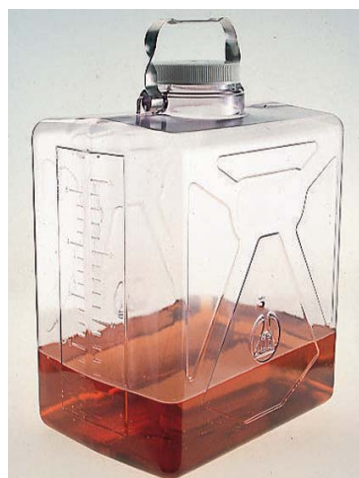
details

- Large-neck opening for easy filling and cleaning
- Includes sturdy stainless steel handle attached to molded-in shoulder loops
- Graduated in liters and gallons
- Autoclavable/Graduated/Leakproof†

Nalgene Autoclavable Rectangular Carboys

Cat. No.	Nominal Capacity, L (gal.)	Nominal Brim Capacity, L (gal.)	Closure Size, mm	L x W x H, mm (in.)	No. per Pack	No. per Case
2212-0020	9 (2)	9 (2)	100-415	220 x 153 x 360 (9 x 6 x 14)	1	6
2212-0050	20 (5)	21 (5.5)	100-415	320 x 229 x 399 (13 x 9 x 16)	1	4

► Thermo Scientific Nalgene Rectangular Clearboys polycarbonate, polypropylene closure



Nalgene™ Rectangular Clearboys™ are lightweight, space-saving and durable.

These carboys are ideal for storing solutions and handling large volumes of powders and other solid samples.

details

- Wide-mouth opening permits easy filling, transferring and cleaning
- Graduated to contain in liters and gallons
- Stainless steel handle for ease in transporting containers
- Molded of transparent PC, making this carboy ideal when visual inspection of contents is required
- Autoclavable/Graduated/Leakproof†

Nalgene Rectangular Clearboys

Cat. No.	Capacity, L (gal.)	Nominal Brim Capacity, L (gal.)	Closure Size, mm	L x W x H, mm (in.)	No. per Pack	No. per Case
DS2213-0020	9 (2)	9 (2)	100-415	220 x 153 x 360 (9 x 6 x 14)	1	1
DS2213-0050	20 (5)	21 (5.5)	100-415	320 x 229 x 399 (13 x 9 x 16)	1	1

► Thermo Scientific Nalgene Rectangular Carboys

high-density polyethylene, polypropylene closure



Nalgene™ HDPE Rectangular Carboys have a sturdy, space-saving design.

These carboys are ideal for storing solutions and handling large volumes of powders and other solid samples.

details

- Graduated to contain liters and gallons
- Wide-mouth opening permits easy filling, transferring and cleaning
- Includes sturdy stainless steel handle attached to molded-in shoulder loops
- Autoclavable/Graduated/Leakproof†

Nalgene Rectangular Carboys without Spigots

Cat. No.	Capacity, L (gal.)	Nominal Brim Capacity, L (gal.)	Closure Size, mm	L x W x H, mm (in.)	No. per Pack	No. per Case
2211-0020	9 (2)	9 (2)	100-415	220 x 153 x 360 (9 x 6 x 14)	1	6
2211-0050	20 (5)	21 (5.5)	100-415	320 x 229 x 399 (13 x 9 x 16)	1	4

► Thermo Scientific Nalgene Heavy-Duty Rectangular Carboy

high-density polyethylene, white polypropylene closure



Nalgene™ HDPE Heavy-Duty Rectangular Carboy has a space-saving, stackable design.

Rugged carboy for storing and transporting reagents and other liquids.

details

- Heavy-walled construction for durability and chemical resistance
- Graduated to contain in liters and gallons
- Design includes integral handle for easy transport and pouring
- Graduated/Leakproof†

Nalgene Heavy-Duty Rectangular Carboy

Cat. No.	Capacity, L (gal.)	Nominal Brim Capacity, L (gal.)	Closure Size, mm	L x W x H, mm (in.)	No. per Pack	No. per Case
2214-0050	20 (5)	20 (5)	70	330 x 228 x 406 (13 x 9 x 16)	1	4

► Thermo Scientific Nalgene Heavy-Duty Wide Mouth Jug

high-density polyethylene, white polypropylene closure



Nalgene™ Heavy-Duty Wide Mouth Jug features a large, 120 mm opening.

Molded-in handle and recessed bottom provide a sturdy grip when lifting and pouring. Wide stance and low center of gravity assure stability.

details

- Wide-mouth opening permits easy filling, transferring and cleaning of jugs
- Ideal for storing solids or powders
- Graduated to contain in liters and gallons
- Space-saving rectangular shape optimizes limited storage space

Nalgene Heavy-Duty Wide Mouth Jug

Cat. No.	Nominal Capacity, L (gal.)	Nominal Brim Capacity, L (gal.)	Closure Size, mm	L x W x H, mm (in.)	No. per Pack	No. per Case
2241-0050	20 (5)	25 (6.6)	120	305 x 203 x 457 (12 x 8 x 18)	1	4

► Thermo Scientific Nalgene Jerricans

high-density polyethylene, white tethered polypropylene closure



Nalgene™ HDPE Jerricans have a rugged design with wide stance and low center of gravity that provide greater stability.

details

- Integral spout is angled for easy, accurate pouring
- Includes tethered closure, preventing loss
- Graduated to contain in liters and gallons
- Molded-in handle and recessed bottom provides a sturdy grip when lifting and pouring
- Space-saving rectangular shape optimizes limited storage space
- Graduated/Leakproof†

Nalgene Jerricans

Cat. No.	Nominal Capacity, L (gal.)	Nominal Brim Capacity, L (gal.)	Closure Size, mm	L x W x H, mm (in.)	No. per Pack	No. per Case
2240-0015	6 (1.5)	8 (2)	53B	213 x 176 x 335 (8 x 7 x 13)	1	6
2240-0025	10 (2.5)	12 (3)	53B	246 x 199 x 376 (10 x 8 x 15)	1	6
2240-0050	20 (5.0)	24 (6)	53B	320 x 245 x 452 (13 x 10 x 18)	1	4

► **Thermo Scientific Nalgene 13 L Jerrican**
 high-density polyethylene with tethered polypropylene closure



Nalgene™ Jerricans have a unique double-spout design, ideal as a reservoir in automated systems.

Rugged design with wide stance and low center of gravity provides stability.

details

- 53B closure can be customized with input/output tubing, while the 38 mm closure can be used for refilling and emptying
- Molded-in handle provides a sturdy grip when carrying heavy contents
- Integral shoulder handle and molded bottom grip offers added assistance with lifting
- Molded of HDPE, offering good chemical resistance for a wide variety of solutions
- Space-saving rectangular shape optimizes limited storage space

Related products: Nalgene Quick Filling/Venting Closures (Cat. No. 2158), or Nalgene Filling/Venting Closures (Cat. No. 2162)

Additional accessories include Nalgene Barbed Bulkhead Fittings (Cat. No. 6149)

Compliance: USP Class VI FDA21 CFR 177.1520.

Nalgene 13 L Jerrican

Cat. No.	Nominal Capacity, L (gal.)	Nominal Brim Capacity, L (gal.)	Closure Size, mm	L x W x H, mm (in.)	No. per Pack	No. per Case
2243-0013	13 (3.5)	14 (3.7)	53B	290 x 189 x 378 (11 x 7 x 15)	1	4
2243-9013	13 (3.5)	14 (3.7)	53B; 38-430	290 x 189 x 378 (11 x 7 x 15)	1	4

► Thermo Scientific Nalgene Fluorinated Jerricans

high-density polyethylene, white polypropylene closure



Nalgene™ Fluorinated Jerricans have a rugged design with wide stance and low center of gravity that provide greater stability.

Fluorinated surface inside and out improves barrier properties and reduces solvent absorption while enhancing long-term container performance and prevents loss due to permeation.

details

- Includes tethered closure preventing loss
- Graduated to contain in liters and gallons
- Molded-in handle and recessed bottom provides a sturdy grip when carrying heavy contents
- Space-saving rectangular shape optimizes limited storage space
- Graduated/Leakproof†

Nalgene Jerricans

Cat. No.	Nominal Capacity, L (gal.)	Nominal Brim Capacity, L (gal.)	Closure Size, mm	L x W x H, mm (in.)	No. per Pack	No. per Case
2242-0025	10 (2.5)	12 (3)	53B	246 x 199 x 376 (10 x 8 x 15)	1	6
2242-0050	20 (5)	24 (6)	53B	320 x 245 x 452 (13 x 10 x 18)	1	4

► **Thermo Scientific Nalgene Replacement Closures for Large Carboys and Bottles**



Designed to fit Nalgene™ Carboys and Bottles to provide a guaranteed leakproof system.

details

- Fits Nalgene Large Carboys and Bottles with 53B and 83B neck finishes

Nalgene Closures for Large Carboys and Bottles; white, autoclavable

Cat. No.	Description	No. per Pack	No. per Case
712160-0384	38-430 Replacement Closure for Large Nalgene Bottles	12	12
712160-0530	53B Replacement Closure for Large Nalgene Bottles or Carboys	12	12
712160-0830	83B Replacement Closure for Large Nalgene Bottle or Carboy	2	2
712160-0053	TPE Gasket for 53B Closure	12	12
712162-1830	TPE Gasket for 83B Closure	5	5

Nalgene Replacement Closures; white high-density polyethylene

Cat. No.	Description	No. per Pack	No. per Case
712151-0053	53B Replacement Cap w/ TPE Gasket for Large Nalgene Bottles or Carboys	12	12

Nalgene Replacement Closures, high-density polyethylene

Cat. No.	Description	No. per Pack	No. per Case
712151-0083	83B Replacement Cap w/ TPE Gasket for Large Nalgene Bottles or Carboys	2	2

Nalgene Replacement Closure with Strap, white polypropylene

Cat. No.	Description	No. per Pack	No. per Case
712240-1053	53B Replacement Closure and Strap for Jerrican	10	10



► Thermo Scientific Nalgene Bioprocess Bag Management System and Accessories polycarbonate



Nalgene™ Bioprocess Bag Management Systems provides a rigid puncture-resistant protective barrier for pre-filled bioprocess bags during use and shipment.

Systems are easy to set up and nestable/stackable for space-saving storage. The contoured inner design isolates and stabilizes bag and tubing during transport.

details

- System includes generous sized tubing compartment to manage and protect tubing during storage or transport
- Molded of durable, impact resistant polycarbonate that withstands freezing and autoclave temperatures
- Systems available in transparent PC and opaque black PC for protection of light-sensitive materials
- Each set contains: (2) PC shell bodies, (4) release clips, (5) button plugs and product instructions

Compliance: Complies with ISTA 2A standards with an appropriate cold chain supply shipper.

Nalgene Bioprocess Bag Management System and Accessories

Cat. No.	Description	Capacity, L	Shell Color	O.D. x W x H, cm	No. per Case
15000-0050	Clear	5	Clear	55 x 36 x 19	4 sets
15000-0051	Opaque	5	Opaque	55 x 36 x 19	4 sets
15000-0200	Clear	20	Clear	82 x 45 x 22	2 sets
15000-0201	Opaque	20	Opaque	82 x 45 x 22	2 sets
Accessories					
15000-0003	Void Fill	----	----	----	24
15000-0004	Release Clips	----	----	----	24
15000-0005	Button Plugs	----	----	----	50



► Thermo Scientific Nunc EasyFill Cell Factory Systems polystyrene



Nunc™ EasyFill™ Cell Factory™ system is a single-use, “out-of-the-box” system with a large, vented screw closure and versatile port design for pouring and aseptic filling.

To get started, simply pour the media directly into the EasyFill Cell Factory system’s large opening. The linear, multi-layer format promotes easy scalability and is ideal for both research and commercial-scale cell culture applications.

details

- Save valuable space – each EasyFill Cell Factory 10 holds the equivalent of 36-T175 flasks
- Enhance productivity with 5X faster fill and empty times vs. T175 flasks
- Achieve fast start-up – no accessories required with EasyFill Cell Factory systems
- Certified Nunclon Delta surface ensures consistent growth layer to layer, lot to lot

Nunc EasyFill Cell Factory Systems

Cat. No.	Type	No. of Layers	Culture Area, cm ²	No. per Pack	No. per Case
140000	EasyFill Cell Factory System	1	632	1	6
140250	EasyFill Cell Factory System	2	1264	1	6
140360	EasyFill Cell Factory System	4	2528	1	4
140400	EasyFill Cell Factory System	10	6320	1	2
140410	EasyFill Cell Factory System	10	6320	1	6
140440	EasyFill Cell Factory System	40	25,280	1	2

► Thermo Scientific Nunc EasyFill Cell Factory Accessories



Nunc™ EasyFill™ Cell Factory™ Accessories support the use of aseptic methods for fluid handling related to filling, inoculation, feeding and harvesting of the EasyFill Cell Factory system.

It is now easier than ever to create a Nunc EasyFill Cell Factory system for your specific application.

details

- Plug a media bag or tubing set into any Cell Factory system making connections easy
- All accessories are gamma irradiated and individually wrapped eliminating the need for in-house cleaning processes and validations
- Prevent build up of back pressure during filling application with vent filter assemblies



EasyFill adaptor closures



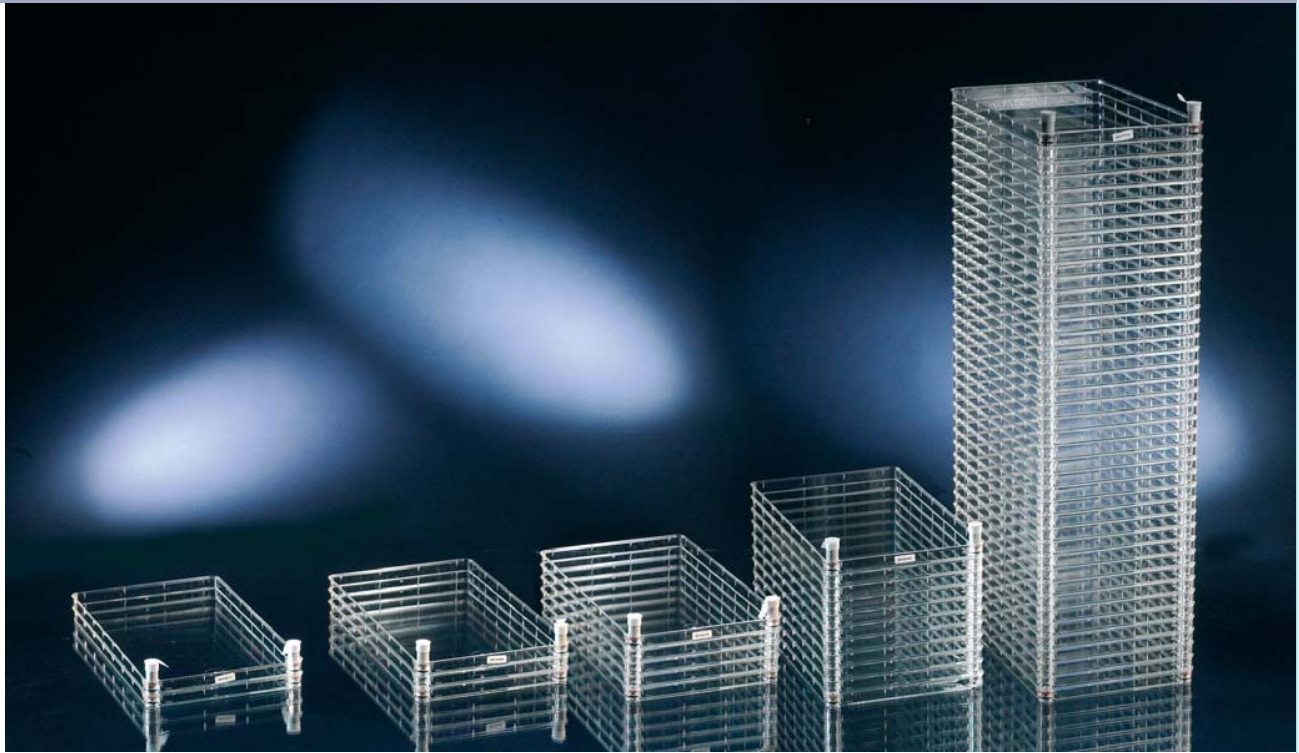
EasyFill filter assemblies



EasyFill vent caps

Nunc EasyFill Cell Factory Accessories

Cat. No.	Description	Material	No. per Pack	No. per Case
140065	EasyFill Cell Factory Adaptor closure with 1/2 in. Barb, Irradiated	High-density polyethylene	1	12
140085	EasyFill Cell Factory Closure with 1/4 in. Barb, Irradiated	High-density polyethylene	1	12
140086	EasyFill Cell Factory Closure with 3/8 in. Barb, Irradiated	High-density polyethylene	1	12
140067	EasyFill Cell Factory Filter Assembly, 37 mm, 1.0 µm, Irradiated	High-density polyethylene	1	2
140080	EasyFill Cell Factory Filter Assembly, 200 cm ² , 0.22 µm, Irradiated	High-density polyethylene	1	2
146008	Replacement Vent Cap; Sterile	High-density polyethylene	1	10



► Thermo Scientific Nunc Cell Factory Systems polystyrene

The original Nunc™ Cell Factory™ system is the proven solution for large-scale production of cells, vaccines and therapeutic proteins – with the same growth kinetics as laboratory-scale cell culture products.

Available in 1-, 2-, 4-, 10- and 40-tray versions, the ports of the original Cell Factory system make it easy to customize and create a closed system with the use of custom tubing assemblies that facilitate venting, filling and harvesting.

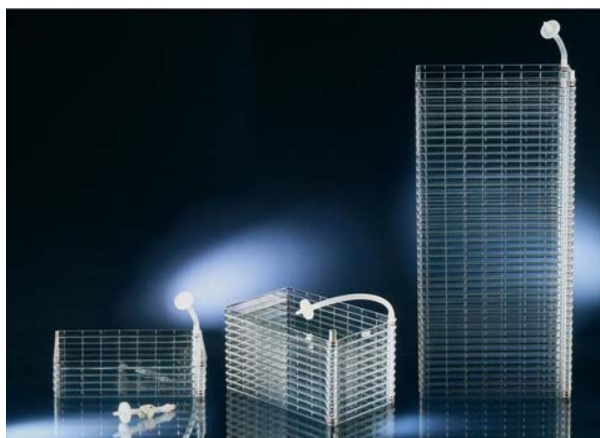
details

- Ideal for adherent cells
- Boost production efficiency with more surface area in a small footprint
- Reduce contamination risks with a closed system
- Experience faster results and lot-to-lot consistency
- Certified Nunclon™ Delta™ surface ensures consistent growth, layer to layer

Nunc Cell Factory Systems

Cat. No.	Type	No. of Layers	Culture Area, cm ²	No. per Pack	No. per Case
165250	Original Cell Factory System	1	632	1	8
167695	Original Cell Factory System	2	1264	1	6
140004	Original Cell Factory System	4	2528	1	10
164327	Original Cell Factory System	10	6320	1	2
170009	Original Cell Factory System	10	6320	1	6
139446	Original Cell Factory System	40	25,280	1	2

► Thermo Scientific Nunc Cell Factory System with Active Gassing polystyrene



Nunc™ Cell Factory™ System with Active Gassing ensures a controlled, contamination-free atmosphere in each culture tray by equally distributing the user-specified gas mixture.

The system creates an ideal environment for culturing oxygen-consuming and pH sensitive cells. Available in 4-, 10- and 40-tray models.

details

- Achieve greater yields with controlled cell culture environments
- Optimize production capacity without changing cell culture platforms
- Certified Nunclon Delta surface ensures consistent growth layer to layer, lot to lot

Nunc Cell Factory System with Active Gassing

Cat. No.	Type	No. of Layers	Culture Area, cm ²	No. per Pack	No. per Case
173240	Cell Factory System with Active Gassing	4	2528	1	10
173239	Cell Factory System with Active Gassing	10	6320	1	6
173238	Cell Factory System with Active Gassing	40	25,280	1	2

► Thermo Scientific Nunc Cell Factory Accessories



Filter adapter cap and 1.0 µm airvent filter

Nunc™ Cell Factory™ Accessories supports the use of aseptic methods for fluid handing relating to filling, inoculation, feeding and harvesting of the Cell Factory system.

These accessories enable the further development of applications requiring a more closed cell culture system, reducing the number of open interventions.

details

- Plug a media bag or tubing set to any Cell Factory system for enhanced aseptic connectivity for filling and harvesting
- Prevent build up of back pressure during filling application
- Venting options provide additional air venting when filling and harvesting by gravity or with a peristaltic pump



Airvent filters with HDPE connector



HDPE connector



Blue cover caps



Filling tubing set

Nunc Cell Factory Accessories

Cat. No.	Description	No. per Pack	No. per Case
173248	Airvent filter, 1.0 µm with HDPE connector, Sterile	1	2
179553	Airvent filter, 1.0 µm, Sterile	1	10
173249	Airvent filter, 0.22 µm, with HDPE connector, Sterile	1	2
167525	Filter Adaptor Cap; Sterile	1	20
170615	Blue Cover Cap; Sterile	2	40
140099	PC connector	10	10
171840	HDPE connector	10	10
173250	Teflon® connector, Autoclavable	2	2
140120	Cell Factory Filling Tubing Set, irradiated	1	2

Teflon® is a registered trademark of DuPont used under license by Nalge Nunc International Corp.

► Thermo Scientific Nunc Cell Factory Start-Up Kit



The Nunc™ Cell Factory™ Start-Up Kit supports the use of aseptic methods for fluid handling related to filling, inoculation, feeding and harvesting of the Cell Factory system.

These accessories enable the further development of applications requiring a more closed cell culture system, reducing the number of open interventions.

details

- Features several items routinely used in the setup of a cell factory, including HDPE connector, two cover caps, two blue sealing caps, No. 4210 bacterial air vent filter, tubing and clamp
- All items are sterile

Nunc Cell Factory Start-Up Kit

Cat. No.	Description
170769	Start-up kit for use with Nunc Cell Factory Systems

► Thermo Scientific Nunc Cell Factory Hand Manipulator stainless steel



Nunc™ Cell Factory™ Hand Manipulators are designed for the safe and efficient handling of Cell Factory 10 and 40 layer systems.

The Cell Factory Hand Manipulator is mobile and includes a foot brake for safe placement. The Cell Factory 10 Hand Manipulator is compact and ideal for use within in a biosafety cabinet.

details

- Constructed of stainless steel, designed for use in clean room environments

Nunc Cell Factory Hand Manipulator

Cat. No.	Description
176953	Cell Factory 40 Hand Manipulator
132752	Cell Factory 10 Hand Manipulator



► Thermo Scientific Nunc Automatic Cell Factory Manipulator (ACFM) stainless steel

Nunc™ ACFM automates the filling and harvesting of four Nunc Cell Factory™ 40 or 12 Nunc Cell Factory 10 systems.

details

- Constructed of AISI 316 8 mm stainless steel and designed for use in clean room environments
- For large scale cell culture and production of vaccines, cell therapeutics or other biological products
- Available with or without safety light curtain

Related products: Side Loading Rack with Cart for Cell Factory 40 System (Cat. No. 140503), Side Loading Rack with Cart for Cell Factory 10 Systems (Cat. No. 140504).

Compliance: The ACFM complies with safety requirements of the following standards and guidelines: EC Machinery Directive 2006/42/EC (Cat. No. 120351 only) and EC Machinery Directive 2004/108/EC.

Nunc Automatic Cell Factory Manipulator (ACFM)

Cat. No.	Description	Electrical Requirements
120351	ACFM GEN 10 w/ Safety Light Curtain and Membrane Control Panel	3/N/PE, 400V 50Hz
120352	ACFM GEN 10 w/ Membrane Control Panel	3/N/PE, 230V 60Hz
120353	ACFM GEN 10 w/ Membrane Control Panel	3/N/PE, 208V 60Hz
120354	ACFM GEN 10 w/ Membrane Control Panel	3/N/PE, 480V 60Hz
Accessories		
132847	Retrofit Safety light curtain for ACFM Gen 10	

► Thermo Scientific Nunc Cell Factory Shaker System

stainless steel



The Nunc™ Cell Factory™ Shaker System offers an automated solution for the detachment of cells from Nunc Cell Factory Systems.

details

- Eliminates traditional need for manual methods for cell detachment, such as shaking and pounding
- Performs a continuous horizontal accelerated and decelerated movement to the Cell Factory System
- Adjustable frequency of the shaking
- Designed to easily load and unload Cell Factory carts

Ordering Information: For use with Nunc Cell Factory Side Loading Rack with Cart, please order the Retrofit Clamping Kit (Cat. No. 120289).

Related products: Side Loading Rack with Cart for Cell Factory 40 System (Cat. No. 140503), Side Loading Rack with Cart for Cell Factory 10 Systems (Cat. No. 140504), Retrofit Clamping Kit for Racks for use with shaker (Cat. No. 120289).

Compliance: The Cell Factory Shaker complies with the safety requirements of the following standards and guidelines: Machinery Directive 98/37/EC, Low Voltage Directive 2006/96/EC, EMC Directive 2004/108/EC.

Nunc Cell Factory Shaker System

Cat. No.	Description	Electrical Requirements
132849	Cell Factory Shaker GEN 2	208.240V, 50/60Hz, Single Phase
120289	Retro Clamping Kit for Racks for use with Shaker	



► Thermo Scientific Nunc Cell Factory Incubators

stainless steel



Nunc™ incubator is a mobile solution for the incubation of Nunc Cell Factory™ Systems.

details

- Accommodates four racks of Cell Factory 40 or Cell Factory 10 Systems
- Incubator floor height accommodates the easy loading and unloading of Cell Factory carts
- Available with and without CO₂ control
- Maintains temperature 5°C above ambient to 50°C
- Maintains CO₂ 0-20% +/- 0.5% (Cat. No. 120300)
- Equipped with warning and alarm systems

Related products: Side Loading Rack with Cart for Cell Factory 40 System (Cat. No. 140503), Side Loading Rack with Cart for Cell Factory 10 Systems (Cat. No. 140504).

Compliance: Our incubators are manufactured in accordance with CE guidelines, and meet the requirements of IEC 6110.

Nunc Cell Factory Incubators

Cat. No.	Description	Electrical Requirements
120100	Cell Factory Incubator, Gen 5	208.240V, 50/60Hz, Single Phase
120300	Cell Factory Incubator with CO ₂ control, Gen 5	208.240V, 50/60Hz, Single Phase

► Thermo Scientific Nunc Cell Factory Racks and Carts

stainless steel



Nunc™ Cell Factory™ Rack and Carts are designed to perfectly integrate with all Nunc Cell Factory equipment.

details

- Constructed of AISI 316 stainless steel
- Designed for use in clean room environments
- Side loading design for easy loading and unloading
- Available for use with Cell Factory 40 and Cell Factory 10 Systems
- Holds four Cell Factory 40- or 12-Cell Factory 10 System

Nunc Cell Factory Racks and Carts

Cat. No.	Description
140503	Side Loading Rack with Cart for Cell Factory 40
140504	Side Loading Rack with Cart for Cell Factory 10
120289	Retro Clamping Kit for Racks for use with Shaker

► Thermo Scientific Nunc TufRol Roller Bottles

polystyrene, high-density polyethylene closures



Nunc™ TufRol™ PS Roller Bottles provide reliability and reproducibility necessary for laboratory and industrial scale applications, including vaccines, cell culture expansion and the production of other biologics.

Minimize validation of cell culture scale-up processes from plates to flasks to roller bottles by choosing a family of products that utilize polystyrene materials.

details

- One-piece seamless design reduces possibility of leaking through a seam
- Shallow and deep indents at bottom make the roller bottle excellent for both manual and automated handling
- Proprietary manufacturing process gives greater impact resistance
- Vertical pleat orientation facilitates emptying and reduces retention of product



Nunc TufRol Roller Bottles

Cat. No.	Description	Surface Area, cm ²	No. per Pack	No. per Case
181702	Roller Bottle, smooth surface, vented	850	2	20
182702	Roller Bottle, smooth surface	850	2	20
182720	Roller Bottle, smooth surface	850	20	20
182744	Roller Bottle, smooth surface	850	20	20, Double-bagged
183302	EZ Roller Bottle, smooth surface, shallow indent, vented	850	2	20
183902	EZ Roller Bottle, smooth surface, deep indent, vented	850	2	20
184302	EZ Roller Bottle, smooth surface, shallow indent	850	2	20
184344	EZ Roller Bottle, smooth surface, shallow indent	850	20	20, Double-bagged
184902	EZ Roller Bottle, smooth surface, deep indent	850	2	20, Double-bagged
184920	EZ Roller Bottle, smooth surface, deep indent	850	20	20
184944	EZ Roller Bottle, smooth surface, deep indent	850	20	20, Double-bagged
141744	Roller Bottle, pleated surface, vented	1450	20	20, Double-bagged
142720	Roller Bottle, pleated surface	1450	20	20
142744	Roller Bottle, pleated surface	1450	20	20, Double-bagged



Replacement Closures for Nunc TufRol Roller Bottles

Cat. No.	Description	Material	No. per Pack	No. per Case
111250	Vented Closures	HDPE	250	500
112250	Easy on/off Closures	HDPE	250	500



► **Thermo Scientific Nunc InVitro Roller Bottles**
polyethylene terephthalate copolyester, high-density polyethylene closures

Nunc™ InVitro™ PETG Roller Bottles increase cell expansion and product yield without the need to purchase additional production equipment or increase labor. For laboratory and industrial scale applications including vaccines, cell culture expansion and the production of other biologics.

details

- Molded of durable, virtually unbreakable PETG, offering the safest roller bottle solution on the market today
- Can be frozen down to -40°C; supports freeze/thaw cell release methods, reducing reliance on trypsin
- Wide range of surface areas from 1050 cm² to 4200 cm², providing solutions for all scales
- Quick-action ergonomic closure reduces wrist strain and increases productivity
- Lot number on every bottle for full traceability

Nunc InVitro Roller Bottles

Cat. No.	Description	Surface Area, cm ²	No. per Pack	No. per Case
1060-05	1.2X Roller Bottle, smooth surface	1050	5	20
1060-20	1.2X Roller Bottle, smooth surface	1050	20	20
1060-50	1.2X Roller Bottle, smooth surface, Poly-D-Lysine coated	1050	20	20
1060-85	1.2X Roller Bottle, smooth surface, vented	1050	5	20
1760-20	2X Roller Bottle, pleated surface	1700	20	20
1860-22	1XL Roller Bottle, smooth surface	1800	22	22
2160-05	2.5X Roller Bottle, pleated surface	2100	5	20
2160-20	2.5X Roller Bottle, pleated surface	2100	20	20
4260-22	5X Roller Bottle, pleated surface	4200	22	22

Replacement Closures for Nunc InVitro Roller Bottles

Cat. No.	Description	Material	No. per Pack	No. per Case
3080-01	Vented Quick Action Replacement Closures, 48 mm	HDPE	1	300

Thermo Scientific Products –
meeting the challenges of science and industry

shakers

Reproducible results, each and every time.

Thermo Scientific MaxQ shakers ensure your effectiveness and productivity with a wide range of analog and digital shaker offerings. With a product portfolio that includes incubated and refrigerated offerings, available as stackable benchtop and floor model units, we make it easy to find the right shaker solution for your laboratory. Features like our triple eccentric drive mechanisms provide continuous 24-hour operation, and allow you to shake large and uneven loads smoothly and uniformly.

MaxQ shakers are a perfect fit to a broad range of applications, from general mixing, cell culture and solubility studies to bacterial suspensions, staining/destaining and hybridization.



For more product information, go to:
www.thermoscientific.com/shakers

► **Thermo Scientific Nalgene Sterile Single Use Erlenmeyer Flasks**
polyethylene terephthalate copolyester, white high-density polyethylene closures



Nalgene™ PETG Flasks are ideal for suspension cell culture, media preparation, mixing and storage.

The sterile, single-use flasks are made of light, break resistant, crystal clear PETG. All sizes are available vented or non-vented and with plain bottom or with baffled bottom for use on the bench top or shaker table.

details

- Sterile and single use: reduce contamination risk
- Robust and break resistant: increase personal safety
- Collapses when autoclaved: reduce bio hazardous waste
- Graduated for quick volume assessment
- Supported by extensive validation documentation

Nalgene Sterile Single Use Erlenmeyer Flasks with Baffled Bottom

Cat. No.	Working Capacity, mL	Neck Finish, mm	Bottom Style	No. per Pack	No. per Case
Vented Closure					
4115-0125	125	38-430	Plain	1	24
4115-0250	250	38-430	Plain	1	12
4115-0500	500	45-430	Plain	1	12
4115-1000	1000	45-430	Plain	1	6
4115-2000	2000	45-430	Plain	1	4
4115-2800	2800	70	Plain	1	4
4116-0125	125	38-430	Baffled	1	24
4116-0250	250	38-430	Baffled	1	12
4116-0500	500	45-430	Baffled	1	12
4116-1000	1000	45-430	Baffled	1	6
4116-2000	2000	45-430	Baffled	1	4
4116-2800	2800	70	Baffled	1	4
Solid Closure					
4112-0125	125	38-430	Plain	1	24
4112-0250	250	38-430	Plain	1	12
4112-0500	500	45-430	Plain	1	12
4112-1000	1000	45-430	Plain	1	6
4112-2000	2000	45-430	Plain	1	4
4112-2800	2800	70	Plain	1	4
4113-0125	125	38-430	Baffled	1	24
4113-0250	250	38-430	Baffled	1	12
4113-0500	500	45-430	Baffled	1	12
4113-1000	1000	45-430	Baffled	1	6
4113-2000	2000	45-430	Baffled	1	4
4113-2800	2800	70	Baffled	1	4

► Thermo Scientific Nalgene Vented Closures for Sterile Single Use Erlenmeyer Flasks

high-density polyethylene



Nalgene™ Vented Closures for Sterile Single Use Erlenmeyer Flasks provide sterile gas exchange for shaker and suspension cell cultures.

details

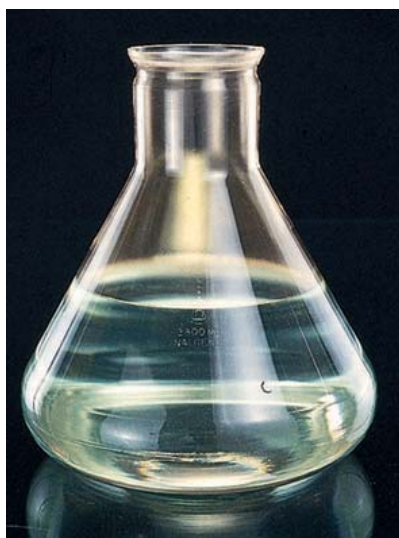
- Blue HDPE with hydrophobic 0.2 µm PTFE membrane
- Permits gas exchange without unscrewing closure
- Membrane is heat welded into place for effective sealing
- Sterile

Nalgene Vented Closures for Sterile Single Use Erlenmeyer Flasks

Cat. No.	Description	No. per Pack	No. per Case
4114-0038	Vent Closures for 125 mL and 250 mL Erlenmeyer Flasks	1	12
4114-0045	Vent Closures for 500 mL, 1 L and 2 L Erlenmeyer Flasks	1	12

► Thermo Scientific Nalgene Fernbach Culture Flask

polycarbonate



Nalgene™ Fernbach Culture Flask is constructed of durable, transparent polycarbonate.

details

- Break-resistant, transparent PC; safer than glass alternatives
- Fernbach design supports better aeration for the culturing of microorganisms
- For leakproof seal, use No. 12 rubber stopper

Nalgene Fernbach Culture Flask

Cat. No.	Working Capacity, L	No. per Pack	No. per Case
4105-2800	2.8	1	4

► Thermo Scientific Nalgene Magnetic Culture Vessel

polycarbonate, polypropylene closures, Teflon® TFE stir bar, polypropylene/TFE stirring assembly



Nalgene™ Magnetic Culture Vessels are designed for efficient top-to-bottom mixing at low speeds.

Lightweight and break resistant, these vessels are excellent for use on magnetic stir plates. Two magnetic stir bars are included – small for bacteria and large for mammalian cells.

details

- Includes two ports for easy access to cultures
- Magnetic stir bar keeps cells suspended at low stirring speeds, minimizing shear
- Adjustable impeller height supports process modifications
- Molded of lightweight and durable PC; safer than glass alternatives

Teflon® is a registered trademark of DuPont used under license by Nalge Nunc International Corp.

Nalgene Magnetic Culture Vessel

Cat. No.	Working Capacity, L	No. of Ports	No. per Case
2605-0001	1	2 x 38-430	1

► Thermo Scientific Nalgene Culture Vessel with Ports

polycarbonate, white polypropylene closures



Nalgene™ Culture Vessels feature four ports supporting easy access to your suspension cultures. Economical, lightweight and break-resistant.

details

- Molded of transparent PC for easy viewing of your cultures
- Graduated in 0.5 L increments from 3 to 12 L
- For use with overhead drive mixers and lower assemblies for top to bottom mixing
- Port accessories are available; ports accept any Nalgene 38-430 size closure
- Non-cytotoxic, autoclavable and USP Class VI compliant

Nalgene Culture Vessel with Ports

Cat. No.	Working Capacity, L	No. of Ports	No. per Case
2600-0012	12	4 x 38-430	1

► Thermo Scientific Nalgene Probe Adapter Closure

polypropylene, silicone gasket



Nalgene™ Probe Adapter Closures allow for insertion of 7 to 14 mm diameter probes into Thermo Scientific Nalgene Culture Vessels and Bottles with 38-430 neck finishes.

Provides controlled access to the interior of culture vessels.

details

- Molded of autoclavable PP; ready for in-house sterilization
- Includes a silicone gasket to ensure a leakproof seal
- Allows insertion of 7 to 14 mm diameter probes into 1 and 12 L culture vessels
- Ideal for use with any Nalgene bottle or culture vessel with a 38-430 neck finish

Nalgene Probe Adapter Closure

Cat. No.	Description	No. per Case
2145 0384	38-430 Probe Adaptor Closure	2

► Thermo Scientific Nalgene Closures with Barbed Bulkhead Fittings

polypropylene



Nalgene™ Closures with Barbed Bulkhead Fittings support the integration of tubing sets to Nalgene culture vessels.

Promotes the customization of Nalgene culture vessels for aseptic transfer of liquids.

details

- Size 38 mm-430 closures are pre-drilled allowing for easy, safe in-house assembly
- Barbed bulkhead fittings also sold separately (Cat. Nos. 6149-0001 and 6149-0002)
- Molded of autoclavable PP, ready for in-house sterilization

Nalgene Closures with Barbed Bulkhead Fittings

Cat. No.	Description	No. per Case
DS2167-0001	38-430 closure with 1/2 in. I.D. barbed fitting	4
DS2167-0002	38-430 closure with 1/4 in. I.D. barbed fitting	4

► Thermo Scientific Nalgene Autoclavable Septum Closures

thermoplastic elastomer



Nalgene™ Autoclavable Septum Closures allow aseptic injection of reagent or sample withdrawal without compromising sterility or integrity of contents.

Suitable for use with any bottle or container with 38-430 neck, including Nalgene culture vessels.

details

- Use with 18-gauge or smaller needles for aseptic injection of reagent or sample withdrawal without compromising sterility or integrity of contents
- Autoclavable

Alerts: For laboratory use only; not for in-vitro diagnosis or parenterals.

Nalgene Autoclavable Septum Closures

Cat. No.	Description	No. per Case
DS2168-0384	38-430 Autoclavable Septum Closures	12

► Thermo Scientific Nunc 2D MicroHex Microcarriers

polystyrene



Nunc™ 2D MicroHex™ are sterile, ready-to-use, solid, non-swelling, non-porous and non-absorbing microcarriers for adherent cell culture.

Sterile, ready-to-use, solid, non-swelling, non-porous and non-absorbing microcarriers for adherent cell culture.

details

- Shape and low density (1.05 g/cm³) of the particles allows them to be kept in suspension at low stirring speeds
- Features certified Nunclon™ Delta™ surface, supporting scale up from Nunc cell culture dishes and flasks
- Very low displacement volume/unit surface area
- Gamma sterilized and ready for use – no conditioning required

Nunc 2D MicroHex Microcarriers

Cat. No.	Grams per Bottle	Culture Area, cm ² (per Bottle)	No. Bottles per Case
139102	2	1500	10
139104	10	7500	5
139106	20	15,000	5
139108	100	75,000	2

Thermo Scientific Products –
meeting the challenges of science and industry

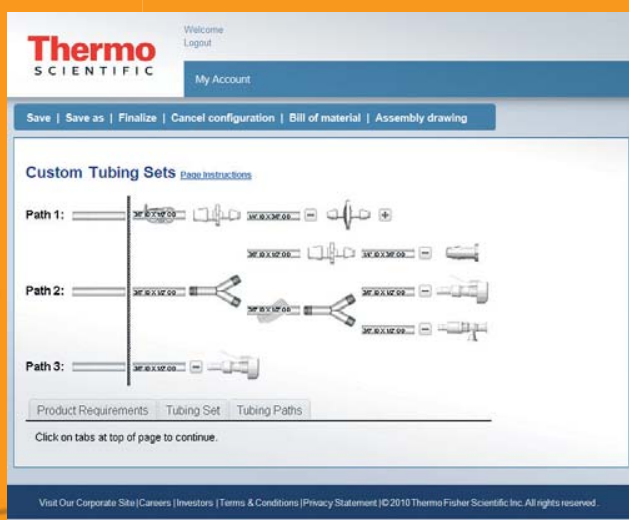
custom online tubing set configurator

See how easy it is to build a customized tubing solution. The Thermo Scientific Custom Online Tubing Set Configurator uses an intelligent, rules-based engine for a “no-fail” approach, ensuring that even highly complex designs can be manufactured and delivered in a timely manner. Watch your tubing set grow with each choice within the new interactive design window.

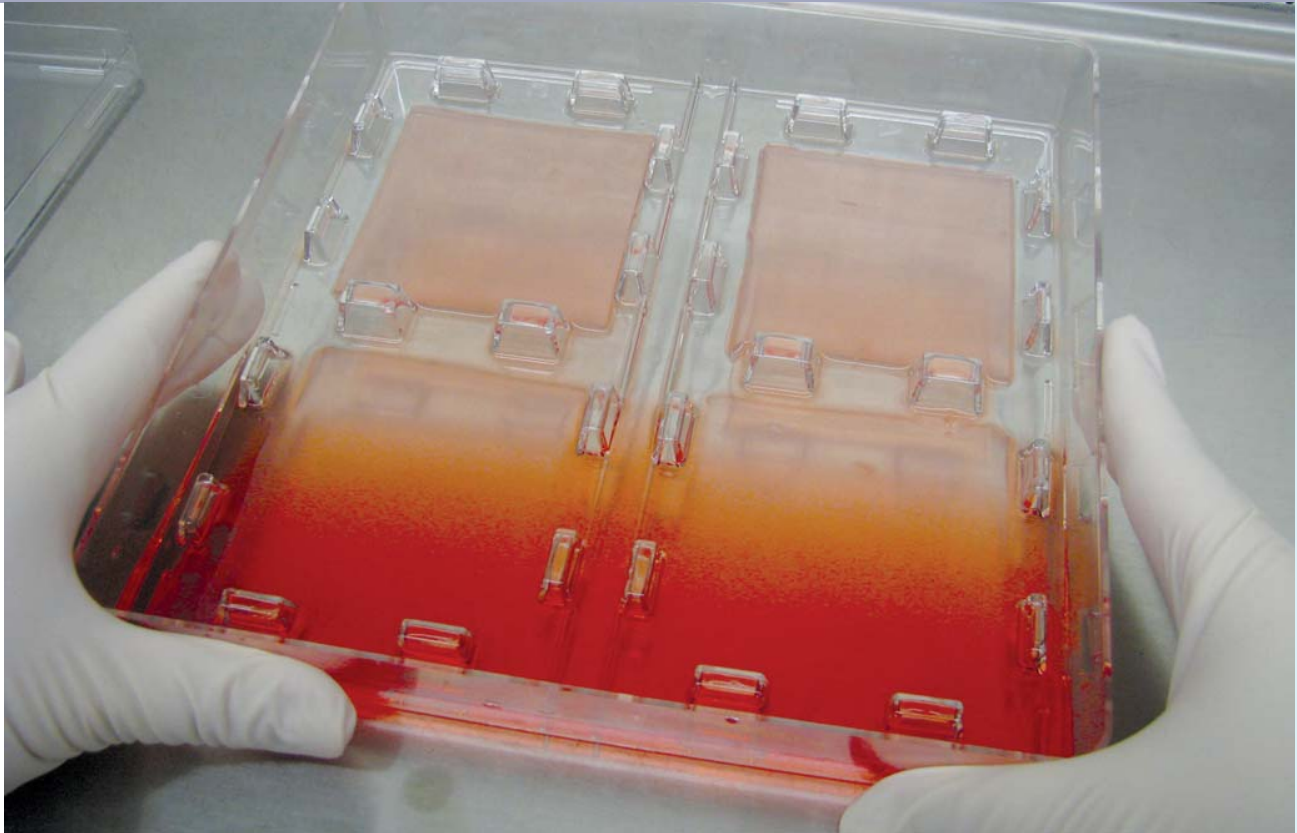
Your personal “My Designs” library allows you to save designs for future reference, modification and finalization.

Use the Custom Online Tubing Set Configurator to:

- design your custom tubing set
- receive detailed 2D specification drawings
- obtain comprehensive bill of materials and quotations
- order with confidence



To find out more about custom solutions, go to
www.thermoscientific.com/tubingconfigurator



► Thermo Scientific Nunc Skin Graft Cell Culture Dish polystyrene

The Nunc™ Skin Graft Cell Culture Dish is specially designed to support growth of skin and other grafts.

details

- Four chambers in one sterile (10^{-6} SAL) dish increase throughput and efficiency of skin graft production
- Ribbed 3 x 3 in. chambers separate and stabilize grafts during production, preventing them from growing into or on top of each other
- Filling channel between chambers allows media to be added without disrupting grafts
- Footprint permits automated initial cell seeding onto sponges – reducing labor costs and risk of contamination while increasing consistency

Nunc Skin Graft Cell Culture Dish

Cat. No.	Description	No. per Pack	No. per Case
149001	Skin Graft Dish, four 3 x 3 in. growth chambers	2	8

► Thermo Scientific Nalgene Top Works Fluid Transfer Systems



Nalgene™ Top Works™ Fluid Transfer Systems are aseptic handling solutions for pharmaceutical, biotechnology and laboratory liquid transfer applications.

Customize Thermo Scientific Nalgene bottles and carboys with closures, including platinum cured silicone stopper inserts and tubing. Available with various ports, tubing lengths and closure sizes.

details

- Closures are specifically designed to mate with most Nalgene bottles and carboys
- Leakproof systems for secure, aseptic handling of high-valued products compared to pouring
- Includes long tubing lengths, both inside and outside the container to support the integration to most Nalgene bottles and carboys
- Ready to accept additional fluid transfer components such as aseptic connectors and air vent filters

Ordering Information: One system per case.

Compliance: USP Class VI.

Nalgene Top Works Fluid Transfer Systems

Cat. No.	Closure Size, mm	No. of Ports	Port I.D. Size, in. (mm)	No. per Case
2135-3803	38-430	3	1-1/4 (6.35), 2-1/8 (3.18)	1
2135-5300	53B	None (solid insert)	—	1
2135-5302	53B	2	2-1/4 (6.35)	1
2135-5303	53B	3	1-1/8 (3.18), 2-1/4 (6.35)	1
2135-8300	83B	None (solid insert)	—	1
2135-8302	83B	2	1-1/4 (6.35)	1
2135-8303	83B	3	1-3/8 (9.52), 2-1/4 (6.35)	1
2132-1003†	GL45 PSF	3	1-1/8 (3.18), 2-1/4 (6.35)	1

† GL45 closure system for Schott™, Corning™ and Wheaton™ media bottles

► Thermo Scientific Nalgene Platinum-Cured Silicone Tubing



Nalgene™ Platinum-Cured Silicone Tubing is flexible, durable, translucent, high purity tubing designed for a variety of pump and transfer applications, including pharmaceutical, laboratory, bioprocess manufacturing and food and beverage.

details

- Tasteless, odorless, non-cytotoxic, non-pyrogenic and non-hemolytic
- Contains no phthalate plasticizers or peroxides that can leach out into transported fluid
- Low-binding surface minimizes absorption of proteins and food products
- Autoclavable; also can be sterilized by gamma radiation, EtO and chemical procedures
- Durometer hardness: Shore A, 50

Ordering Information: Double-bagged in case of 50 ft. (15.2 m).

Compliance: Meets FDA, USDA, U.S. Pharmacopeia Class VI, 24th Edition requirements for plastic materials; and 3A sanitary standards.

Notes: Not intended for invasive use.

Nalgene Platinum-Cured Silicone Tubing

Cat. No.	I.D. x O.D. x Wall, in. (mm)	Max. Press. psig at 73°F; 23°C	Max. Press. psig at 320°F; 160°C	Length per Case, ft. (m)
8060-0020	1/16 x 1/8 x 1/32 (1.59 x 3.18 x 0.79)	15	9	50 (15.2)
8060-0030	1/8 x 1/4 x 1/16 (1.59 x 3.18 x 0.79)	21	12	50 (15.2)
8060-0040	3/16 x 5/16 x 1/16 (4.76 x 7.94 x 0.79)	13	8	50 (15.2)
8060-0050	3/16 x 3/8 x 3/32 (4.76 x 9.53 x 2.38)	14	8	50 (15.2)
8060-0060	1/4 x 3/8 x 1/16 (6.35 x 9.53 x 0.79)	12	7	50 (15.2)
8060-0070	1/4 x 7/16 x 3/32 (6.35 x 11.11 x 2.38)	17	10	50 (15.2)
8060-0080	1/4 x 1/2 x 1/8 (6.35 x 12.7 x 3.18)	17	10	50 (15.2)
8060-0100	5/16 x 1/2 x 3/32 (7.94 x 12.7 x 2.38)	16	10	50 (15.2)
8060-0120	3/8 x 1/2 x 1/16 (9.53 x 12.7 x 0.79)	11	7	50 (15.2)
8060-0130	3/8 x 9/16 x 3/32 (9.53 x 14.29 x 2.38)	12	7	50 (15.2)
8060-0140	3/8 x 5/8 x 1/8 (9.53 x 15.88 x 3.18)	14	8	50 (15.2)
8060-0190	1/2 x 11/16 x 3/32 (12.7 x 17.46 x 2.38)	10	6	50 (15.2)
8060-0200	1/2 x 3/4 x 1/8 (12.7 x 19.05 x 3.18)	12	7	50 (15.2)
8060-0260	5/8 x 7/8 x 1/8 (15.88 x 22.23 x 3.18)	12	7	50 (15.2)
8060-0310	3/4 x 1 x 1/8 (19.05 x 25.4 x 3.18)	9	5	50 (15.2)

► Thermo Scientific Nalgene Platinum-Cured Silicone Tubing for Peristaltic Pumps



Nalgene™ Platinum-Cured Silicone Tubing for Peristaltic Pumps is flexible, durable, translucent high-purity tubing designed for a variety of pump and transfer applications including pharmaceutical, laboratory, bioprocess manufacturing and food and beverage.

details

- Tasteless, odorless, non-cytotoxic, non-pyrogenic and non-hemolytic
- Contains no phthalate plasticizers or peroxides that can leach out into transported fluid
- Low-binding surface minimizes absorption of proteins and food products
- Autoclavable; also can be sterilized by gamma radiation, EtO and chemical procedures
- Durometer hardness: Shore A, 50

Ordering Information: Double-bagged in case of 25 ft. (7.6 m).

Compliance: Meets FDA, USDA, U.S. Pharmacopeia Class VI, 24th Edition; and 3A sanitary standards.

Notes: Not intended for invasive use.

Nalgene Platinum-Cured Silicone Tubing for Peristaltic Pumps

Cat. No.	Pump Tube Size	Hose Barb I.D., in. (mm)	Length per Case, ft (m)
8060-3015	No. 15	3/16 (4.76)	25 (7.6)
8060-3016	No. 16	1/8 (3.18)	25 (7.6)
8060-3017	No. 17	1/4 (6.35)	25 (7.6)
8060-3018	No. 18	5/16 (7.94)	25 (7.6)
8060-3024	No. 24	1/4 (6.35)	25 (7.6)
8060-3025	No. 25	3/16 (4.76)	25 (7.6)
8060-3173	No. 73	3/8 (9.53)	25 (7.6)
8060-3182	No. 82	1/2 (12.7)	25 (7.6)

► **Thermo Scientific Nalgene Braided Platinum-Cured Silicone Tubing**



Nalgene™ Braided Platinum-Cured Silicone Tubing is durable, high-purity tubing designed for a variety of pump and transfer applications including pharmaceutical, laboratory, bioprocess manufacturing and food and beverage applications.

Manufactured with interwoven polyester braid for added safety, pressure and kink resistance.

details

- Contains no phthalate plasticizers or peroxides that can leach out into transported fluid
- Low-binding surfaces minimizes absorption of proteins and food products
- Tasteless, odorless, non-cytotoxic, non-pyrogenic, and non-hemolytic
- Autoclavable; also can be sterilized by gamma radiation, ETO and chemical procedures
- Durometer hardness: Shore A, 65

Ordering Information: Double-bagged in 25 ft. (7.6 m) cases.

Compliance: Meets FDA, USDA, U.S. Pharmacopeia Class VI, 24th Edition requirements for plastic materials; and 3A sanitary standards.

Nalgene 65 Braided Platinum-Cured Silicone Tubing

Cat. No.	I.D. x O.D. x Wall, in. (mm)	Max. Press. psig		Length per Case, ft. (m)
		at 73°F; 23°C	at 320°F; 160°C	
8061-3070	1/4 x 9/16 x 5/32 (6.35 x 14.29 x 3.97)	156	78	25 (7.6)
8061-3130	3/8 x 21/32 x 5/32 (9.52 x 16.67 x 3.97)	136	68	25 (7.6)
8061-3190	1/2 x 13/16 x 5/32 (12.7 x 20.64 x 3.97)	126	63	25 (7.6)

Thermo Scientific Products –
meeting the challenges of science and industry

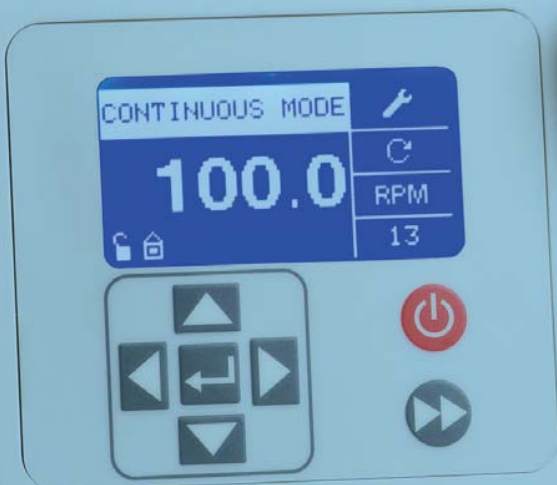
FH pumps & flowmeters

Proven leadership in fluid handling and flow control technology.

Designed to handle a wide range of fluids, from the highest purity to extremely caustic solutions, our pumps are used in a broad range of critical applications that include cell-culture, tangential flow filtration, chromatography, dispensing and more.

Our pumps deliver valuable features and benefits to ensure reliable, long-term performance:

- Ergonomic design
- Broad operating range
- Ease of use and maintenance



For more product information, go to:
www.thermoscientific.com/fluidhandling

► **Thermo Scientific Nalgene Quick-Filling/Venting Closures**
polypropylene, TPE gasket



Nalgene™ Quick Filling/Venting closures feature quick-disconnect fittings with tubulation for attachment to the tubing of choice.

Customizable ported 83B closure features panel-mounted, quick-disconnect fittings and inside/outside barbed fittings. Designed as a ready-made alternative to cumbersome in-house filling/dispensing solutions.

details

- Available in 2 or 3 port styles for 1/4 or 3/8 in. (6.35 mm or 9.53 mm) tubing – offering an ideal platform for customization of your Nalgene Bottle or Carboy
- Container integrity is assured with internal valve style quick-disconnect fittings
- Ideal for use in vacuum systems with Nalgene Heavy-Duty Vacuum Carboys and Bottles (Cat. Nos. 2226 and 2126)
- Use with Nalgene 180 heavy-wall tubing (Cat. Nos. 8000-0145 or 8000-0065)
- Alternative and replacement fittings are available for further customization options (Cat. Nos. 2159)

Disclaimer: Use with heavy-wall/vacuum tubing. Not recommended for vacuum use with lighter weight containers. Fitting-to-socket seals will not hold vacuum after multiple autoclavings.

Nalgene Quick-Filling/Venting Closures

Cat. No.	Hose Barb I.D., in. (mm)	No. of Ports	No. per Case
2158-0021	1/4 (6.35)	2	1
2158-0022	3/8 (9.53)	2	1
2158-0031	1/4 (6.35)	3	1
2158-0032	3/8 (9.53)	3	1

► Thermo Scientific Nalgene Replacement Coupling Inserts for Quick Filling/Venting Closure polypropylene



Nalgene™ Replacement Coupling Inserts support one-handed connection and disconnection when applied to mating coupling bodies.

Male, barbed quick-disconnect replacement coupling inserts for use with Nalgene Quick Filling/Venting Closures.

details

- For use with Nalgene Quick Filling Venting Closures (Cat. No. 2158)
- Promotes fewer leakpoints and faster installations

Notes: 1/4 and 3/8 in. coupling inserts are not interchangeable.

Nalgene Replacement Coupling Inserts for Quick Filling/Venting Closure

Cat. No.	Tubing I.D., in. (mm)	No. per Case
Straight		
2159-0001	1/4 (6.35)	6
2159-0002	3/8 (9.53)	6
Elbow		
2159-0011	1/4 (6.35)	6
2159-0012	3/8 (9.53)	6

► Thermo Scientific Nalgene Filling/Venting Closures

white polypropylene, TPE gasket, TPE port caps, platinum-cured silicone tubing



Nalgene™ Filling/Venting Closures are aseptic handling solutions for pharmaceutical, biotechnology and laboratory liquid transfer applications.

Available for use with Nalgene bottles and carboys with either 53B or 83B closures, including pre-mounted lengths of platinum-cured silicone tubing for easy customization of bottles and carboys.

details

- Ready to accept additional fluid transfer components such as aseptic connectors and air vent filters
- Closures are specifically designed to mate with most Nalgene bottles and carboys
- Leakproof systems for secure, aseptic handling of high-valued products compared to pouring

Includes: Nalgene platinum-cured silicone tubing and TPE port caps.

Nalgene Filling/Venting Closures

Cat. No.	Tubing I.D., in. (mm)	Closure Size, mm	No. per Case
2162-0531	1/4 (6.35)	53	6
2162-0831	1/4 (6.35)	83	6
2162-0830	1/2 (12.7)	83	6

► Thermo Scientific Nalgene Barbed Bulkhead Fittings

polypropylene fittings, acetal nuts, silicone gaskets, TPE port caps



Nalgene™ Barbed Bulkhead Fittings promote the customization of most Nalgene bottle and carboy closures for aseptic transfer of liquids.

details

- 53B closures will accept (two) 1/4 inch fittings
- Fittings are barbed at both ends to accept tubing inside and outside the container
- Autoclavable

Includes: Instructions, drilling template and a set of two panel-mount barbed fitting, acetal nuts and silicone gaskets.

Nalgene Barbed Bulkhead Fittings

Cat. No.	Tubing I.D., in. (mm)	No. per Pack	No. per Case
6149-0001	1/4 (6.35)	2	24
6149-0002	1/2 (13)	2	24

► Thermo Scientific Nalgene Closures for InVitro Biotainer Bottles

polypropylene, silicone liner



Nalgene™ 48 mm Filling/Venting Closures are designed for aseptic handling solutions for pharmaceutical, biotechnology and laboratory liquid transfer applications.

Specifically designed to mate with Nalgene Biotainers with 48 mm closure.

details

- Ready to accept additional fluid transfer components such as aseptic connectors and vent filters
- Available in 2- and 3-ported versions
- Gamma-irradiated stabilized material
- Ports have tubulations on inside and outside of the closure for attachment of tubing

Nalgene Closures for InVitro Biotainer Bottles

Cat. No.	Description	Neck Finish	Port I.D., in. (mm)	No. per Case
2560-0489	3-ported closure	48	2-1/4 (6.35), 1-3/16 (4.76)	4
2560-0490	2-ported closure	48	2-1/4 (6.35)	4

► Thermo Scientific Nalgene Vacuum Check Valve and Positive Connector

high-density polyethylene; silicone diaphragm



Nalgene™ Vacuum Check Valves prevent back pressure with aspirator-type vacuum pumps.

Work best between 10- and 28 in. Hg. Designed for use with 1/4 in. (6.35 mm) – 5/16 in. (7.94 mm) I.D. tubing.

details

- 2-piece design, easy to disassemble for cleaning
- Includes silicone diaphragm for prevention of back pressure

Notes: Not for use with liquids.

Nalgene Vacuum Check Valve and Positive Connector

Cat. No.	Description	No. per Pack	No. per Case
6120-0010	Vacuum Check Valve for 1/4 in. (6.4 mm) to 5/16 in. (7.9 mm) I.D. Tubing	6	72

► **Thermo Scientific Nalgene T-Type Tubing Connectors**
polypropylene



Nalgene™ T-Type Tubing Connectors are molded of polypropylene resin free of animal derived components.

Non-tapered hose barbs maximize liquid flow.

details

- Double bagged to maintain cleanliness
- Autoclavable

Nalgene Tubing T-Type Connectors

Cat. No.	Fits Tubing I.D., in. (mm)	No. per Pack	No. per Case
6151-0125	1/8 (3.18)	12	72
6151-0187	3/16 (4.76)	12	72
6151-0250	1/4 (6.35)	12	72
6151-0312	5/16 (7.94)	12	72
6151-0375	3/8 (9.53)	12	48
6151-0500	1/2 (12.7)	12	48

► **Thermo Scientific Nalgene Y-Type Tubing Connectors**
polypropylene



Nalgene™ Y-Type Tubing connectors are molded of polypropylene resin free of animal derived components.

Non-tapered hose barbs maximize liquid flow.

details

- Double bagged to maintain cleanliness
- Autoclavable

Nalgene Tubing Y-Type Connectors

Cat. No.	Fits Tubing I.D., in. (mm)	No. per Pack	No. per Case
6152-0125	1/8 (3.18)	12	72
6152-0187	3/16 (4.76)	12	72
6152-0250	1/4 (6.35)	12	72
6152-0312	5/16 (7.94)	12	72
6152-0375	3/8 (9.53)	12	48
6152-0010	1/2 (12.7)	12	48

► Thermo Scientific Nalgene Pinch Clamp

polypropylene



Nalgene™ Polypropylene Pinch Clamp allows precise, one-handed regulation of fluid flow.

The molded one-piece design is ideal for use with Nalgene tubing.

details

- Polypropylene construction will not corrode or deform like metal clamps
- Pinch clamp for 1/4 in. to 7/16 in. (6.35 - 11.11 mm) O.D. tubing
- One-piece design contains no sharp edges
- Autoclavable

Nalgene Pinch Clamp

Cat. No.	Material	Fits Tubing O.D., in. (mm)	No. per Pack	No. per Case
6165-0002	Polypropylene	1/4 to 7/16 (6.35 to 11.11)	12	72

▶ Thermo Scientific Nalgene One-Way Stopcocks

polypropylene; Teflon® TFE plug



Nalgene™ Stopcocks promote accurate liquid flow control in liquid handling systems.

Ideal for use in developing in-house fluid transfer systems.

details

- Accepts 1/4 to 7/16 in. (6.35 to 11.11 mm) I.D. tubing
- One-way fluid path for accurate filling or dispensing
- Autoclavable

Teflon® is a registered trademark of DuPont used under license by Nalge Nunc International Corp.

Nalgene Stopcocks

Cat. No.	Plug Bore, mm	Fits Tubing I.D. in. (mm)	No. per Pack	No. per Case
6460-0002	2	1/4 to 5/16 (6.35 to 7.94)	1	6
6460-0004	4	1/4 to 5/16 (6.35 to 7.94)	1	6

▶ Thermo Scientific Nalgene Three-Way Stopcocks

polypropylene; Teflon® TFE plug



Nalgene™ Three-Way Stopcocks feature three tabulated ports arranged in a T shape.

Ideal for use in developing in-house fluid transfer systems.

details

- Accepts 1/4 to 7/16 in. (6.35 to 11.11 mm) I.D. tubing
- Use with any combination of two ports or all three ports
- Autoclavable

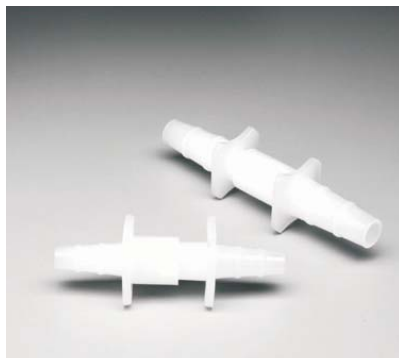
Teflon® is a registered trademark of DuPont used under license by Nalge Nunc International Corp.

Nalgene Three-way Stopcock

Cat. No.	Plug Bore, mm	Fits Tubing I.D., in. (mm)	No. per Pack	No. per Case
6470-0002	2	1/4 to 5/16 (6.35 to 7.94)	1	4
6470-0004	4	1/4 to 5/16 (6.35 to 7.94)	1	4

► Thermo Scientific Nalgene Quick Disconnects

high-density polyethylene



Nalgene™ Quick Disconnects provide a solution for rapid, smooth connections between two fluid paths.

Tubulations slide together snugly with a twist providing a fast, smooth connection.

details

- Two tapered tubulations that fit tightly together with male/female connection, allowing for rapid joining or separation of fluid paths
- Available in sizes ranging from 1/4 to 5/16 in. (6.35 to 7.94 mm) and 3/8 to 7/16 in. (9.53 to 11.11 mm) to accommodate many types of fluid transfer needs

Nalgene Quick Disconnects

Cat. No.	Fits Tubing I.D. in. (mm)	No. per Pack	No. per Case
6150-0010	1/4 to 5/16 (6.35 to 7.94)	12	72
6150-0020	3/8 to 7/16 (9.53 to 11.11)	12	72

► Thermo Scientific Nalgene Valved Quick Disconnects

polypropylene, acetal sleeve; stainless steel springs; EPR seal



Nalgene™ Quick Disconnects are ideal for use in developing in-house fluid transfer systems.

The couplings feature tubulation for attachment of tubing and an internal valve that seals when the fittings are removed, maintaining the integrity of your transfer liquids.

details

- Chemically resistant polypropylene and EPDM o-ring can be gamma irradiated
- Leakproof termination of fluid paths when uncoupled
- Design promotes one-handed operation

Nalgene Valved Barbed Quick Disconnects

Cat. No.	Fits Tubing I.D., in. (mm)	No. per Pack	No. per Case
6177-0250	1/4 (6.35)	2	12
6177-0375	3/8 (9.53)	2	12

► **Thermo Scientific Nalgene 3/4 in. Mini Hose Barb Connectors**
polypropylene



The Nalgene™ 3/4 in. Mini Hose Barb fitting allows easy connections of 3/4 in. sanitary fittings to flexible tubing.

Ideal for use in developing in-house fluid transfer systems requiring sanitary style connections.

details

- May be used in combination with 3/4 in. Mini Nalgene silicone gaskets and true-union clamps
- Autoclavable

Nalgene Mini Hose Barb Connectors

Cat. No.	Fits Tubing I.D., in. (mm)	No. per Pack	No. per Case
7210-0375	3/8 (9.53)	1	2
7210-0500	1/2 (12.7)	1	2

► **Thermo Scientific Nalgene 1 in. Sanitary Hose Barb Connector**
polypropylene



The Nalgene™ Sanitary Hose Barb fitting supports connections between 1-inch sanitary fittings to flexible tubing.

Ideal for use in developing in-house fluid transfer systems requiring sanitary style connections.

details

- May be used in combination with Nalgene 1 in. Sanitary Silicone Gaskets and true-union clamps
- Autoclavable

Nalgene 1 in. Sanitary Hose Barb

Cat. No.	Fits Tubing I.D., in. (mm)	No. per Pack	No. per Case
7211-0500	1/2 (12.7)	1	2

► Thermo Scientific Nalgene Cylindrical Tank with Cover polypropylene



Nalgene™ PP Tanks with PP cover are autoclavable and available in a variety of sizes to meet application needs.

details

- Seamless construction for easy cleaning
- Offers excellent stress-crack resistance
- Economical alternative to stainless steel tanks
- Includes matching cover that significantly reduces evaporation and contamination

Notes: All Nalgene tanks used at elevated temperatures or with high specific-gravity liquids should be externally supported.

Caution: Plastic tanks are generally subject to more severe conditions than plastic labware; exposure is constant, stresses are greater and different classes and concentrations of chemicals are involved. Please pay special attention to chemical compatibility.

Nalgene Cylindrical Tank with Cover

Cat. No.	Capacity, gal. (L)	Nominal O.D. x H, in. (cm)	No. per Case
11200-0005	5 (19)	11 x 15 (28 x 38)	1
11200-0007	7.5 (28)	12 x 18 (30 x 46)	1
11200-0010	10 (38)	13 x 20 (33 x 51)	1
11200-0015	15 (57)	14 x 28 (36 x 71)	1
11200-0030	30 (113)	18 x 30 (46 x 76)	1
11200-0055	55 (208)	22 x 36 (56 x 91)	1
11200-0100	100 (378)	28 x 44 (71 x 112)	1



► **Thermo Scientific Nalgene Lightweight Graduated Cylindrical Tank with Cover**
high-density polyethylene



Nalgene™ Lightweight Tanks are an economical solution for less rigorous applications.

details

- Seamless construction for easy cleaning
- Offers excellent stress-crack resistance
- Economical alternative to stainless steel tanks
- Includes matching cover that significantly reduces evaporation and contamination

Notes: All Nalgene tanks used at elevated temperatures or with high specific-gravity liquids should be externally supported.

Caution: Plastic tanks are generally subject to more severe conditions than plastic labware; exposure is constant, stresses are greater and different classes and concentrations of chemicals are involved. Please pay special attention to chemical compatibility.

Nalgene Lightweight Graduated Cylindrical Tank with Cover

Cat. No.	Capacity, gal. (L)	Nominal O.D. x H, in. (cm)	No. per Case
54100-0005	5 (19)	11 x 15 (28 x 38)	1
54100-0007	7.5 (28)	12 x 18 (30 x 46)	1
54100-0010	10 (38)	13 x 20 (33 x 51)	1
54100-0015	15 (57)	14 x 28 (36 x 71)	1
54100-0030	30 (113)	18 x 30 (46 x 76)	1
54100-0055	55 (208)	22 x 36 (56 x 91)	1



► Thermo Scientific Nalgene Lightweight Cylindrical Tank with Cover and Spigot high-density polyethylene



Nalgene™ Lightweight HDPE Cylindrical Tanks with installed spigots are an economical solution for less rigorous applications.

These tanks offer the same characteristics as Nalgene 54100 tank series with a spigot installed for dispensing.

details

- Seamless construction for easy cleaning
- Offers excellent stress-crack resistance
- Economical alternative to stainless steel tanks
- Includes matching cover that significantly reduces evaporation and contamination
- Equipped with Nalgene Needle Spigot (Cat. No. 96423) for dispensing

Compatible products: Nalgene Spigot for Storage Tanks (Cat. No. 6421-0010).

Notes: All Nalgene tanks used at elevated temperatures or with high specific-gravity liquids should be externally supported.

Caution: Plastic tanks are generally subject to more severe conditions than plastic labware; exposure is constant, stresses are greater and different classes and concentrations of chemicals are involved. Please pay special attention to chemical compatibility.

Nalgene Lightweight Cylindrical Tank with Cover and Spigot

Cat. No.	Capacity, gal. (L)	Nominal O.D. x H, in. (cm)	No. per Case
54102-0005	5 (19)	11 x 15 (28 x 38)	1
54102-0007	7.5 (28)	12 x 18 (30 x 46)	1
54102-0010	10 (38)	13 x 20 (33 x 51)	1
54102-0015	15 (57)	14 x 28 (36 x 71)	1
54102-0030	30 (113)	18 x 30 (46 x 76)	1
54102-0055	55 (208)	22 x 36 (56 x 91)	1

► **Thermo Scientific Nalgene Heavy Duty Cylindrical Tanks with Cover**
high-density polyethylene tanks and covers



Nalgene™ Heavy Duty HDPE Tanks with HDPE Covers are rigid, seamless tanks offered in a variety of sizes to meet your application needs.

details

- Features rigid walls for maximum strength and durability
- Molded of HDPE offering increased chemical and temperature resistance
- Includes matching cover that significantly reduces evaporation and contamination

Compatible products: Nalgene Tank Liners: Cat. No. 343050 series.

Notes: All Nalgene tanks used at elevated temperatures or with high specific-gravity liquids should be externally supported.

Caution: Plastic tanks are generally subject to more severe conditions than plastic labware; exposure is constant, stresses are greater and different classes and concentrations of chemicals are involved. Please pay special attention to chemical compatibility.

Nalgene Heavy Duty Cylindrical Tanks with Cover

Cat. No.	Capacity, gal. (L)	Nominal O.D. x H, in. (cm)	No. per Case
11100-0005	5 (19)	11 x 15 (28 x 38)	1
11100-0007	7.5 (28)	12 x 18 (32 x 46)	1
11100-0010	10 (38)	13 x 20 (33 x 51)	1
11100-0015	15 (57)	14 x 28 (36 x 71)	1
11100-0030	30 (113)	19 x 30 (48 x 76)	1
11100-0055	55 (208)	22 x 36 (56 x 91)	1
11100-0080	80 (303)	24 x 48 (61 x 122)	1
11100-0100	100 (378)	28 x 44 (71 x 112)	1
11100-0150	150 (568)	32 x 49 (81 x 124)	1
11100-0200	200 (757)	37 x 51 (94 x 130)	1

► Thermo Scientific Nalgene Heavy Duty Cylindrical Tanks with Spigot high-density polyethylene



Nalgene™ Heavy Duty HDPE Tanks with a needle-type spigot for easy dispensing.

details

- Factory-installed spigot accepts 5/8 in. I.D. tubing
- Features rigid walls for maximum strength and durability
- Seamless construction for easy cleaning
- Molded of HDPE offering increased chemical and temperature resistance
- Includes matching cover that significantly reduces evaporation and contamination

Compatible products: Nalgene Spigot for Cylindrical Tanks (Cat. No. 6421-0010).

Notes: All Nalgene tanks used at elevated temperatures or with high specific-gravity liquids should be externally supported.

Caution: Plastic tanks are generally subject to more severe conditions than plastic labware; exposure is constant, stresses are greater and different classes and concentrations of chemicals are involved. Please pay special attention to chemical compatibility.

Nalgene Heavy Duty Cylindrical Tanks with Spigot

Cat. No.	Capacity, gal. (L)	Nominal O.D. x H, in. (cm)	No. per Case
11102-0005	5 (19)	11 x 15 (28 x 38)	1
11102-0007	7.5 (28)	12 x 18 (30 x 46)	1
11102-0010	10 (38)	13 x 20 (33 x 51)	1
11102-0015	15 (57)	14 x 28 (36 x 71)	1
11102-0030	30 (113)	19 x 30 (48 x 76)	1
11102-0055	55 (208)	22 x 36 (56 x 91)	1

► **Thermo Scientific Nalgene Tank Liners**
coex polyethylene film



Nalgene™ Coex Polyethylene Film Tank Liners feature an open-bag, flat-bottom design to enhance your mixing capabilities.

Ideal for single-use, biopharmaceutical and diagnostic reagent fluid processing using rigid Nalgene cylindrical plastic tanks. Available in sizes ranging from 5 gal. to 200 gal. (19 L to 757 L).

details

- Designed specifically to fit Nalgene cylindrical tanks from 5 gal. to 200 gal. (19 L to 787 L)
- Gamma irradiated, non-cytotoxic and certified non-pyrogenic
- Coex polyethylene film is free of animal-derived components

Nalgene Tank Liners

Cat. No.	Capacity, gal (L)	Fits Nalgene Tank Cat. Nos.	No. per Pack	No. per Case
343050-0005	5 (19)	11100-0005 11200-0005 54100-0005	1	10
343050-0007	7.5 (28)	11100-0007 11200-0007 54100-0007	1	10
343050-0010	10 (38)	11100-0010 11200-0010 54100-0010	1	10
343050-0015	15 (57)	11100-0015 11200-0015 54100-0015	1	10
343050-0030	30 (113)	11100-0030 11200-0030 54100-0030	1	10
343050-0055	55 (208)	11100-0055 11200-0030 54100-0055	1	10
343050-0080	80 (303)	11100-0080	1	10
343050-0100	100 (378)	11100-0100	1	10
343050-0150	150 (568)	11100-0150	1	10
343050-0200	200 (757)	11100-0200	1	10

► Thermo Scientific Nalgene Rectangular Tank with Cover polypropylene



Nalgene™ Rectangular PP Tanks with PP Cover are autoclavable, available in a variety of sizes to meet application needs.

details

- Seamless construction for easy cleaning
- Suitable for use with many organic chemicals
- Offers excellent stress-crack resistance
- Includes matching cover that significantly reduces evaporation and contamination

Nalgene Rectangular Tank with Cover

Cat. No.	Capacity, gal. (L)	Nominal L x W x H, in. (cm)	No. per Case
14200-0002	2 (8)	8 x 8 x 9 (21 x 21 x 24)	1
14200-0005	5 (19)	10 x 10 x 14 (25 x 25 x 36)	1
14200-0010	10 (38)	12 x 12 x 14 (31 x 31 x 36)	1
14200-0015	15 (57)	18 x 13 x 14 (34 x 32 x 36)	1
14200-0020	20 (76)	18 x 13 x 20 (34 x 24 x 50)	1
14200-0045	45 (170)	24 x 18 x 20 (62 x 47 x 48)	1

► Thermo Scientific Nalgene Heavy Duty Rectangular Tank with Cover high-density polyethylene



Nalgene™ Heavy Duty HDPE Rectangular Tank with HDPE cover is a versatile, economical alternative to stainless steel tanks.

details

- Seamless construction for easy cleaning
- Stepped flange provides drip containment and grip for lifting
- Includes matching cover that significantly reduces evaporation and contamination
- Molded of HDPE offering increased chemical and temperature resistance

Notes: All Nalgene tanks used at elevated temperatures or with high specific-gravity liquids should be externally supported.

Caution: Plastic tanks are generally subject to more severe conditions than plastic labware; exposure is constant, stresses are greater and different classes and concentrations of chemicals are involved. Please pay special attention to chemical compatibility.

Nalgene Heavy Duty Rectangular Tank with Cover

Cat. No.	Capacity, gal. (L)	Nominal L x W x H, in. (cm)	No. per Case
14100-0002	2 (8)	8 x 8 x 9 (21 x 21 x 24)	1
14100-0005	5 (19)	10 x 10 x 14 (25 x 25 x 36)	1
14100-0010	10 (38)	12 x 12 x 14 (31 x 31 x 36)	1
14100-0015	15 (57)	18 x 13 x 14 (34 x 32 x 36)	1
14100-0020	20 (76)	18 x 13 x 20 (34 x 24 x 50)	1
14100-0040	40 (151)	24 x 13 x 13 (62 x 24 x 34)	1
14100-0045	45 (170)	24 x 18 x 20 (62 x 47 x 48)	1
14100-0065	65 (246)	24 x 18 x 25 (62 x 47 x 64)	1

► Thermo Scientific Nalgene Closed-Dome Tanks polypropylene



Nalgene™ Closed Dome PP Tanks with white PP closure are an excellent choice for reagent storage, aseptic mixing and dispensing.

Autoclavable and offered in a variety of sizes to meet application needs.

details

- Designed for use as a closed containment system
- Includes 150 mm gasketed screw closure, greatly reducing evaporation and contamination
- Domed bottoms offer good drainage
- Mounting flats accept bulkhead fittings up to 2 in.
- Graduated in liters and gallons

Compliance: Comply with FDA Reg. 177.1520 and USP Class VI.

Nalgene Closed-Dome Tanks

Cat. No.	Capacity, gal. (L)	Nominal O.D. x H*, in. (cm)	No. per Case
2650-0020	20 (76)	17 x 32 (42 x 79)	1
2650-0030	30 (114)	18 x 39 (47 x 99)	1
2650-0055	55 (210)	22 x 44 (57 x 112)	1
2650-0100	100 (380)	29 x 52 (72 x 132)	1

* Height measurement includes closure.

► Thermo Scientific Nalgene Closed-Dome Tank Closure with Mixer Support Assembly



Nalgene™ Closed-Dome Tank Closure with Mixed Support Assembly is for use with all sizes of Nalgene Closed-Dome Tanks.

Unique sanitary flange assembly allows overhead mixing in a closed system.

details

- 6 in. (15.2 cm) PP screw closure with a 2 in. (5.1 cm) sanitary ferrule welded in the center
- 2 in. (5.1 cm) silicone gasket and a PDVF True Union clamp
- Autoclavable
- Mixer not included

Compatible Products: Nalgene Closed-Dome Tanks (Cat. No. series 2650).

► Thermo Scientific Nalgene Spigots for Storage Tanks



Nalgene™ Spigots for Storage Tanks are used for safe and efficient liquid dispensing.

For use only with Nalgene tanks up to 100 gal. with factory installed threaded boss.

details

- Includes two PTFE o-rings that provide positive seal

Notes: Make sure container and spigot have compatible chemical resistance before installing.

Nalgene Spigots for Storage Tanks

Cat. No.	Fitting	No. per Pack	No. per Case
Polypropylene			
6421-0010	1.1/2 in. to 12 female screw thread	12	12
Low-density polyethylene			
6420-0750	19 mm NPT male thread	6	6
6420-0500	12.7 mm NPT male thread	6	6

► **Thermo Scientific Nalgene Centrifuge Bottles**
polypropylene copolymer with polypropylene closures



Nalgene™ Centrifuge Bottles are ideal for large-volume cell harvesting, pelleting and protein purification.

The perfect fit with Thermo Scientific Fiberlite carbon fiber rotors. Molded of rigid and robust polypropylene copolymer, these translucent bottles are autoclavable and have excellent chemical resistance properties.

details

- For low- to moderate-speed centrifugation of biological and chemical samples
- For proper performance, bottles must be filled to at least 80% of total capacity, except for 3120-9500 which must not be filled more than 75% of total capacity
- Polypropylene sealing caps assemblies available for 250 mL (DS3131-0038) and 1000 mL (DS3132-0063) sizes for added leakproof† assurance at higher speeds and fill volumes

Notes: When spinning 250 mL bottle in Sorvall GSA rotor, use of the Nalgene centrifuge bottle adapter (DS3125-0250) is required.

Nalgene Centrifuge Bottles

Cat. No.	Nominal Capacity, mL	Max Force, xg	No. per Pack	No. per Case
3120-0250	250	13,200†	4	36
3120-0500	500	4,800	4	24
3120-9500	500	13,700	4	24
3120-1000	1000	7,100	4	16
3120-1010‡	1000	7,100	4	16

† Up to 27,500 xg with sealing cap assembly

‡ For use with IEC rotors

► Thermo Scientific Nalgene Centrifuge Bottles with Sealing Closure

polypropylene copolymer, polypropylene closure



Nalgene™ Centrifuge Bottles are ideal for large-volume cell harvesting, pelleting and protein purification.

The perfect fit with Thermo Scientific Fiberlite carbon fiber rotors. Molded of rigid and robust PPCO, these translucent bottles are autoclavable and have excellent chemical resistance properties.

details

- For low- to moderate-speed centrifugation of biological and chemical samples
- Bottle includes PP sealing cap assembly with silicone gasket for added leakproof[†] assurance at maximum speeds or when spinning hazardous materials
- For proper performance bottles must be filled to 80% of total capacity

Notes: When spinning 250 mL bottle in a Sorvall™ GSA rotor, use of the Nalgene centrifuge bottle adapter (DS3125-0250) is required.

Nalgene Centrifuge Bottles with Sealing Closure

Cat. No.	Nominal Capacity, mL	Max Force, xg	No. per Pack	No. per Case
3141-0250	250	27,500	4	36
3141-0500	450	13,700	4	24



► **Thermo Scientific Nalgene Centrifuge Bottles**
polycarbonate with polypropylene closures



Nalgene™ Centrifuge Bottles are ideal for large-volume cell harvesting, pelleting and protein purification.

The perfect fit with Thermo Scientific Fiberlite carbon fiber rotors. Molded of transparent polycarbonate, these translucent bottles are autoclavable and have excellent mechanical strength properties.

details

- For low-speed centrifugation of biological and chemical samples
- Molded of translucent polycarbonate for easy visualization of samples
- For added leakproof[†] assurance at maximum speeds or when spinning hazardous materials, use with PP sealing caps assemblies; available for 250 mL (Cat. No. DS3131-0038) and 1000 mL (Cat. No. DS3132-0063) sizes
- For proper performance, bottles must be filled to at least 80% of total capacity

Notes: When spinning 250 mL bottle in Sorvall GSA rotor, use of the Nalgene centrifuge bottle adapter (Cat. No. DS3125-0250) is required.

Nalgene Centrifuge Bottles

Cat. No.	Nominal Capacity, mL	Max Force, xg	No. per Pack	No. per Case
3122-0250	250	27,500	4	36
3122-0500	500	13,700	4	24
3122-1000	1000	7100	4	16
3122-1010	1000	7100	4	16



► Thermo Scientific Nalgene Centrifuge Bottles with Sealing Closure

polycarbonate with polypropylene closures



Nalgene™ Centrifuge Bottles are ideal for large-volume cell harvesting, pelleting and protein purification.

The perfect fit with Thermo Scientific Fiberlite carbon fiber rotors. Molded of transparent PC, these translucent bottles are autoclavable and have excellent mechanical strength properties.

details

- For low- to moderate-speed centrifugation of biological and chemical samples
- Molded clear PC for easy visualization of samples
- PP sealing cap closure with silicone gasket, for added leakproof[†] assurance at maximum speeds or when spinning hazardous materials
- For proper performance bottles must be filled to 80% of total capacity

Notes: When spinning 250 mL bottle in a Sorvall™ GSA rotor, use of the Nalgene centrifuge bottle adapter (DS3125-0250) is required.

Nalgene Centrifuge Bottles with Sealing Closure

Cat. No.	Nominal Capacity, mL	Max Force, xg	No. per Pack	No. per Case
3140-0250	250	27,500	4	36
3140-0500	450	13,700	4	24



▶ Thermo Scientific Nalgene Teflon® FEP Centrifuge Bottle

Teflon® fluorinated ethylene-propylene, Tefzel™ ethylene-tetrafluoroethylene closure



Nalgene™ Teflon® FEP Centrifuge Bottles are ideal for low-speed, lipid and phenol extractions, digestions and precipitations.

The perfect fit with Thermo Scientific Fiberlite carbon fiber rotors. Molded of autoclavable, translucent FEP, these bottles resist most acids, bases and organic solvents.

details

- Use in temperatures from -100°C to +150°C
- FEP provides excellent chemical resistance, ideal for large-volume extraction, digestion and precipitation procedures requiring the use of aggressive chemicals
- For proper performance, must be filled to 100% of total capacity
- For added leakproof† assurance at maximum speeds or when spinning hazardous materials use with PP sealing caps assemblies (DS3131-0038)

Notes: When spinning 250 mL bottle in a Sorvall™ GSA rotor, use of the Nalgene centrifuge bottle adapter (Cat. No. DS3125-0250) is required.

Teflon® is a registered trademark of DuPont used under license by Nalge Nunc International Corp.

Nalgene Teflon® FEP Centrifuge Bottle

Cat. No.	Nominal Capacity, mL	Max Force, xg	No. per Pack	No. per Case
3127-0250	250	4,000	1	6

▶ Thermo Scientific Nalgene Centrifuge Bottles

high-density polyethylene with polypropylene closures



Nalgene™ Centrifuge Bottles are ideal for large-volume cell harvesting, pelleting and protein purification requiring refrigerated temperatures.

The perfect fit with Thermo Scientific Fiberlite carbon fiber rotors. Molded of rigid and robust HDPE, these translucent bottles have excellent chemical resistance properties and are rated for temperatures as low as -100°C.

details

- For low-speed centrifugation of biological and chemical samples
- Excellent for use in refrigerated centrifuges
- Rated for use in temperatures as low as -100°C
- Rated for forces up to 8,000 ×g
- For proper performance bottles, must be filled to at least 80% of total capacity

Notes: When spinning 250 mL bottle in a Sorvall™ GSA rotor, use of the Nalgene centrifuge bottle adapter (Cat. No. DS3125-0250) is required

Nalgene Centrifuge Bottles

Cat. No.	Nominal Capacity, mL	Max Force, xg	No. per Pack	No. per Case
3121-0250	250	8,000	6	36

► Thermo Scientific Nalgene Centrifuge Bottle Adapter

low density polyethylene



Nalgene™ Centrifuge Bottle Adapter provides support to all Nalgene 250 mL bottles for proper fit in Sorvall GSA rotors.

details

- Molded of white, low-density polyethylene
- For use with Nalgene centrifuge bottles: Cat. Nos. 3120-0250, 3121-0250, 3127-0250, 3140-0250 and 3141-0250

Nalgene Centrifuge Bottle Adapter

Cat. No.	Description	No. per Pack	No. per Case
DS3125-0250	Centrifuge Bottle Adapter for 250 bottles	6	6

► Thermo Scientific Nalgene Sealing Cap Assembly

polypropylene closure with silicone gasket



Nalgene™ Sealing Cap Assemblies ensure leakproof service of Nalgene centrifuge bottles at their recommended maximum rated speeds.

details

- PP closures with silicone gasket
- Recommended for use when spinning hazardous materials

Nalgene Sealing Cap Assembly

Cat. No.	Closure Size, mm	Fits Cat. No.	No. per Case
DS3132-0058	58	3140-0250, 3141-0250	2
DS3132-0063	63	3120-1000, 3120-1010, 3122-1000, 3122-1010, 3140-0500, 3141-0500	2

▶ Thermo Scientific Nalgene Spherical-Bottom Centrifuge Bottle

polycarbonate, polypropylene closure



Nalgene™ Spherical-Bottom Centrifuge Bottles are ideal for large-volume cell harvesting, pelleting and protein purification.

The perfect fit with Thermo Scientific Fiberlite carbon fiber rotors. Molded of transparent PC, these translucent bottles are autoclavable and have excellent mechanical strength properties.

details

- For low- to moderate-speed centrifugation of biological and chemical samples
- Molded of transparent PC for easy visualization of samples
- Spherical-bottom design facilitates pellet formation and retrieval
- For proper performance, bottles must be filled to 80% of the total capacity

Notes: For use in standard rotors, the use of the Nalgene spherical-bottom adaptor Cat. No. DS3124-0010 is recommended.

Nalgene Spherical-Bottom Centrifuge Bottle

Cat. No.	Nominal Capacity, mL	Max Force, xg	No. per Pack	No. per Case
3123-0250	250	27,500	4	36

▶ Thermo Scientific Nalgene Spherical-Bottom Centrifuge Bottle Adapter

polycarbonate



Nalgene™ Spherical-Bottom Centrifuge Bottle Adapter is specifically designed to mate with Cat. No. 3123-0250 for use in standard centrifuge rotors.

details

- Molded of rigid and robust white polycarbonate for assured durability.
- Total height of Nalgene spherical-bottom centrifuge bottle with closure and adapter is 137.5 mm

Nalgene Spherical-Bottom Centrifuge Bottle Adapter

Cat. No.	Description	No. per Pack	No. per Case
DS3124-0010	Spherical-Bottom Centrifuge Bottle Adaptor	4	4

► Thermo Scientific Nalgene Conical-Bottom Centrifuge Bottle

polypropylene copolymer, polypropylene sealing closure



Nalgene™ Conical-Bottom Centrifuge Bottles are designed for pelleting applications such as cell culture harvesting and protein biochemistry, including ammonium sulfate precipitations.

Molded of rigid and robust PPCO, these translucent bottles are autoclavable and have excellent chemical resistance properties.

details

- For low- to moderate-speed centrifugation of biological and chemical samples
- Bottle includes PP sealing cap assembly with silicone gasket for added leakproof assurance at maximum speeds or when spinning hazardous materials
- Proper performance requires that bottles must be filled to 80% of the total capacity
- Autoclavable, graduated, leakproof[†]

Requires: Must be used with Nalgene adapter for conical-bottom centrifuge bottles (Cat. No. DS3126-0175).

Nalgene Conical-Bottom Centrifuge Bottle

Cat. No.	Nominal Capacity, mL	Max Force, xg	No. per Pack	No. per Case
3143-0175	175	27,500	4	36

► Thermo Scientific Nalgene Conical-Bottom Centrifuge Bottle

polycarbonate, polypropylene sealing closure



Nalgene™ Conical-Bottom Centrifuge bottles are designed for pelleting applications such as cell culture harvesting and protein biochemistry, including ammonium sulfate precipitations.

Molded of transparent polycarbonate, these transparent bottles are autoclavable and offer excellent mechanical strength.

details

- For low- to moderate-speed centrifugation of biological and chemical samples
- Bottle includes PP sealing cap assembly with silicone gasket for added leakproof assurance at maximum speeds or when spinning hazardous materials
- For proper performance bottles must be filled to 80% of total capacity
- Autoclavable, transparent, leakproof[†], with molded-in graduations

Requires: Must be used with Nalgene adapter for conical-bottom centrifuge bottles (Cat. No. DS3126-0175).

Nalgene Conical-Bottom Centrifuge Bottle

Cat. No.	Nominal Capacity, mL	Max Force, xg	No. per Pack	No. per Case
3144-0175	175	27,500	4	36

▶ Thermo Scientific Nalgene Conical-Bottom Centrifuge Bottle

polystyrene, high-density polyethylene closure



Nalgene™ Sterile Conical-Bottom Centrifuge Bottles are an economical and disposable solution for low-speed, large-volume cell harvesting, pelleting and protein purification.

The perfect fit with Thermo Scientific Fiberlite carbon fiber rotors. Molded of PS, these translucent bottles are individually wrapped and ready to use.

Well suited for sterile cell culture applications. Designed for use in low-speed refrigerated or non-refrigerated centrifuges up to 5800 xg.

details

- Molded of transparent PS for easy visualization of samples
- Well suited for sterile cell culture applications
- Designed for use in low-speed refrigerated or non-refrigerated centrifuges up to 5800 xg
- Gamma-radiation sterilized, individually wrapped and ready to use
- Molded-in graduations to assist with volume measurements
- For proper performance, bottles must be filled to at least 80% of total capacity

Requires: Must be used with Nalgene adapter for conical-bottom centrifuge bottles (DS3126-0175).

Nalgene Conical-Bottom Centrifuge Bottle

Cat. No.	Nominal Capacity, mL	Max Force, xg	No. per Pack	No. per Case
3145-0175	175	5800	12	48

▶ Thermo Scientific Nalgene Conical-Bottom Centrifuge Bottle Adapter

polycarbonate



Nalgene™ Conical-Bottom Bottle Adapter is designed for use with Cat. Nos. 3143, 3144, and 3145.

details

- Molded of rigid, robust white PC for assured durability
- Centrifugation of Nalgene Conical Bottom Centrifuge Bottles (Cat. Nos. 3143, 3144, 3145) requires this adapter

Nalgene Conical-Bottom Centrifuge Bottle Adapter

Cat. No.	Description	No. per Pack	No. per Case
DS3126-0175	Conical Bottom Centrifuge Bottle Adapter	4	4

► **Thermo Scientific Nalgene 1 L Super Speed Centrifuge Bottles with Sealing Closure**



Nalgene™ 1 L Super Speed Centrifuge Bottles with Sealing Closure are designed to boost productivity and pellet recovery in high-speed, large-volume gross separation applications.

The perfect fit to Fiberlite™ carbon fiber rotors. Molded of transparent PC and PPCO, these bottles are autoclavable and have excellent mechanical strength properties.

details

- Process a full liter in each bottle at speeds up to 15,810 xg
- Smooth inner walls reduces sheering in mammalian culture separations
- Ideal for bacterial, yeast tissue isolations and viral harvesting
- Choose PC for excellent clarity and mechanical strength
- Choose PPCO copolymer for excellent chemical resistance
- Designed to fit FiberLite™ F6S 6 x 1000Y, F8S 6 x 1000Y, and F9S 4 x 1000Y carbon fiber rotors
- Recommended operating temperature range 4° to 22°C; storage to -70°C
- Includes 3-piece sealing cap assembly, PP plug, closure and silicone gasket for added leakproof[†] assurance
- USP Class VI compliant, non-cytotoxic, autoclavable

Nalgene 1 L Super Speed Centrifuge Bottles with Sealing Closure

Cat. No.	Material	Max Force, xg	No. per Pack	No. per Case
3140-1006	Polycarbonate	15,810	6	6
3141-1006	Polypropylene copolymer	15,810	6	6



► Thermo Scientific Nalgene 2 L Bio Bottle with Sealing Closure

polypropylene copolymer, polypropylene closure with silicone gasket



Nalgene™ 2 L Bio Bottle offers a solution for the separation of large-volume harvests in a single run.®

Designed for use in Thermo Scientific RC12BP Plus Centrifuges and H-12000 Swing Bucket Rotors, an exact fit ensures optimal performance. Ideal for bacterial, yeast and tissue isolations.

details

- Process up to 12 L in a single run at speeds up to 7333 xg
- Graduated, wide-mouth design simplifies decanting, re-suspensions and pellet removal
- Conical shape and smooth inner surface assures compact pellet formation
- For centrifugation operating temperatures from 4°C to 22°C and storage to 0°C
- The use of support bridge (Cat. No. 75007686) is required
- 2 L Bio Bottles must be filled to at least 80% of the total capacity for optimal performance

Includes: White PP sealing screw closure with silicone gasket for leakproof[†] assurance.

Compliance: Meets USP VI, non-cytotoxic, non-hemolytic.

Nalgene 2 L Bio Bottle with Sealing Closure

Cat. No.	Description	Max Force, xg	No. per Pack	No. per Case
3120-2006	2 L Bio Bottle, non-sterile	7333	6	6
3120-2024	2 L Bio Bottle, sterile	7333	1	24

► Thermo Scientific Nalgene Bottle Low & High Speed Selector Guide

Nomical Volume	Cat. No.	Nominal Vol., mL	Description	Nom. Dim. Dia. x H., mm	Material	Maximum RCF (xg)		Closure Size (mm)	Closure Options Cat. No.
						4°C	22°C		
175 mL	3143-0175	175	Conical wide-mouth bottle, sealing cap	61.8 x 139.4	PPCO	27,500	27,500	58	DS3132-0058
175 mL	3144-0175	175	Conical wide-mouth bottle, sealing cap	61.8 x 140.5	PC	27,500	27,500	58	DS3132-0058
175 mL	3145-0175	175	Conical wide-mouth bottle, screw top, sterile	61.5 x 135.6	PS	5800	5,800	53	712150-0530
250 mL	3120-0250	250	Bottle, screw top	61.8 x 125.2	PPCO	13,200†	13,200†	38	DS3131-0038
250 mL	3122-0250	250	Bottle, screw top	61.8 x 125.2	PC	27,500	27,500	38	DS3131-0038
250 mL	3121-0250	250	Bottle wide-mouth, screw top	61.2 x 131.6	HDPE	8000	8000	43	712150-0430
250 mL	3123-0250	250	Spherical bottom bottle, screw top	61.8 x 140.0	PC	27,500	27,500	38	DS3131-0038
250 mL	3127-0250	250	Bottle, screw top	59.9 x 126.5	FEP	4000	NR	38	DS3131-0038
250 mL	3140-0250	250	Bottle wide-mouth, sealing cap	61.8 x 134.4	PC	27,500	27,500	58	DS3132-0058
250 mL	3141-0250	250	Bottle wide-mouth, sealing cap	61.1 x 132.8	PPCO	27,500	27,500	58	DS3132-0058
500 mL	3140-0500	450	Bottle wide-mouth, sealing cap	69.5 x 159.5	PC	24,336	24,336	63	DS3132-0063
500 mL	3141-0500	450	Bottle wide-mouth, sealing cap	69.5 x 159.3	PPCO	24,336	24,336	63	DS3132-0063
500 mL	3120-0500	500	Bottle, screw top	73.8 x 168.9	PPCO	4800	4800	48	
500 mL	3120-9500	500	Bottle, screw top	69.5 x 168.9	PPCO	13,700	13,700	48	
500 mL	3122-0500	500	Bottle, screw top	69.5 x 168.9	PC	13,700	13,700	48	
1000 mL	3120-1000	1000	Bottle, screw top	98.0 x 174.2	PPCO	7100	7100	63	DS3132-0063; 712150-0630
1000 mL	3122-1000	1000	Bottle, screw top	98.1 x 177.0	PC	7100	7100	63	DS3132-0063; 712150-0630
1000 mL	3140-1006	1000	Bottle, sealing cap	97.5 x 195.3	PC	15,810	15,810	84.5	DS3132-BLUE
1000 mL	3141-1006	1000	Bottle, sealing cap	97.5 x 195.3	PPCO	15,810	15,810	84.5	
1000 mL	3120-1010	1000	Bottle, screw top (IEC)	98.0 x 168.4	PPCO	7100	7100	63	DS3132-0063; 712150-0630
1000 mL	3122-1010	1000	Bottle, screw top (IEC)	98.1 x 189.7	PC	7,100	7,100	63	DS3132-0063; 712150-0630
2000 mL	3120-2006	2000	2 L BioBottle, sealing cap	175.5 x 111.5 x 209.3	PPCO	7,333	7,333	63	DS3132-0063
2000 mL	3120-2024	2000	2 L BioBottle, screw top, sterile	175.5 x 111.5 x 200.2	PPCO	7,333	7,333	63	DS3132-0063; 712150-0630

† Up to 27,500 xg with sealing cap assembly